
NEIGHBORHOOD PARK



A-E

ALASKA STREET PARK **BREC NEIGHBORHOOD PARK**

DESCRIPTION

Alaska Street Park is located near the entrance of LSU, off Nicholson Drive, just north of the campus. The facility includes a recreation center, a playground, and a lighted ball diamond. In 2008, the playground was completely rebuilt with

play equipment generosity donated by Renaissance Village in the City of Baker. Improvements include a playground with safety surfacing, new connecting sidewalks, benches, fencing, landscaping, and a refurbished ball field and basketball court.



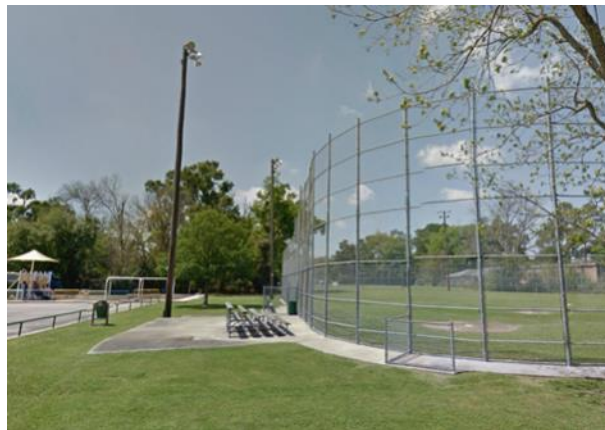
PROJECT DATE

2008 Playground Improvements

PROJECT COST

\$110,000 Site Improvements

ALASKA STREET PARK



ALSEN PARK

BREC NEIGHBORHOOD PARK

DESCRIPTION

Alsen Park improvements include a new asphalt park lot and driveway with accessible parking spots and a drop-off zone for the recreation center. Other park amenities include a playground with wood

mulch safety surfacing, picnic areas, tennis courts, two ball fields, and just over half of a mile hard surface walking loop. Minor improvements were made to the recreation center.

PROJECT DATE

2010 Asphalt Parking Lot & Driveway
& Miscellaneous Site Improvements

PROJECT COST

\$92,000 Asphalt Parking Lot & Driveway

ALSEN PARK



ANTIOCH BOULEVARD PARK **BREC NEIGHBORHOOD PARK**

DESCRIPTION

Antioch Park is located in the Shenandoah area, off Tiger Bend Road. Improvements to Antioch Neighborhood Park include a new playground with a 2-5 year old unit, a climbing unit and swings. The park also has new walks, benches, trash receptacles and a shelter strategically placed for your convenience. Improvements were made to the baseball field the tennis court

was refurbished and two basketball half courts have been added. A pedestrian bridge added and another refurbished. The existing parking lot was reconfigured to improve circulation and then asphalted. Further amenities in the park include connecting park pathways to local subdivisions, decorative fencing, landscaping and new park signage.

ANTIOCH BOULEVARD PARK

PROJECT DATE

- 2010-2011 Site Improvements
- 2011 Recreation Center Roof Improvements

PROJECT COST

- \$5000 Master Plan
- \$20,000 Preliminary Site Work Phase
- \$343,000 Site Improvements
- \$176,000 Roof Improvements



BAKER PARK **BREC NEIGHBORHOOD PARK**



DESCRIPTION

Baker Park improvements include a new playground with improved drainage and new connecting walks. Accessible parking was installed with walks connecting to the ball fields and playground area.

The ball field backstop and concession building were also renovated.

PROJECT DATE

2009 Site Improvements

PROJECT COST

\$80,000 Ball Field and Playground Improvements

BAKER PARK



BAKER PLAYGROUND **BREC NEIGHBORHOOD PARK**



DESCRIPTION

The Baker Playground is located near Baker City Hall. This was a cooperative project involving the City of Baker, BREC, Rotary groups, and foundations from around the United States, led by the Baton Rouge Rotary. Kids Around the World donated the play-

ground equipment. Rosie's Kids Foundation, The Credit Union of Baton Rouge, and several other groups also raised money for the project. Then in 2010 new stretching equipment was installed near the playground along the crushed stone walking path.

BAKER PLAYGROUND

PROJECT DATE

- 2006 New Playground
- 2010 New Stretching Equipment

PROJECT COST

- \$50,000 Site Improvements (BREC Portion)
- \$16,000 Stretching Equipment (BREC Portion)



BAKER RECREATION CENTER

BREC NEIGHBORHOOD PARK

DESCRIPTION

Baker Recreation Center renovations include removal of the existing metal roof and replacing with new metal roof. Removal of interior insulation and painting of existing metal structure and activity

rooms. Also, Life Trails stretching equipment was installed near the Recreation Center and Council On Aging Baker Center in 2011 to provide a place for seniors to be active and stay fit.

PROJECT DATE

- 2011 Install Life Trails Equipment
- 2011 Roof Replacement
- 2014 Floor Abatement & Resurfacing

PROJECT COST

- \$17,500 Life Trails Equipment
- \$180,000 Renovations and Roof Replacement
- \$27,900 Floor Abatement & Resurfacing



BAKER RECREATION CENTER



BARINGER ROAD PARK **BREC NEIGHBORHOOD PARK**



DESCRIPTION

Baringer Road Park improvements include a renovated recreation center with updated restrooms, storage, new multi-purpose room and flooring throughout. The park was redesigned with new parking areas, a new 1/3 of a mile walking loop, new play-

ground, new concrete surfaced tennis courts with two basketball goals, site drainage, new benches, grills, trash cans, a drinking fountain, a relocated picnic shelter, refurbished ball field and multi-use field, landscaping and park signage.

PROJECT DATE

- 10/21/2010 1st Public Meeting
- 01/20/2011 2nd Public Meeting
- November 2011 Site Improvements Complete

PROJECT COST

- \$90,000 Recreation Center Improvements
- \$380,000 Park improvements



BARINGER ROAD PARK



BARINGER ROAD PARK

BREC NEIGHBORHOOD PARK

PROJECT SITE PLAN



**PROPOSED MASTER PLAN
BARINGER NEIGHBORHOOD PARK**

BREC Planning & Engineering
January 20, 2011



BARINGER ROAD PARK

BREC NEIGHBORHOOD PARK

PROJECT PHOTOS



Recreation Center Prior to Improvements



Newly Painted Center & Improved Parking Area

BARINGER ROAD PARK



Old Playground



New Playground & Walks



Tennis Courts Prior to Improvements



Completely Refurbished Tennis Courts



BEAVER CREEK PARK BREC NEIGHBORHOOD PARK

DESCRIPTION

Construction on this portion of the park, which is located near the park's entrance, began in May 2010. The new neighborhood playground contains play structures for children ages 2-12 years old.

Other additions include concrete walking paths, a tennis court, a half basketball court, a picnic shelter, site furniture, decorative fencing, and landscaping.

PROJECT DATE

2010 Site Improvements

PROJECT COST

\$241,000 New Playground and Amenities



BEAVER CREEK PARK



BEAVER CREEK PARK

BREC NEIGHBORHOOD PARK

PROJECT SITE PLAN



BELFAIR PARK

BREC NEIGHBORHOOD PARK

DESCRIPTION

Belfair Park facilities include a recreation center, a playground area, and a multi-use court. The recreation center was renovated and repurposed to serve as the Belfair Teen Center. Newly developed classes such as Drum Corp, Hip Hop Dance, Modern

Dance and Film Making are offered at the renovated teen location which is dedicated to the teens throughout East Baton Rouge Parish. Approximately 120 teens use the center each week.

PROJECT DATE

2007 Belfair Teen Center Renovations

PROJECT COST

\$90,000 Site Improvements

BELFAIR PARK



BEN BURGE PARK **BREC NEIGHBORHOOD PARK**



DESCRIPTION

Improvements to Ben Burge Neighborhood Park, formerly Elvin Drive Park, include a new playground with safety surfacing, connecting sidewalks, a picnic shelter with tables, cooking grill, new benches, and

water fountain. The playground unit for ages 2-5 was donated by the Children's Plaza at Renaissance Village in Baker. Additional playground components have also been included.

PROJECT DATE

- 01/24/2007 Public Planning Meeting
- 2009 Renovations Complete

PROJECT COST

\$110,000 New Playground & Other Site Improvements

BEN BURGE PARK



Before Improvements



New Playground & Other Site Improvements



BLUEBERRY STREET PARK

BREC NEIGHBORHOOD PARK

DESCRIPTION

Blueberry Street Park recreation center improvements include additional exterior security lighting around and rooms inside the center were repurposed for better functionality. A new entry and hall-

way were constructed at the recreation center. Additional improvements to the site include a renovated shelter, new picnic tables and benches and improved site drainage.

PROJECT DATE

2012 Renovations Complete

PROJECT COST

\$22,500 Recreation Center & Site Improvements

BLUEBERRY STREET PARK



BROOKFIELD PARK **BREC NEIGHBORHOOD PARK**



DESCRIPTION

Improvements to Brookfield Park include a new picnic shelter next to the playground, tennis court improvements and site drainage.

PROJECT DATE

2013 Renovations Complete

PROJECT COST

\$35,000 Site Improvements

BROOKFIELD PARK



BROWN HEIGHTS PARK **BREC NEIGHBORHOOD PARK**

DESCRIPTION

Brown Heights Park improvements include repairs to the tennis court and backstop fencing, additional signage, and new picnic table. The accessible parking

space was striped and new volleyball post installed.



PROJECT DATE

2012 Renovations Complete

PROJECT COST

\$5000 Site Improvements

BROWN HEIGHTS PARK



CADILLAC STREET PARK **BREC NEIGHBORHOOD PARK**



DESCRIPTION

Cadillac Street Park is located in the Zion City area. Residents have access to a recreation center, a new playground, multi-use court, picnic facilities, and a ball diamond. Improvements to the

site were completed in 2013 and include new walking loop, new playground, with seating and the recreation center interior was freshly painted.

PROJECT DATE

2013 Renovations Complete

PROJECT COST

\$100,000 Site Improvements

CADILLAC STREET PARK



CADILLAC STREET PARK

BREC NEIGHBORHOOD PARK

PROJECT PHOTOS



CADILLAC STREET PARK



CAMELOT PARK

BREC NEIGHBORHOOD PARK



DESCRIPTION

Site improvements to Camelot Park include a new playground with wood fiber safety surfacing and new accessible walks.

PROJECT DATE

2013 New Playground

PROJECT COST

\$40,000 Site Improvements

CAMELOT PARK



CEDAR RIDGE DRIVE PARK **BREC NEIGHBORHOOD PARK**



DESCRIPTION

Cedar Ridge Park underwent a master planning process for park renovations. Conceptual plans were presented at a Public Planning Meeting on May 21, 2012, and the public decided what they wanted to see. In

2013, the first phase of the new master plan was constructed. Park renovations in the first phase include a new playground with connecting walks, improved picnic areas and newly paved parking.

PROJECT DATE

- May, 2012 Public Meeting
- 2013 Site Improvements

PROJECT COST

- \$170,000 Site Improvements

CEDAR RIDGE DRIVE PARK



CEDAR RIDGE DRIVE PARK

BREC NEIGHBORHOOD PARK

PROJECT SITE PLAN

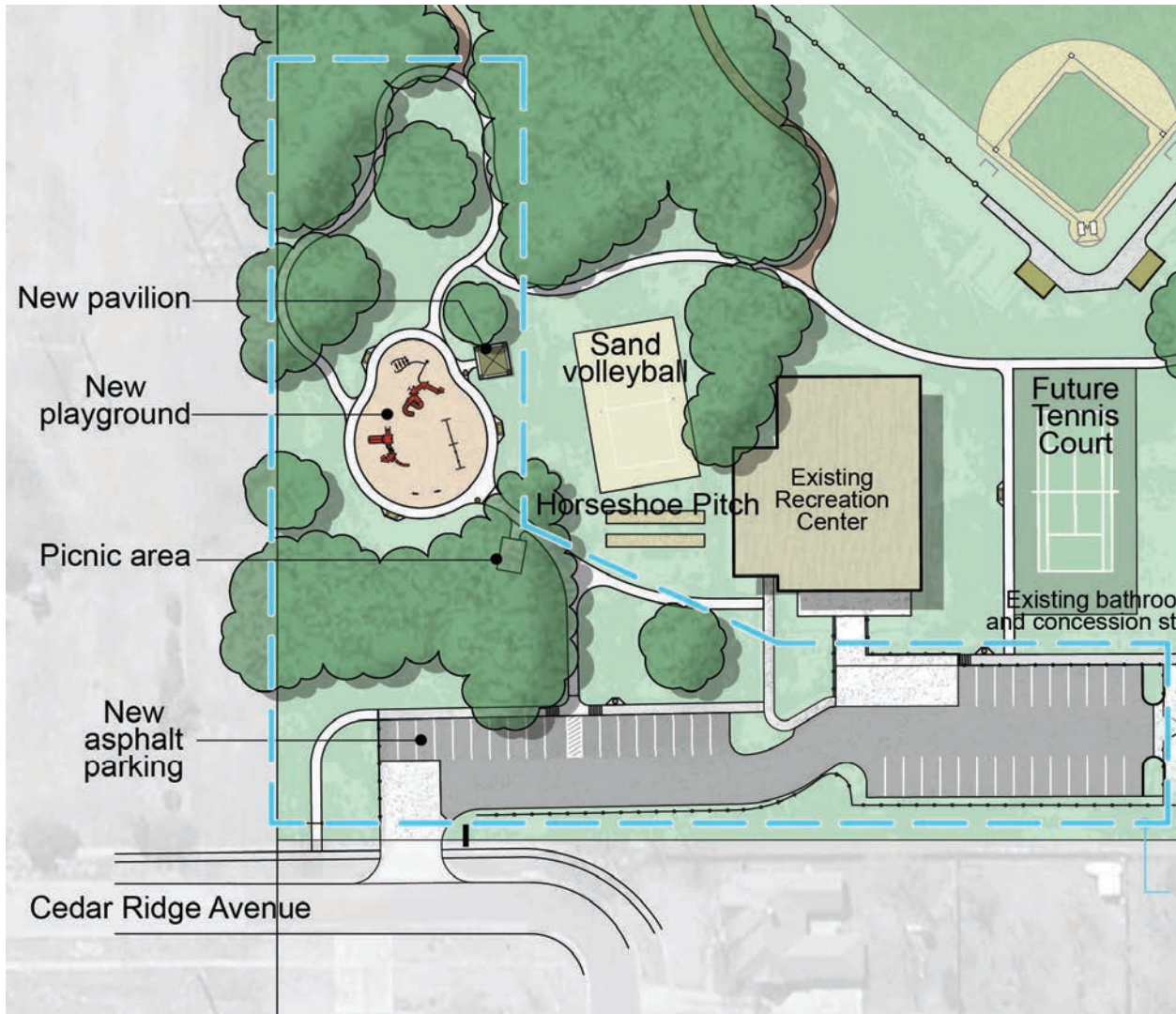


CEDAR RIDGE DRIVE PARK

Overall Master Plan



PROJECT SITE PLAN



CEDAR RIDGE DRIVE PARK

Phase 1 Site Plan



CEDARCREST PARK **BREC NEIGHBORHOOD PARK**



DESCRIPTION

This neighborhood park is located in the Cedarcrest subdivision, off of Old Hammond Highway. Facilities include a playground area, tennis court, a half basketball court, a picnic area, and a ball field. The Louisiana Art and Artists Guild uses the facility

for their arts programming. Renovations to Cedarcrest Neighborhood Park are underway and include improved playground drainage, ADA accessible parking, new connector paths to picnic areas and recreation center improvements.

PROJECT DATE

December 2013 Construction Underway

PROJECT COST

\$55,000 Site Improvements

CEDARCREST PARK



Recreation Center Prior to Improvements



Refurbished Center



ADA Parking Prior to Improvements



New ADA Parking & Signage



CHURCH STREET PARK **BREC NEIGHBORHOOD PARK**

DESCRIPTION

This neighborhood park is located in the City of Zachary. The park featured a small skate park from 2007 to 2010 until a permanent one was built at Zachary Community Park. Amenities featured at the park include a playground, picnic pavilion, lighted baseball field,

recreation center with indoor basketball and adult leisure programming. In 2010 the gym floor was replaced with a new synthetic floor due to flooding in 2009 and renovations were also completed to the activity room, entry foyer, and restrooms.



CHURCH STREET PARK

PROJECT DATE

2009 Recreation Center Renovations

PROJECT COST

\$35,000 Basketball/ Multi-use Courts

\$85,000 Recreation Center Renovations



Old Gym Floor



New Gym Floor



Seating Area



New Basketball Court



CLIFFORD T. SEYMOUR, SR. PARK

BREC NEIGHBORHOOD PARK

DESCRIPTION

Clifford T. Seymour, Sr. Park improvements include a new full basketball court, bleacher, benches, and picnic tables.

PROJECT DATE

2012 Site Improvements

PROJECT COST

\$25,000 Site & Basketball Court Renovations

CLIFFORD T. SEYMOUR, SR. PARK



COLLEGE TOWN PARK

BREC NEIGHBORHOOD PARK

DESCRIPTION

College Town Park underwent a master planning process for park renovations. BREC worked in collaboration with the local neighborhood association to facilitate ideas on ways to improve the park that best serves area residents. After a series of meetings with the

neighborhood leaders a master plan was developed and represents the phased implementation of new and improved park amenities including new walkways, a new playground, a picnic shelter, improved drainage, and other site furnishings.

PROJECT DATE

- April 2010 Park Planning Meeting & 1st Citizen Survey
- August 2011 2nd Citizen Survey
- 2012 Construction Drawings
- 2013 Construction Complete

PROJECT COST

- \$5,000 Design
- \$160,000 Site Improvements

COLLEGE TOWN PARK



COLLEGE TOWN PARK BREC NEIGHBORHOOD PARK

PROJECT SITE PLAN



College Town Neighborhood Park: Phased Master Plan
 Recreation and Park Commission of East Baton Rouge Parish
 BREC Planning and Engineering
 2012



COLLEGE TOWN PARK

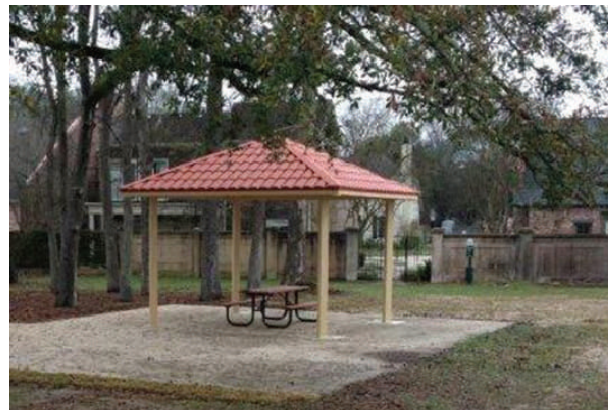
COLLEGE TOWN PARK

BREC NEIGHBORHOOD PARK

PROJECT PHOTOS



COLLEGE TOWN PARK



CONGRESS PARK **BREC NEIGHBORHOOD PARK**



DESCRIPTION

This 2.5-acre neighborhood park offers local residents a 1/5 mile walking loop, a picnic shelter with tables and an expansive open play area. The grand opening of the Congress Neighborhood Park was August 2, 2005.

PROJECT DATE

2005 Construction Complete

PROJECT COST

\$75,000 Design & Construction

CONGRESS PARK



CONVENTION STREET PARK **BREC NEIGHBORHOOD PARK**



DESCRIPTION

Convention Street Park sits on a three-quarter acre lot which was formerly the site of the Continental Trailways bus terminal that later became an annex facility for the downtown postal complex. The park underwent a master planning process that consisted of a public meeting during which BREC presented two conceptual plans and provided public input surveys to collect information about the needs and wants of the community.

The final master plan reflects the combined information. Park enhancements include a large passive open space defined by a radial promenade. The pathway terminates with a focal point of public art surrounded by an intimately scaled neighborhood perennial garden. It also features an arcing seat wall to provide seating or an area for outdoor performances.

CONVENTION STREET PARK

PROJECT DATE

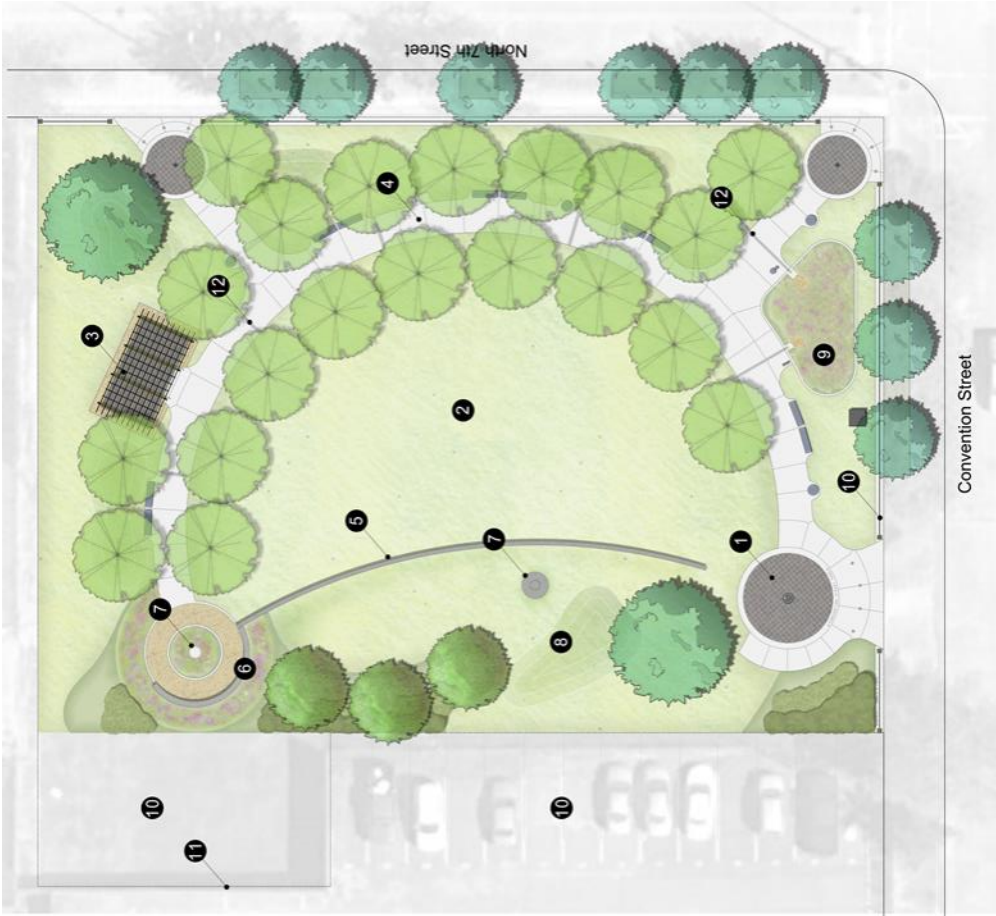
- 2008 Demolition of Existing Buildings
- 2012 Construction of Park

PROJECT COST

\$260,000 New Park Construction Project



PROJECT SITE PLAN



CONVENTION STREET PARK

Convention Street Park
717 Convention Street

- 1 Main Entry Plaza
- 2 Multi-Use Lawn
- 3 Pergola and Terrace
- 4 Promenade
- 5 Retaining Wall
- 6 Perennial Garden and Seat Wall
- 7 Sculpture Pads
- 8 Grass Berms
- 9 Rain Garden
- 10 Future Mixed Use Development
- 11 Temporary Vinyl Mural
- 12 Decorative Trench Grates and Pavement Patterns
- 13 3' Garden Fence



CONVENTION STREET PARK

BREC NEIGHBORHOOD PARK

PROJECT PHOTOS



CONVENTION STREET PARK



CORPORATE PARKWAY PARK

BREC NEIGHBORHOOD PARK

DESCRIPTION

Corporate Parkway Park provides .14 mile of walking trails for area residents in Old South Baton Rouge. Renovations to the park include improved site drainage and grading in areas prone to

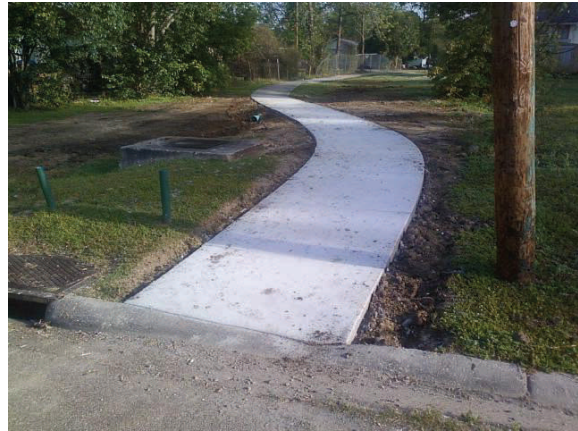
holding water. Also sections of uneven concrete along the trail was replaced.

PROJECT DATE

2013 Renovations Complete

PROJECT COST

\$9,000 Walking Path Improvements



CORPORATE PARKWAY PARK



CUNARD AVENUE PARK **BREC NEIGHBORHOOD PARK**



DESCRIPTION

Site Improvements to Cunard Avenue Park include new park signage, a new shelter with picnic tables, a refurbished basketball court and new pipe rail and maintenance gate.

PROJECT DATE

- 2010 Site Improvements
- 2012 Refurbished Basketball Court

PROJECT COST

\$30,000 Site Improvements & New Shelter

CUNARD AVENUE PARK



DOVER STREET PARK

BREC NEIGHBORHOOD PARK

DESCRIPTION

Dover Street Neighborhood Park site renovations includes site grading, subsurface drainage, limestone parking improvements with ADA parking and accessible walks. The site features all new site

furnishings, a walking loop and new fitness equipment complete with a shade structure. A portion of these improvements are being paid for by Capital Outlay Funding.

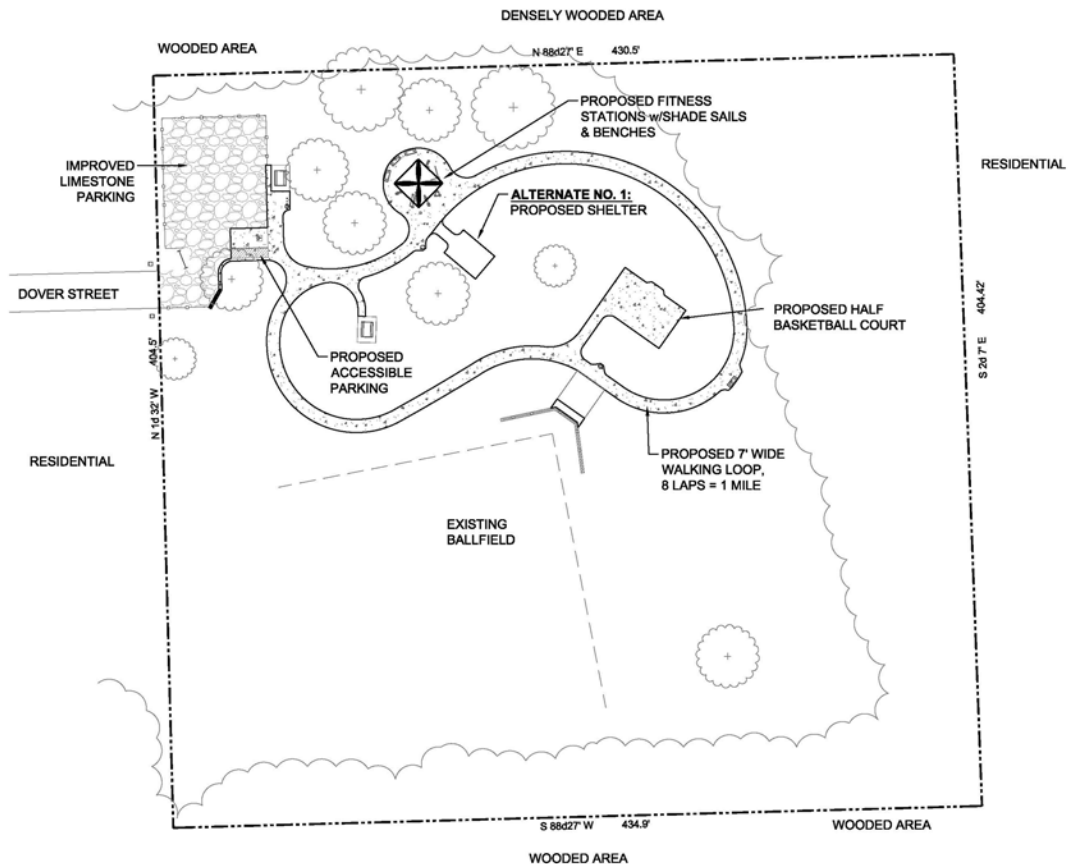
PROJECT DATE

2014 Park Renovations

PROJECT COST

\$25,000 BREC Funding
\$115,000 Capital Outlay Funding

SITE PLAN



DOVER STREET PARK



DOVER STREET PARK BREC NEIGHBORHOOD PARK

PROJECT PHOTOS



Parking Area before Improvements



New ADA Parking with Accessible Walks

DOVER STREET PARK



Old Multi-Use Court



New Half Basketball Court



New Fitness Equipment



New Picnic Shelter



DRUSILLA LANE PARK **BREC NEIGHBORHOOD PARK**

DESCRIPTION

Drusilla Neighborhood Park is located just south of Old Hammond Hwy on Drusilla Lane.

Improvements include a new playground for ages 2-12, a refurbished tennis court

and a new picnic shelter. A refurbished lighted baseball field and new walks connect all park amenities making the park fully accessible.

PROJECT DATE

July, 2008 Playground Improvements

PROJECT COST

\$95,000 Site Improvements



DRUSILLA LANE PARK



DUCHESS DRIVE PARK **BREC NEIGHBORHOOD PARK**



DESCRIPTION

Duchess Drive Park site improvements include new ball field fencing, new bleachers and dugout seating. The half basketball court was refurbished and new entry sign installed with new entry gate,

and new picnic tables were installed throughout the park.

PROJECT DATE

2012 Site Improvements Complete

PROJECT COST

\$13,000 Site Improvements

DUCHESS DRIVE PARK



EAST POLK STREET PARK **BREC NEIGHBORHOOD PARK**



DESCRIPTION

Renovations to East Polk Street Park include a new playground with connecting walks to improve pedestrian access and a paved parking area. New picnic tables and benches were installed.

The ball field backstop and basketball court were also refurbished.

PROJECT DATE

2013 Improvements Complete

PROJECT COST

\$65,000 Site Improvements

EAST POLK STREET PARK



EVANGELINE STREET PARK

BREC NEIGHBORHOOD PARK

DESCRIPTION

Evangeline Neighborhood Park was renovated in 2007. These renovations included adding a quarter of a mile exercise loop, a new playground, new handicapped accessible sidewalks, parking, and a new football practice area. The exercise loop and new walks tie into

a renovated basketball court as well as the existing walking bridge that crosses over Hurricane Creek. The existing large ball field has been refurbished and new shade trees were added throughout the park in 2011.

PROJECT DATE

2007 Site Improvements

PROJECT COST

\$125,000 Site Improvements



EVANGELINE STREET PARK



EVANGELINE STREET PARK

BREC NEIGHBORHOOD PARK

PROJECT SITE PLAN



EXPRESSWAY PARK **BREC NEIGHBORHOOD PARK**



DESCRIPTION

Expressway Park underwent a master planning process for park renovations. Two public planning meetings were held at the recreation center and a conceptual master plan was presented to the public showing potential site enhancements. Improvements include a renovated recreation center, additional picnic areas, site amenities and improved practice field. A new multi-use trail was completed in

2014. Through a great partnership between the City-Parish/Downtown Development District (DDD) and BREC; funding was secured to improve connectivity throughout Expressway Park and surrounding areas by developing a multi-use pathway. Spearheaded by Downtown Development District the pathway will traverse the park as part of the greater Downtown Greenway.

EXPRESSWAY PARK

PROJECT DATE

- March 2013 1st Public Planning Meeting
- May 2013 2nd Public Planning Meeting
- 2013 - 2014 Park Renovations Are Underway
- March 2015 Greenway Trail Ribbon Cutting
- 2015 Renovate Basketball Court



PROJECT COST

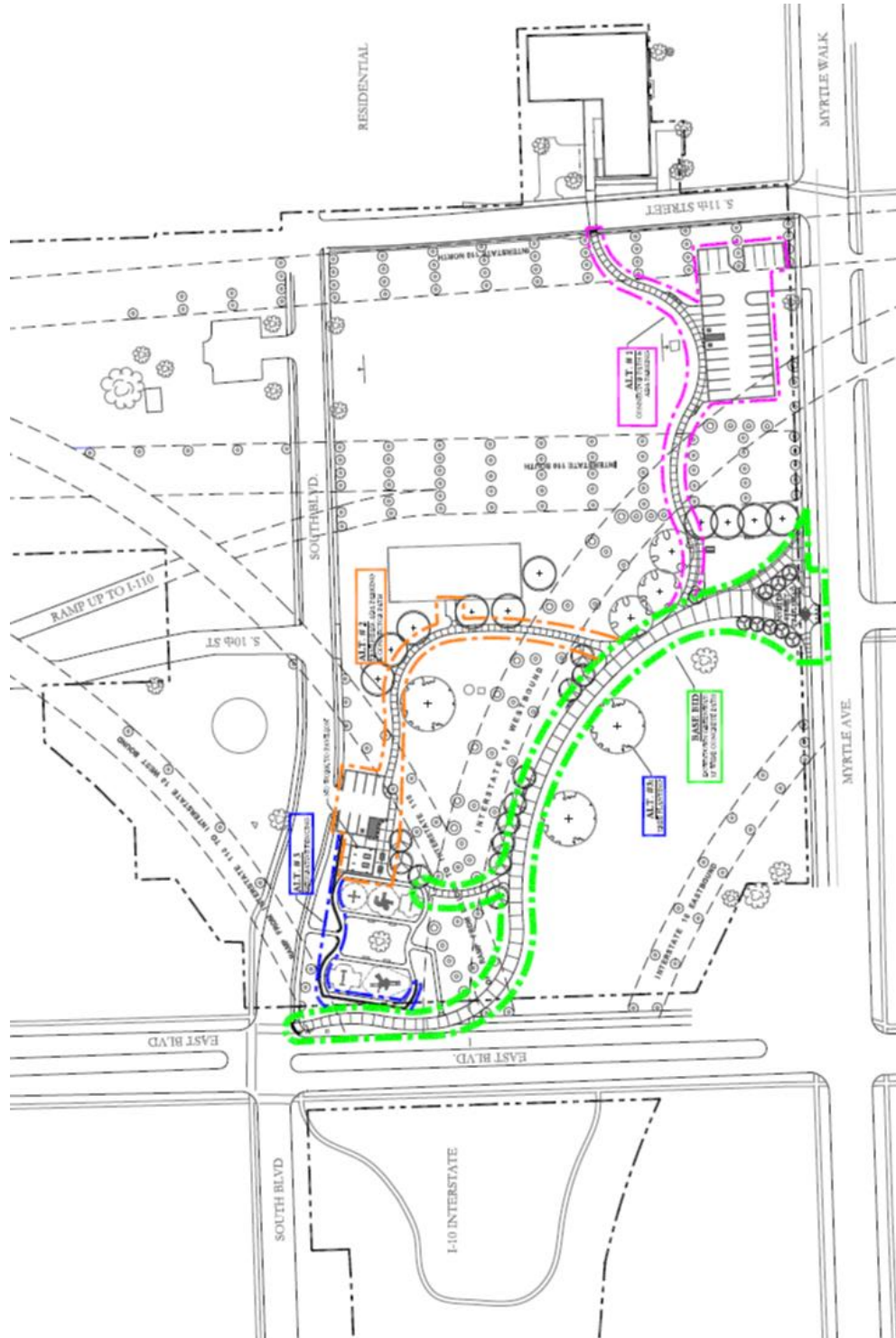
- \$145,000 Recreation Center Renovations
- \$230,000 RTP Grant for Downtown Greenway PH I & II Through DDD
- \$20,000 Renovated Basketball Court (\$10,000 Donation from Walk On's)



EXPRESSWAY PARK

BREC NEIGHBORHOOD PARK

PROJECT SITE PLAN



EXPRESSWAY PARK



EXPRESSWAY PARK BREC NEIGHBORHOOD PARK

PROJECT PHOTOS



Recreation Center During Renovations



Renovated Recreation Center

EXPRESSWAY PARK



Restroom Building Before Demolition



Converted Restroom Into Picnic Shelter



New Downtown Greenway



New Downtown Greenway

