
NEIGHBORHOOD PARK



N-Z

NAIRN PARK **BREC NEIGHBORHOOD PARK**



DESCRIPTION

Nairn Park is situated along Interstate 10 and located on Nairn Drive near Valley Park. The recreation center was renovated and a new addition added to the front containing office space, restrooms, and two new activity rooms. Other improvements to the park include a reconfigured

parking lot with ADA parking, a new playground, a new picnic shelter, refurbished ball field, new half basketball court and a new walking loop. All amenities are ADA compliant including new sidewalks, benches and picnic shelter.

PROJECT DATE

- 2007 Recreation Center Addition
- 2009 Master Plan & Park Construction

PROJECT COST

- \$575,000 Recreation Center Addition
- \$105,000 Master Plan & Park Construction

NAIRN PARK



NAIRN PARK **BREC NEIGHBORHOOD PARK**

PROJECT SITE PLAN



NAIRN PARK

BREC NEIGHBORHOOD PARK

PROJECT PHOTOS



NAIRN PARK



NORTH 14TH STREET PARK **BREC NEIGHBORHOOD PARK**



DESCRIPTION

This park is located between North Blvd and Florida Street, east of Interstate I-110 in downtown Baton Rouge. The renovated recreation center features a new boxing room with new ventilation equipment and

floor to ceiling rolling metal doors that now opens to the activity room. New storage and multipurpose rooms were also created.

PROJECT DATE

2007 Recreation Center Renovations

PROJECT COST

\$70,000 Recreation Center Renovations

NORTH 14TH STREET PARK



NORTH 18TH STREET PARK **BREC NEIGHBORHOOD PARK**



DESCRIPTION

Renovations to North 18th Street Park are underway. Park improvements include new playground equipment, improved site drainage, fencing, new connecting walks, new water fountain,

benches and picnic tables, and refurbished basketball court. Renovations were complete in January 2014.

PROJECT DATE

2013-2014 Park Improvements

PROJECT COST

\$64,000 New Playground & Site Improvements

NORTH 18TH STREET PARK



NORTH STREET PARK **BREC NEIGHBORHOOD PARK**



DESCRIPTION

Major renovations in 2006 to North Street Neighborhood Park include a new playground with walks, a renovated ball field and parking lot improvements. The park also received new perimeter

security lighting treatments and clearing of sight lines for park security patrols. In 2009 improvements to the Recreation Center were completed.

PROJECT DATE

- February 2006 Public Survey
- 2006 New Playground & Site Improvements
- 2009 Recreation Center Renovations

PROJECT COST

- \$125,000 Site Improvements
- \$40,000 Beck Street Demolition

NORTH STREET PARK



NORTH STREET PARK BREC NEIGHBORHOOD PARK

PROJECT SITE PLAN



NORTH STREET PARK

BREC NEIGHBORHOOD PARK

PROJECT PHOTOS



NORTH STREET PARK



OLD HAMMOND HIGHWAY PARK

BREC NEIGHBORHOOD PARK

DESCRIPTION

Old Hammond Highway Park is located near Tara Subdivision and features a playground, tennis court, skate park and walking trail. The neighborhood park went through a planning and design process with input from the Tara Civic Association.

Improvements include clearing underbrush to improve site lines, installing a trail through the park along with new picnic areas and modular skateboard equipment was installed on one of the existing tennis courts to create a mini skate park.

PROJECT DATE

2006 Park Renovations

PROJECT COST

- \$15,000 Skateboard Park
- \$125,000 Site Improvements



OLD HAMMOND HIGHWAY PARK



PALOMINO DRIVE PARK **BREC NEIGHBORHOOD PARK**

DESCRIPTION

Palomino Drive Park is tucked away in the Bridlewood Subdivision located in the City of Central. The neighborhood park features a small recreation center, eight lighted tennis courts, pavilion, fishing lake

and playground. Improvements to the park include a new picnic shelter with picnic tables and accessible parking near the playground, the recreation center was refurbished and playground improved.

PROJECT DATE

- 2009 - 2010 Site Improvements
- 2011 Tennis Courts Resurfaced

PROJECT COST

- \$30,000 New Picnic Shelter & Accessible Parking
- \$26,500 Recreation Center Renovations
- \$15,000 Playground Improvements



PALOMINO DRIVE PARK



PARKVIEW PARK **BREC NEIGHBORHOOD PARK**



DESCRIPTION

Parkview Park is located in the Broadmoor area near Airline Highway. The neighborhood park under went a master planning process in 2005. Improvements include constructing a new picnic pavilion,

renovating the ball field back stop, tennis courts and adding bleachers. A new pedestrian bridge is in place and a walking trail now loops the entire park.

PROJECT DATE

2005 Site Improvements

PROJECT COST

\$145,000 Park Renovations

PARKVIEW PARK



PAWNEE STREET PARK **BREC NEIGHBORHOOD PARK**



DESCRIPTION

Pawnee Street Park is located in north Baton Rouge adjacent to Scenic Highway and has been redeveloped due to a fire that damaged the recreation center in 2008. It is now an open park that features

a full outdoor basketball court, drinking fountain, picnic area and open green space to play.

PROJECT DATE

- 2008 Recreation Center Cleanup Due To Fire
- 2012 Site Improvements Complete

PROJECT COST

- \$25,000 Recreation Center Cleanup Due To Fire
- \$37,000 Recreation Center Demolition
- \$20,000 Site Improvements

PAWNEE STREET PARK



PLANK ROAD PARK **BREC NEIGHBORHOOD PARK**



DESCRIPTION

Plank Road Park is a large site consisting of 77 acres that stretches from Plank Road to the Comite River. Amenities include a recreation center with indoor basketball, lighted ball fields and a playground. It underwent a master planning process for park renovations in 2013. Conceptual plans were presented to the public showing potential site enhancements

throughout the park. Citizens were encouraged to share their vision of the park. BREC developed those ideas into construction documents, which then led to the construction of new park amenities. Improvements include two separate playgrounds for 2-5 and 5-12 age groups, landscaping, and new ADA parking with accessible walks to ball fields.

PLANK ROAD PARK

PROJECT DATE

- 2005 Site Improvements, New Parking & New Field
- April 23, 2013 Public Planning Meeting
- 2014 Phase I Site Improvements

PROJECT COST

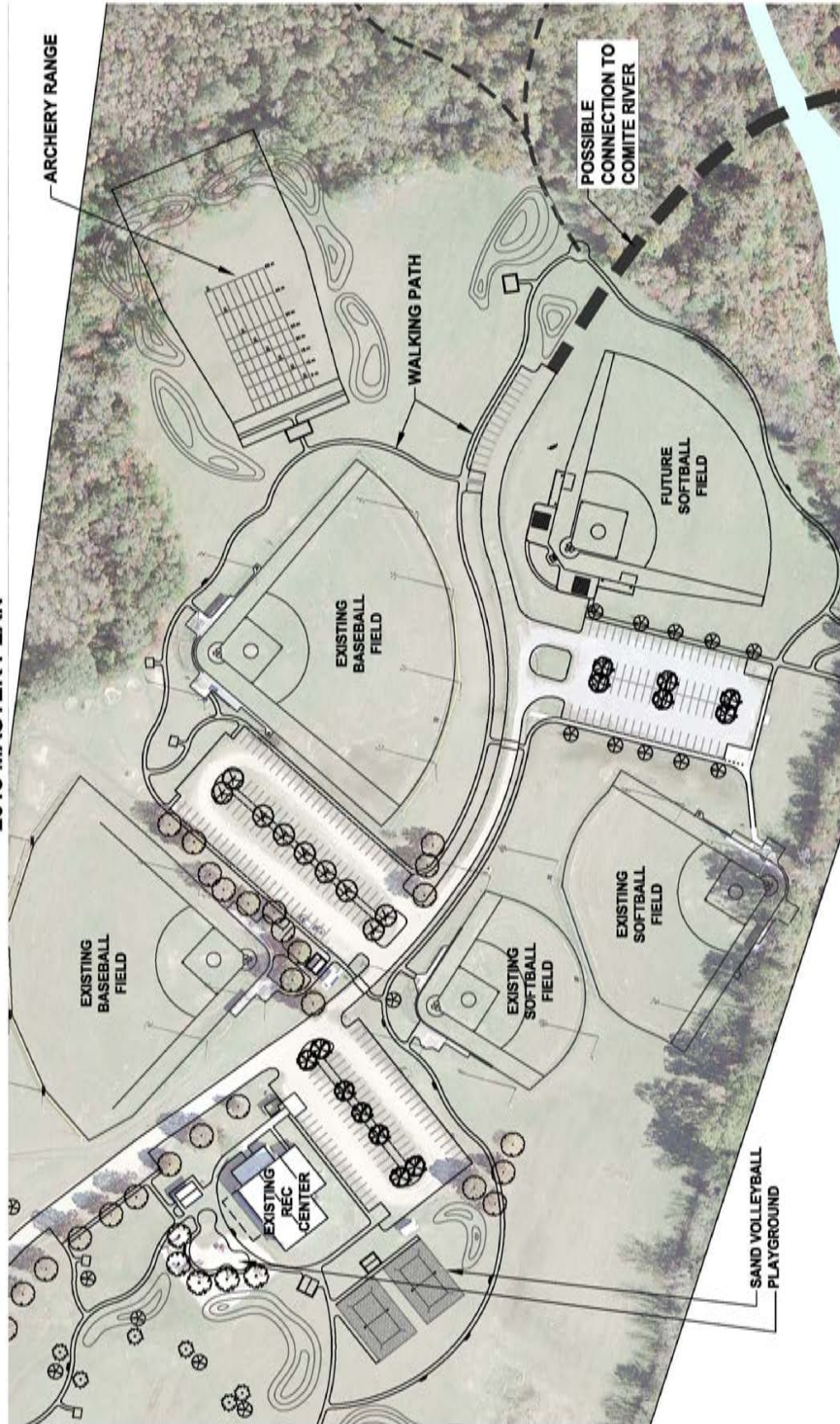
- \$30,000 Ball field Renovations & New Lighted Field
- \$25,000 New Parking Lot
- \$264,000 Phase I Site Improvements



PROJECT SITE PLAN



PLANK ROAD PARK
2013 MASTER PLAN



RAILEY ROSHTO PARK **BREC NEIGHBORHOOD PARK**



DESCRIPTION

Railey Roshto Park is located within a subdivision in the City of Central. Improvements include a new picnic pavilion with new connecting walks, new picnic tables, site drainage improvements and new

ADA accessible parking with connecting path.

PROJECT DATE

2009 Site Improvements

PROJECT COST

- \$25,000 New Picnic Pavilion
- \$20,000 New ADA Accessible Parking & Paths

RAILEY ROSHTO PARK



RED OAKS PARK **BREC NEIGHBORHOOD PARK**

DESCRIPTION

Red Oaks Park is located in Red Oaks area near North Sherwood Forest Boulevard. Improvements include a new playground with accessible walks, new sand volleyball court, a renovated tennis

court and refurbished ball field with lighting. The recreation center also received improvements.



PROJECT DATE

2012 Site Construction

PROJECT COST

\$32,000 Recreation Center & Site Construction

RED OAKS PARK



RIO DRIVE PARK **BREC NEIGHBORHOOD PARK**



DESCRIPTION

Rio Drive Park is located next to Merrydale Elementary in Holiday Hills subdivision. Improvements include a new playground with safety surface, perimeter pathway and new benches located near

the parking lot, improved drainage, new accessible parking and connecting pathway.

PROJECT DATE

2012 New Playground Complete

PROJECT COST

\$35,000 New Playground

RIO DRIVE PARK



ROLLINS ROAD PARK **BREC NEIGHBORHOOD PARK**



DESCRIPTION

Rollins Road Park is located in Zachary. Improvements include a new large cover over the existing basketball court. Accessible parking and walking paths were constructed along with a new playground with

safety surface and benches. The ball fields were also renovated.

PROJECT DATE

2010 - 2011 Site Improvements

PROJECT COST

- \$20,000 Basketball Court Cover Design
- \$144,000 Airnasium (State Capital Outlay \$98,000)
- \$37,000 New Playground & Site Improvements

ROLLINS ROAD PARK



ROOSEVELT STREET PARK **BREC NEIGHBORHOOD PARK**



DESCRIPTION

Roosevelt Street Park site improvements are complete. Renovations include improved pedestrian pathways, a new playground, signage and refurbished basketball court.

PROJECT DATE

2013 Park Renovations

PROJECT COST

\$36,000 New Playground & Site Improvements

ROOSEVELT STREET PARK



SAIA PARK

BREC NEIGHBORHOOD PARK

DESCRIPTION

Saia Neighborhood Park is located in Melrose East subdivision and features a recreation center, multi-use tennis court, outdoor basketball court, and lighted ball field. Improvements include additional

security lighting, refurbished basketball court, renovated restrooms, storage area and activity rooms.

PROJECT DATE

2007 Renovations

PROJECT COST

\$75,000 Recreation Center & Site Improvements

SAIA PARK



SCOTLANDVILLE PARKWAY **BREC NEIGHBORHOOD PARK**



DESCRIPTION

Scotlandville Parkway stretches from Airline Highway to Highway 61 within the right-of-way and of Interstate 110. The parkway corridor provides a network of multi-use trails linking citizens to activity centers surrounding the community. Enhancements are underway to

the multi-use pathway and renovations to five pedestrian bridges. In 2009 BREC entered into a cooperative endeavor agreement with the YMCA and built the Howell Place Gym at ExxonMobil YMCA adjacent to the Parkway on 72nd Street in north Baton Rouge.

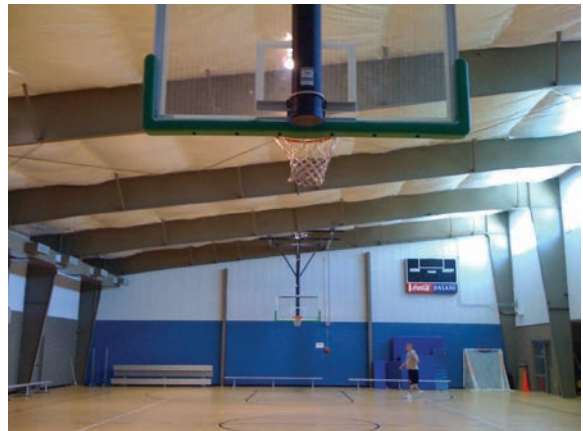
PROJECT DATE

- 2009 - 2010 New Howell Place Gym
- 2011 - 2014 Pathway & Bridge Renovations

PROJECT COST

- \$816,000 Howell Place Gym at ExxonMobil YMCA
- \$50,000 Trail Renovations

SCOTLANDVILLE PARKWAY



SHARP ROAD PARK **BREC NEIGHBORHOOD PARK**



DESCRIPTION

Sharp Road Neighborhood Park underwent a master planning process. Improvements include repairs to the ball field lighting, a new playground located between the recreation center and ball

fields, improved drainage throughout the site and installing connecting walks. The wood siding was replaced on the recreation center exterior.

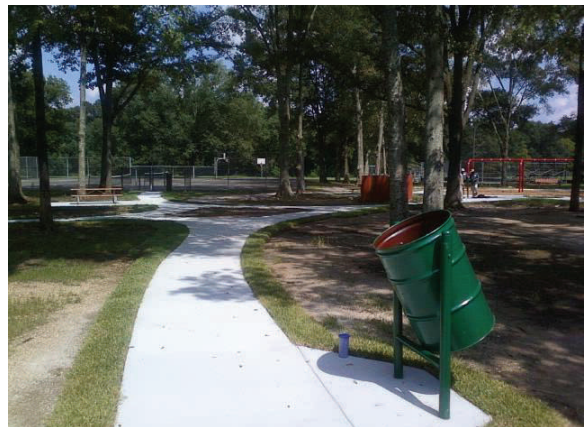
PROJECT DATE

2012 Site Improvements

PROJECT COST

\$97,000 Site & Building Renovations

SHARP ROAD PARK



SOUTH MAGNOLIA PARK

BREC NEIGHBORHOOD PARK

DESCRIPTION

South Magnolia Park improvements include a new playground with safety surfacing, new benches and new ADA accessible parking with connecting sidewalks.

PROJECT DATE

2012 New Playground

PROJECT COST

\$50,000 New Playground & Site Improvements

SOUTH MAGNOLIA PARK



SPORTS ACADEMY PARK

BREC NEIGHBORHOOD PARK

DESCRIPTION

Located in downtown Baton Rouge, BREC's Sports Academy provides a place for athletes to improve their physical conditioning and practice basketball skills.

In 2008 the center received new air conditioning system.

PROJECT DATE

2008 New Air Condition

PROJECT COST

\$50,000 Infrastructure Upgrade

\$10,000 Building Study



SPORTS ACADEMY PARK



SUGARLAND PARK **BREC NEIGHBORHOOD PARK**

DESCRIPTION

Sugarland Park was renovated in 2014. Improvements include a new playground, a 5 foot wide concrete walking circuit, 5 outdoor fitness stations, parking

improvements, new site furnishings, and landscape improvements.



PROJECT DATE

2014 Phase I Site Improvements

PROJECT COST

\$160,000 Phase I Site Improvements (Capitol Outlay Funding \$70,000)

SUGARLAND PARK



TAMS DRIVE PARK **BREC NEIGHBORHOOD PARK**



DESCRIPTION

Tams Drive Park is located in Forest Oaks subdivision. Site improvements to the neighborhood park include new ADA accessible parking with walking paths that lead to the restroom, playground and ball field. The

basketball court and ball field were refurbished as well as the restroom facilities.

PROJECT DATE

2013 Site Improvements Complete

PROJECT COST

\$38,000 Site Improvements

TAMS DRIVE PARK



T.D. BICKHAM, JR. PARK

BREC NEIGHBORHOOD PARK

DESCRIPTION

T.D. Bickham, Jr. Park located near Plank Road in Baker features a recreation center, playground and open play space. In 2008, the existing parking lot located along side the recreation center

was expanded to provide additional parking and the access walk was extended as well.

PROJECT DATE

2008 Parking Addition

PROJECT COST

\$20,000 Additional Parking & Lighting Improvements

T.D. BICKHAM, JR. PARK



THIRTY-NINTH STREET PARK **BREC NEIGHBORHOOD PARK**



DESCRIPTION

Thirty-Ninth Street Park is located in the Zachary area and features a ball field, two tennis courts and restrooms. In 2012 a new playground was installed with perimeter walk and new wood fiber safety

surfacing. The tennis courts were refurbished and a push button timer install for night time use. ADA parking was installed with connecting walks to the ball field and restroom.

THIRTY-NINTH STREET PARK

PROJECT DATE

2012 Site Construction

PROJECT COST

\$50,000 New Playground & Site Improvements



WEBB MEMORIAL PARK

BREC NEIGHBORHOOD PARK

DESCRIPTION

Webb Park underwent a master planning process for playground renovations. Two conceptual plans were developed. Both plans present new and improved park amenities including new walkways, a new playground with a picnic shelter and benches. Area residents played an active role during the planning process and joined forces with the BREC Foundation to raise funds to make the new play area an even better than imagined.

The pool area was redesigned into a multi-purpose lawn featuring a garden pergola with seating and that offers many recreational opportunities such as grass volleyball, badminton, and movies on the lawn. Enhanced features on the lawn include a kid's art plaza for chalk drawing and art plaza event pavilion. Other enhanced features are decorative rubber surfacing at the playground and a children's discovery/sensory garden.

WEBB MEMORIAL PARK

PROJECT DATE

- May 20, 2012 Public Planning Meeting
- 2013 - 2014 Neighborhood Park Renovations
- 2014 Fitness Center Roof Renovations

PROJECT COST

- \$300,000 Neighborhood Park Renovations (Friends of Webb Park \$90,000)
- \$65,000 Fitness Center Roof Renovations



PROJECT SITE PLAN



- PLAN KEY**
- A. MULTI-PURPOSE LAWN
 - B. NEW 2-12 YR. OLD PLAYGROUND
 - C. NEW SWINGS/TOT SWINGS
 - D. NEW WALKING PATHS
 - E. SPIRAL BALANCE PATH
 - F. SOFT FOUNTAIN
 - G. SOFT ROLLING BERMS/TOPOGRAPHY
 - H. BENCHES
 - I. PICNIC PAVILION
 - J. GARDEN PERGOLA WITH SEATING
 - K. GARDEN FOUNTAIN
 - L. LANDSCAPED BEDS
 - M. BLACK WYTH CHAIN LINK FENCE
 - N. BOLLARDS

ENHANCED FEATURES

O. DECORATIVE RUBBER SURFACING	\$15,000
P. KID'S ART PLAZA (DRAWING, CHALK)	\$12,000
Q. ART WALL (ART, DRAWING)	\$10,000
R. BENCH (PARK BENCH)	\$8,000
S. WHIMSICAL SHADOWBOXES	\$6,000
T. LARGE SAND PLAY WITH SEAT WALL	\$10,000
U. SEPARATE 2-5 YR. OLD PLAY AREA	\$10,000
V. CHILDREN'S GARDEN (SENSORY GARDEN)	\$4,000
W. ART TILES (ON WALL FACE)	\$5,000
W. SHADE TREES	

BREC WEBB MEMORIAL PARK PLAYGROUND

2. DRAFT SCHEMATIC PLAN
Enhanced Budget



WEBB MEMORIAL PARK

BREC NEIGHBORHOOD PARK

PROJECT PHOTOS



Playground Before Improvements



New Playground & Picnic Shelter



Pool Demolition



New Art Plaza Event Pavilion & Senior Activity Lawn



New Spiral Balance Path



New Garden Pergola with Seating

WEBB MEMORIAL PARK



WOODLAWN WALKING TRAIL

BREC NEIGHBORHOOD PARK

DESCRIPTION

BREC and the East Baton Rouge Parish School System entered into a cooperative endeavor in 2010 where the school system preserved a portion of land on the corner of Jones Creek Road and Tiger Bend Road for development as a park and

recreation asset to the school and community. New amenities include a 1/4 mile exercise trail, a picnic shelter, picnic tables, benches, and an expansive open play area.

PROJECT DATE

- 2010 Cooperative Endeavor Agreement
- 2011 Construction of New Park Complete

PROJECT COST

\$90,000 Site Construction

WOODLAWN WALKING TRAIL



WOODLAWN WALKING TRAIL

BREC NEIGHBORHOOD PARK

PROJECT SITE PLAN



YATASI DRIVE PARK **BREC NEIGHBORHOOD PARK**



DESCRIPTION

Yatasi Neighborhood Park underwent a master planning process that consisted of conducting a public meeting and providing public input surveys to collect information about the needs and wants of the community, and then produced a conceptual plan based on

the survey results, and finally a master plan reflecting the combined information. Improvements include a new picnic shelter with tables, improvements to the ball field backstop and site drainage, and a new pedestrian wood bridge connecting to the new playground.

PROJECT DATE

- November 2011 Public Meeting & Input Survey
- 2012 New Playground & Site Improvements Complete

PROJECT COST

\$50,000 Site Improvements

YATASI DRIVE PARK



