
SPECIAL USE





DESCRIPTION

This park is located on the south side of Burbank Drive, just east of Bluebonnet Road. The facility boasts 22 soccer fields, and is the largest soccer facility in East Baton Rouge Parish and has played host to large regional tournaments. The park also features a new Dog Park with separate fenced areas for large and small dogs, a pa-

vilion, walking path and dog pond. Other improvements include additional parking, improved vehicular circulation through out the park, and five new baseball fields. *247.84 Acres*

BURBANK PARK

PROJECT DATE

- 2007 Soccer & Ball Fields Construction
- 2009 Dog Park Construction
- 2011 Fishing Area Improvements
- 2012 Lighting Project

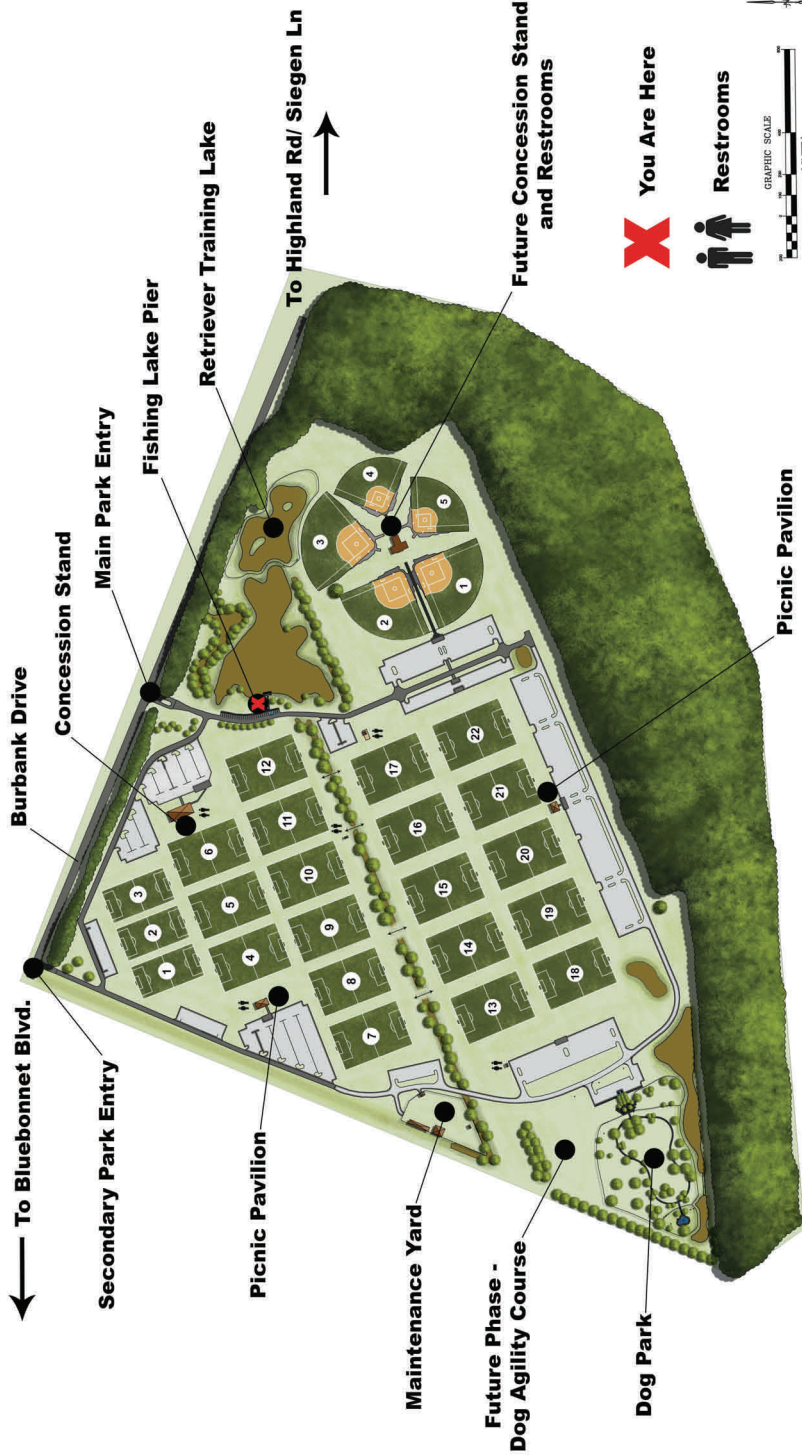


PROJECT COST

- \$3,700,00 Soccer & Ball Fields Construction
- \$595,000 Dog Park Construction
- \$75,000 Fishing Area Improvements
- \$35,000 Lighting Project



PROJECT SITE PLAN




BURBANK PARK



PROJECT PHOTOS



Soccer Fields



Soccer Fields

BURBANK PARK



Lake Parking—Before



Lake Parking— After



Dog Park—Before



Dog Park— After



CENTRAL SPORTS PARK

BREC SPECIAL USE

DESCRIPTION

Located in East Baton Rouge Parish, this unique park will provide outdoor recreation for the active sports community in Central. The various outdoor recreation spaces sits on approximately 55 acres of land. Phase One construction includes building two park entry drives, one from Hooper Road and another from Lovett

Road, five lighted ball fields, a recreational lake for fishing complete with walking path around the lake, concession building, and restrooms. The second phase of renovations include two additional ball fields with lighting, four multi-use fields, a new playground and approximately 330 additional parking spaces.



CENTRAL SPORTS PARK

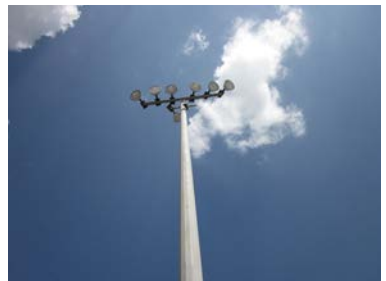
PROJECT DATE

- 2007 Design Phase
- 2008 - 2009 Design Development Phase
- 06/06/2009 Land Acquisition
- 01/22/2009 Commission Approved Master Plan
- 04/23/2009 Commission Approved Revised Master Plan
- 2008 - 2009 Construction Documentation Phase
- 09/21/2009 Clearing & Grubbing
- 2009 - 2011 Construction Documentation Phase
- 05/21/2011 Phase I Construction
- 2014 Phase II Construction



PROJECT COST

- \$20,000 Master Plan
- \$700,000 Land Acquisition
- \$165,000 Wetland Mitigation
- \$60,000 Clearing & Grubbing
- \$2,876,000 Ph I Construction
- \$400,000 Concession Bldg
- \$1,300,000 Ph II Construction



CENTRAL SPORTS PARK BREC SPECIAL USE

PROJECT SITE PLAN



Restrooms




Central Community Sports Park



CENTRAL SPORTS PARK

BREC SPECIAL USE

PROJECT PHOTOS



Ball Field & Concession Building



View Of Concession Building

CENTRAL SPORTS PARK



Park Entry Walks



Lighted Parking Lot



Ball Field



Ball Field



DESCRIPTION

This beautifully landscaped, heavily wooded land is used for the preservation and study of native plants and flora from other areas. BREC's Cohn Arboretum features more than 300 species of native and adaptable trees and shrubs, a fruit orchard, butterfly garden and bamboo collection. amenities and services include pamphlets, paved walkways, self-guided tours

and guided tours. A 1-mile paved trail circles the lake and another lake skirts a wooded area. Both are ADA accessible.

The asphalt parking lot was repaved and a new sidewalk installed in 2013.

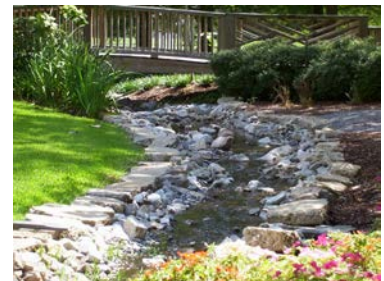
COHN ARBORETUM

PROJECT DATE

- 2009 Site Improvements
- 2010 Deck/Walks Improvements
- 2013 Parking Lot Improvements

PROJECT COST

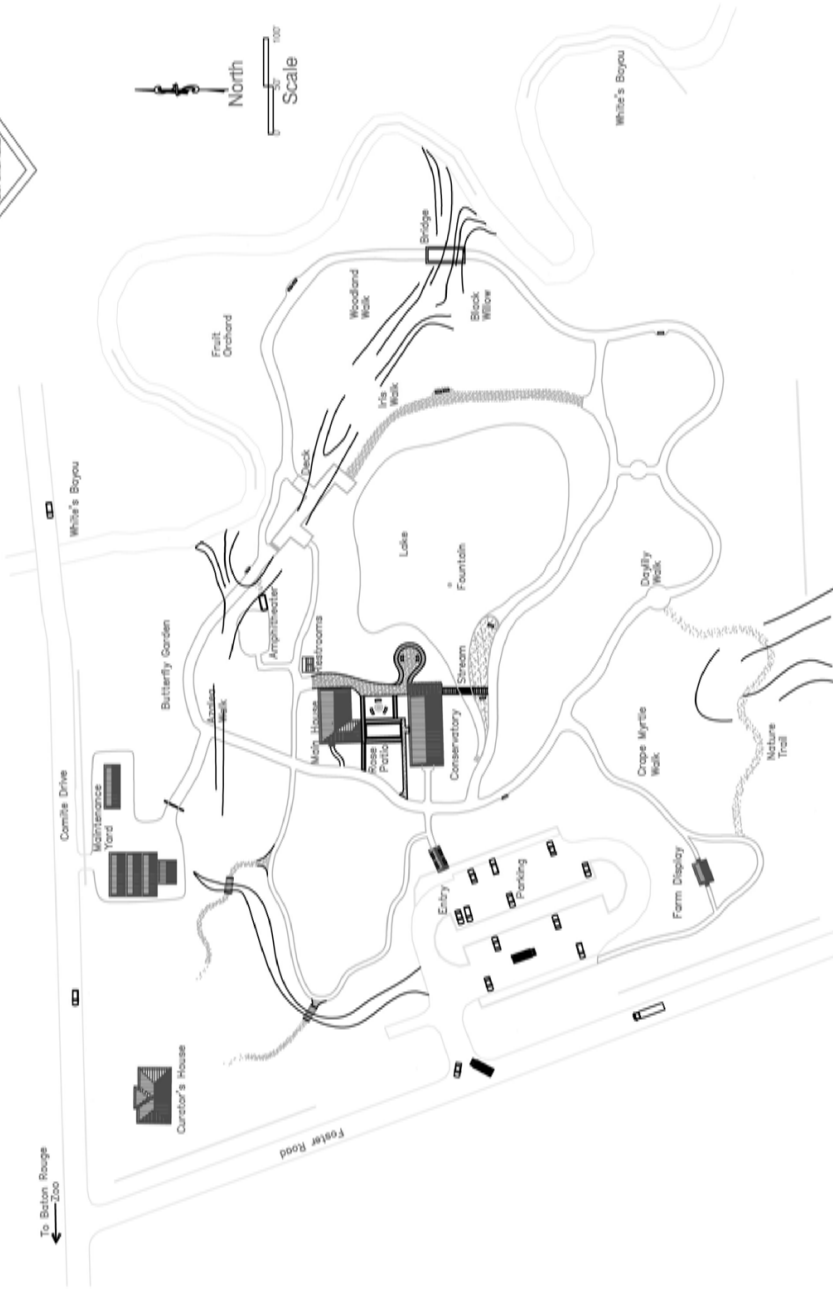
- \$70,000 Parking Lot/Sidewalk Improvements



PROJECT SITE PLAN



Laurens H. Cohn, Sr. Memorial Plant Arboretum



PROJECT PHOTOS



Parking Lot Prior to Improvements



Repaved Parking Lot



Sidewalk Prior to Improvements



New Sidewalk



Parking Lot Prior to Improvements



Parking Lot Repaved

COHN ARBORETUM



DESCRIPTION

Farr Park Horse Activity Center's upgrades were completed in 2007. Improvements include the newly installed eventing trails on the far west side of the property and new entrance and way finding signs installed throughout the entire park. Our new white fencing has been completed and is being put to good use along with two new equipment barns that house hay, and eventing trail equipment. The 300-acre facility houses

the Horse Activity Center which features a large indoor arena, an outdoor arena (both lighted), 256 stalls (available for rent), a cross-country event course, horse trails and RV campground. A Trailhead for cyclist is under construction with trail access to the River Road and Mississippi River Levee. The facility will provide an air pump, a water fountain, bike racks, restrooms and a pavilion.

FARR PARK EQUESTRIAN CENTER

PROJECT DATE

- 2005 Master Plan
- 2006 Eventing Trails
- 2006 Fence Construction
- 2006 Indoor Arena Renovations
- 2006 Farr Hay & Storage Barns
- 2006 Signage Upgrade
- 2011 Trailhead

PROJECT COST

- \$10,000 Master Plan
- \$250,000 Eventing Trails
- \$150,000 Fence Construction
- \$500,000 Indoor Arena Renovations
- \$225,000 Farr Hay & Storage Barns
- \$30,000 Signage Upgrade
- \$286,000 Trailhead



FARR PARK EQUESTRIAN CENTER

BREC SPECIAL USE

PROJECT SITE PLAN



FARR PARK AND HORSE ACTIVITY CENTER

6400 RIVER ROAD BATON ROUGE, LOUISIANA 70820
BREC PLANNING AND ENGINEERING



PROJECT PHOTOS



New Farr Trailhead



New Farr Trailhead



Old Entry Sign



New Entry Sign



New Equestrian Jumps



New Fans for the Indoor Arena



DESCRIPTION

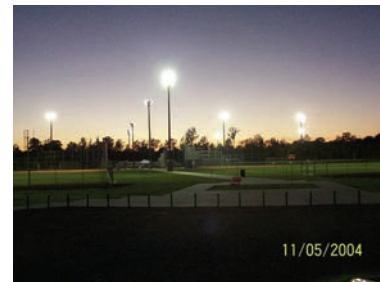
Hartley/Vey Sports Complex at Oak Villa is located between South Choc-taw Drive and Greenwell Springs Road. The ball park has been renovated in recent years with a state-of-the-art ball field complex containing eight lighted ball fields and a concession center. Situated across the street is a "passive use" neighborhood

park with a small basketball court, an open shelter, and a large open space for play. It has played host to some of the largest soft-ball tournaments in Louisiana over the last couple of years.

HARTLEY/VEY SPORTS PARK

PROJECT DATE

- 2006 Parking & Center Buildings
- 2006 Signage/Landscaping/Dugout Covers
- 2006 Lake Improvements
- 2006 Fire Pump/Irrigation Well and Pump
- 2007 Neighborhood Park Improvements



PROJECT COST

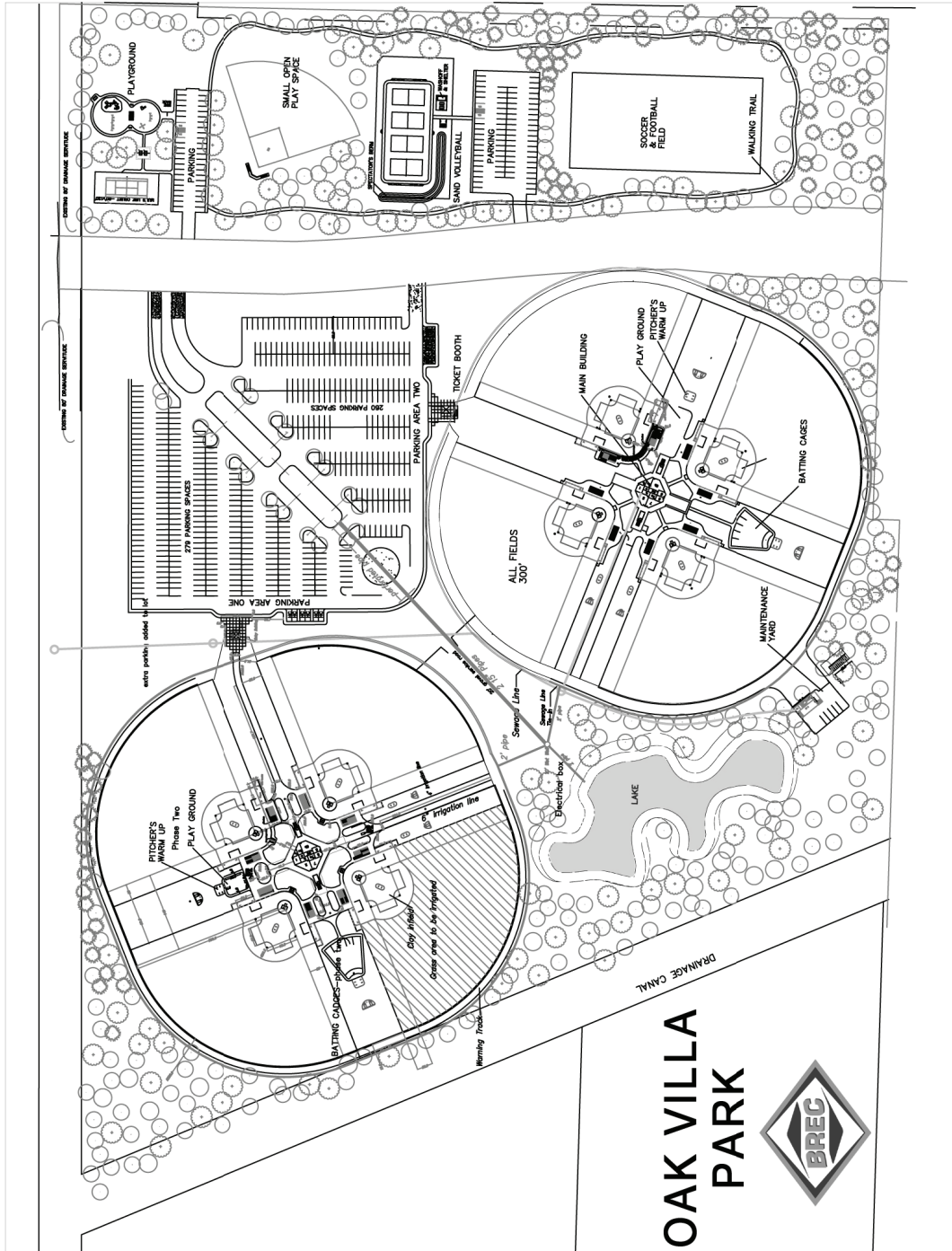
- \$800,000 Parking & Center Buildings
- \$15,000 Signage/Landscaping/Dugout Covers
- \$10,000 Lake Improvements
- \$60,000 Fire Pump/Irrigation Well and Pump
- \$40,000 Neighborhood Park Improvements



HARTLEY/VEY SPORTS PARK

BREC SPECIAL USE

PROJECT SITE PLAN



OAK VILLA
PARK



PROJECT PHOTOS



Concession Building Construction



Concession Building—Completed

HARTLEY/VEY SPORTS PARK



Dug Outs— No Shades



Dug Outs— With Shades



Neighborhood Park—During Construction



Neighborhood Park – Completed



DESCRIPTION

Liberty Lagoon is the newest aquatic facility at BREC. It is centrally located in East Baton Rouge Parish and sits on 3.5 acres of land in Independence Community Park. The master plan for Liberty Lagoon was developed by a joint venture of the nationally acclaimed firms of Kimley-Horn and Counsilman-Hunsaker & Associates. With over 400,000 gallons of water, the park features a "lazy river" where swim-

mers can float along on inner-tubes, a water vortex that swirls riders around in a circle, 3 wild slides, the yellow lunge, the purple plunge and the gator bowl, a lap pool, a shallow zero-entry lagoon featuring a playground and splash-pad, a sand volleyball court, picnic tables and group pavilions available for rental. Liberty Lagoon also offers aquatic based classes to adults and children of all skill levels.

LIBERTY LAGOON

PROJECT DATE

- 2008 Liberty Lagoon Aquatic Center Design
- 20010 Liberty Lagoon Aquatic Center
- 2011 Cook-Out and Pavilion additions

PROJECT COST

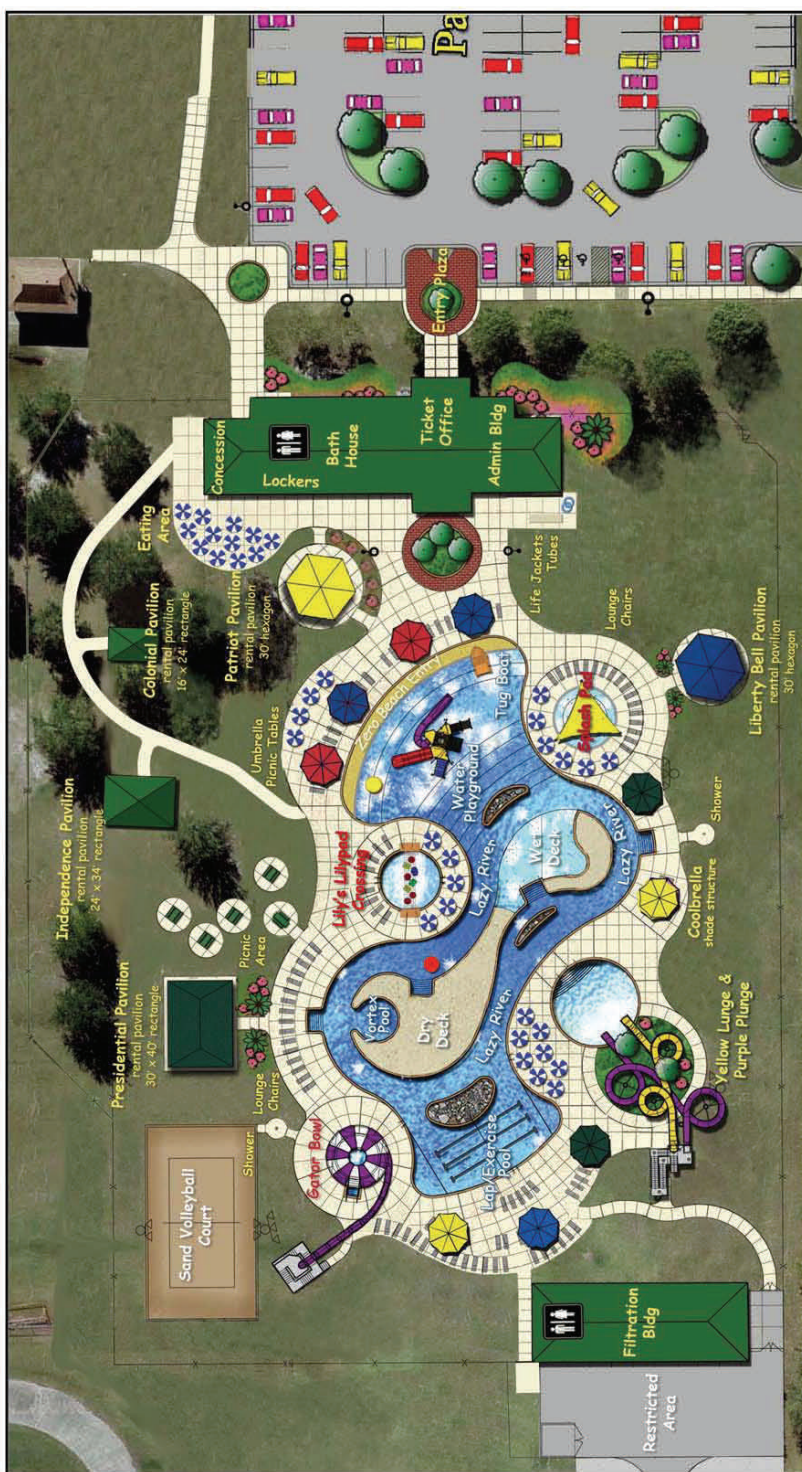
- \$450,000 Liberty Lagoon Aquatic Center Design
- \$6,700,000 Liberty Lagoon Aquatic Center
- \$75,000 Cook-Out and Pavilion additions



LIBERTY LAGOON

BREC SPECIAL USE

PROJECT SITE PLAN



Phone: 225-923-3202
 Fax: 225-923-3204
libertylagoon.com

Liberty Lagoon Family Aquatic Center
 111 Lobdell Ave, Baton Rouge, LA



LIBERTY LAGOON

BREC SPECIAL USE

PROJECT PHOTOS



LIBERTY LAGOON



MAGNOLIA MOUND PLANTATION BREC SPECIAL USE



DESCRIPTION

BREC's Magnolia Mound Plantation is a rare survivor of the vernacular architecture influenced by early settlers from France and the West Indies. Of the 900 original land-grant acres, BREC retains sixteen acres. The structures on the property include: Historic Museum House, Open-Hearth Kitchen, Overseer's House, Hart House Quarter House, Crop Garden, Pigeonnier, Carriage House, Barn Reception Area. Park improvements include Hart House painting and repair, site electrical and lighting, and the historic plantation house renovation and repairs were completed in

2010. Mrs. Sue Turner and her family generously donated \$1,283,804 to go towards a new visitor center which began construction in 2013. Mr. John Turner pledged an additional \$250,000 for the gift shop and signage enhancements at the new facility. The Turner Visitor Center will house the museum gift shop and feature a mini-theater for an introductory film about the historic property. It will also feature a large meeting room for receptions and exhibits about the history of Magnolia Mound.

MAGNOLIA MOUND PLANTATION

PROJECT DATE

| | |
|-----------|---|
| 2004 | Master Plan |
| 2004 | Hart House Painting/Repair |
| 2010 | Site electrical and Lighting |
| 2010 | Main House Renovation/Repair |
| 2011 | Fund Raising Efforts for Visitor Center |
| 2012 | Visitor Center—Master Planning and CDs |
| 2013-2015 | Visitor Center Construction |



PROJECT COST

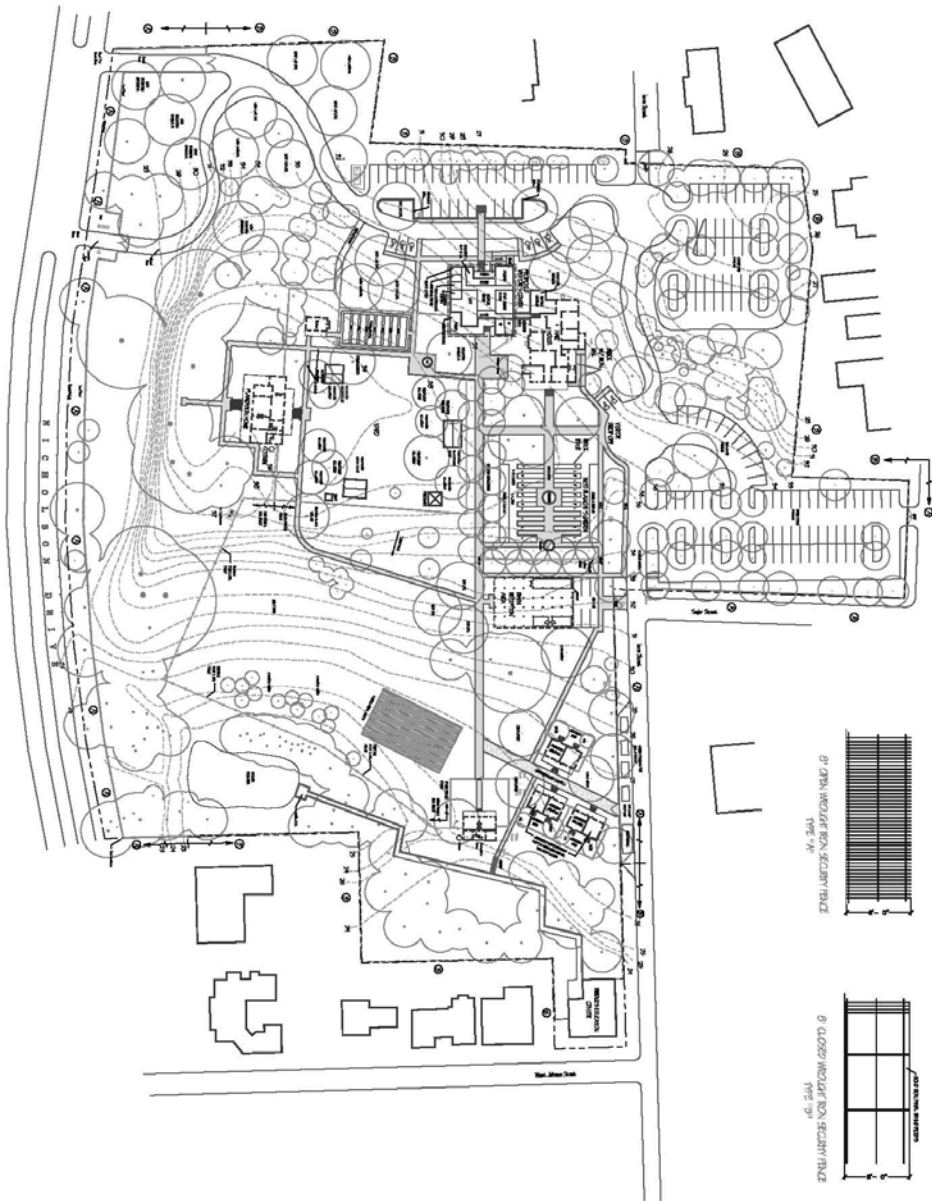
| | |
|-------------|------------------------------|
| \$15,000 | Master Plan |
| \$115,000 | Hart House Painting/Repair |
| \$195,000 | Site Electrical and Lighting |
| \$452,000 | Main House Renovation/Repair |
| \$1,760,000 | Visitor Center Construction |



MAGNOLIA MOUND PLANTATION

BREC SPECIAL USE

PROJECT SITE PLAN



PROJECT PHOTOS



MAGNOLIA MOUND PLANTATION



Plantation Home During Renovations



Plantation Home After Renovations



Electrical Infrastructure Installation



New Electrical infrastructure



Interior Before Painting



Newly Painted Interior



PROJECT PHOTOS



TRAHAN ARCHITECTS

Visitor Center Illustration



Visitor Center Site



Visitor Center Under Construction



DESCRIPTION



Memorial Sports Complex is adjacent to Interstate 110 in downtown Baton Rouge. The stadium seats 21,500 people and is used by local high schools and by BREC for football games. On special occasions, it is used for major special events. There are a number of restrooms, a concession area, parking facilities and the site also has two lighted ball diamonds.

Improvements to Memorial Stadium include new concrete ADA accessible parking and reconfigured stadium seating to allow for wheelchair access, concessions and renovated press box. In 2012 the field was completely renovated with a new drainage system and turf creating a more durable and safer playing surface for athletes.

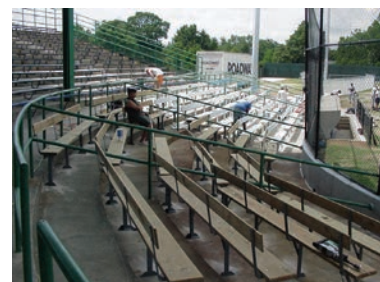
MEMORIAL SPORTS COMPLEX

PROJECT DATE

- 2005 Concession and Press Box Renovations
- 2007 HC Parking and Stadium Renovations
- 2012 Field Renovations

PROJECT COST

- \$50,000 Concession and Press Box Renovations
- \$100,000 HC Parking and Stadium Renovations
- \$85,000 Field Renovations



MEMORIAL SPORTS COMPLEX

BREC SPECIAL USE

PROJECT SITE PLAN



MEMORIAL SPORTS COMPLEX BREC SPECIAL USE

PROJECT PHOTOS



ADA Parking— Under Construction



ADA Parking—After

MEMORIAL SPORTS COMPLEX



Concession Stand—Before



Concession Stand— During Construction



Football Field—During Construction



Football Field- After





DESCRIPTION

We have been busy creating exciting animal exhibits for visitors to enjoy at BREC’s Baton Rouge Zoo. The Zoo has been in various stages of design and construction since 2005. Throughout these phases the zoo has remained open to the public. An education building and Zoo hospital were renovated,

improvements made to the visitor parking lot. Visitors can enjoy the new Realm of the Tiger exhibit, featuring Sumatran and Malayan Tigers, Siamang Gibbons and a walk-through Asian Aviary as well as the Safari Playground and Kids Zoo.

PROJECT DATE

- 2005 Master Plan Update
- 2005 Parking Lot Lighting/Drainage
- 2005 Zoo Safari Playground
- 2005 Zoo Back Gate Security Improvements
- 2005 Zoo Hospital & Educ. Building remodel
- 2007 Amenity Package of Misc Improvements
- 2007 Zoo Tortoise/Flamingo
- 2008 Maintenance Pavilion Renovations
- 2008 Exhibit Improvements
- 2010 Asian , Exhibit
- 2011 Parking lot Overlay & Landscaping
- 2011 Fencing and Pathway improvements
- 2012 Giraffe Exhibit Walk
- 2014 Exhibit Renovations to Airboat, Rhino House, and Spider Monkey Demolition

PROJECT COST

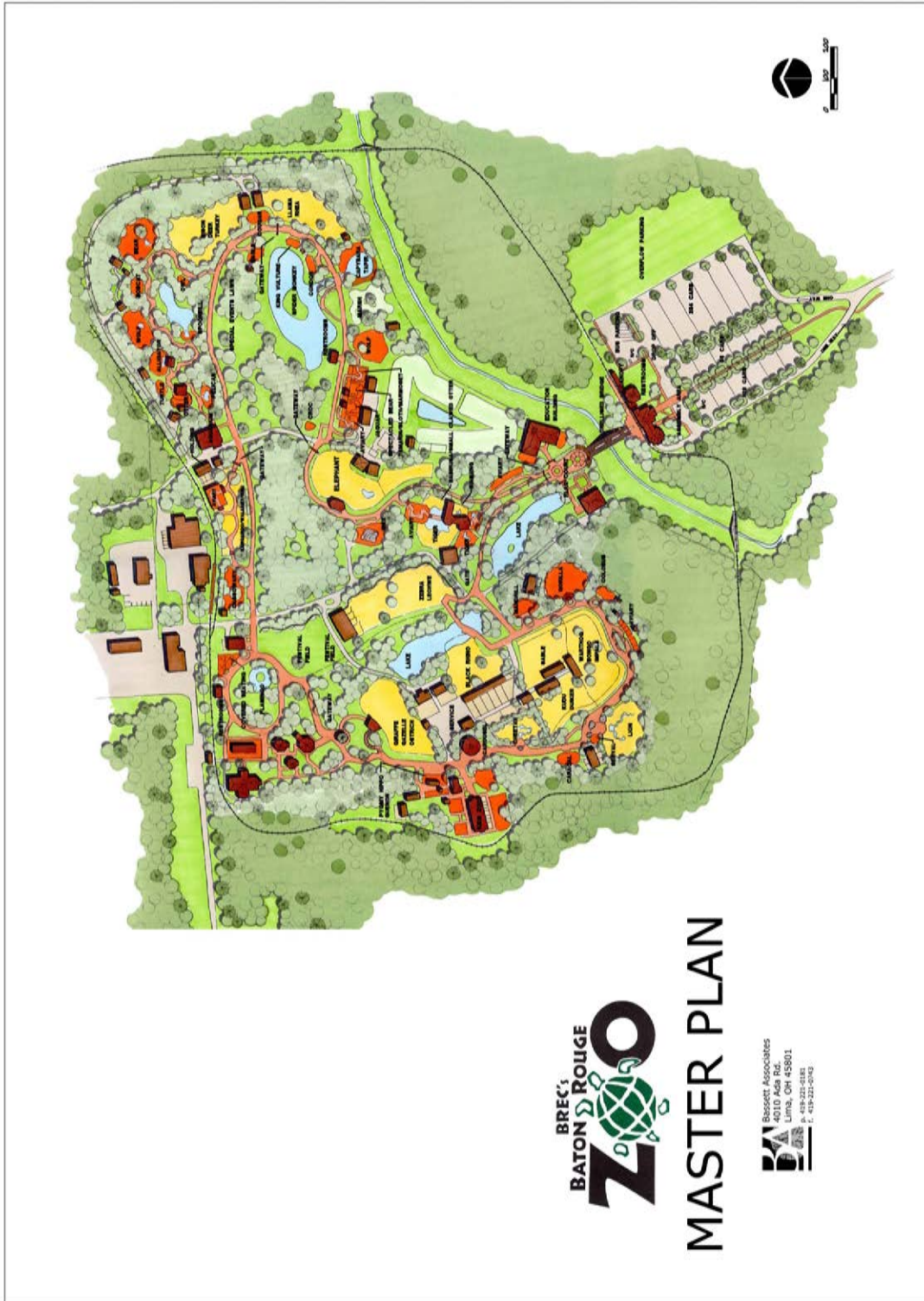
- \$35,000 Master Plan Update
- \$25,000 Parking Lot Lighting/Drainage
- \$100,000 Zoo Safari Playground
- \$25,000 Zoo Back Gate Security Improvements
- \$50,000 Zoo Hospital & Educ. Building remodel
- \$3,117,500 Amenity Package of Misc Improvements
- \$45,000 Zoo Tortoise/Flamingo
- \$50,000 Maintenance Pavilion Renovations
- \$70,000 Exhibit Improvements
- \$3,400,000 Asian , Exhibit
- \$220,000 Parking lot Overlay & Landscaping
- \$50,000 Fencing and Pathway improvements
- \$25,000 Giraffe Exhibit Walk
- \$50,000 Exhibit Renovations



BATON ROUGE ZOO



PROJECT SITE PLAN



MASTER PLAN



PROJECT PHOTOS



Kids Zoo Playground Before



Kids Zoo Playground After

BATON ROUGE ZOO



Tiger Exhibit Prior to Improvements



New Tiger Exhibit



Entry Walk Before



Entry Walk After Renovations



BATON ROUGE ZOO BREC SPECIAL USE

PROJECT PHOTOS



New Globe Fountain



New Restroom Facilities

BATON ROUGE ZOO



Refurbished Entry Plaza



Refurbished Cypress Bayou Railroad Station



Parking Lot Improvements



New Flamingo Exhibit

