

## COMMUNITY PARKS

Community Parks are large parks that serve a much larger geographic area than a neighborhood park and are designed to engage a family for an entire day. They range in size from a desirable 40-acre minimum to 100+ acres and serve a population of 80,000 to 200,000 in a 5-mile service radius. They serve a broader purpose than neighborhood parks and focus on meeting a wide variety of community-based recreation needs, and also serve the neighborhood park needs of adjoining residential areas.

Community Parks should include open space to accommodate athletic fields and courts, some natural amenities (trees), good access, adequate parking, buffers from neighboring residential zones, areas of natural or ornamental quality for nature appreciation, and recreation opportunities and amenities such as: picnicking, fishing, hiking, biking, general open space, play-fields and lighted athletic fields, recreation center, play apparatus, an aquatic feature, sports courts, parking, lighting, sidewalks, trails, and other features unique to each park.

## NEIGHBORHOOD PARKS

Neighborhood Parks remain as the basic facility of the BREC park system and serve the day-to-day recreation and open space needs of residential areas throughout all of EBR parish. Facilities may include: multi-use open space with provision for informal field games, multi-use court games, play apparatus areas, picnic, natural settings, tennis, group picnic, recreation center. Focus is on the informal activity, programmed activity, passive recreation and community cohesion.

## CONSERVATION AREAS

A Conservation Management Area is land which holds high conservation value but is within or part of an existing Community, Neighborhood or Special Use Park. These areas will be protected from

a certain degree of human use and development to conserve the biodiversity and ecosystems within the park. The level of human use allowed will be site-specific varying depending on the ecological value of the habitats and demand within the community for outdoor recreation outlets. In conjunction with conserving resources, these areas have the potential to be used for nature appreciation activities, programming and education to increase the public's understanding of the natural world and foster their conservation ethics. These areas may contain primitive hiking trails or nature trails.

## TRAILS

There are several types of trails within the BREC system. Park trails are commonly 4' to 12' wide paved trails within parks. Other types of trails within parks include primitive and nature trails. Of the two, nature trails are more developed, with wider more even surfaces than primitive trails, which are dirt surface, often with uneven footing.

Greenways are multi-use (bike/pedestrian) connecting trails connect people to parks, businesses, and work places. Creates alternative transportation options and conceived as green park corridors. Typically 12' wide accessible concrete paths with benches, waste receptacles, and water fountains. Blueways are water trails, or routes on navigable waterways such as rivers, creeks or canals, for recreational use.

## SPECIAL USE FACILITIES

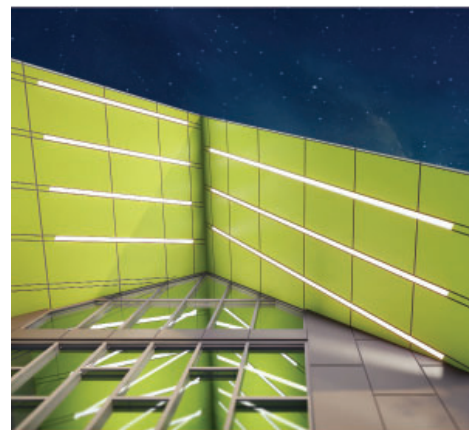
These parks are typically devoted to one unique recreational opportunity and often draw citizens from throughout the parish and beyond. The size of each facility varies from a few acres to 100+ acres based on the focus of each park. Many of these facilities are unique and must serve the needs of the entire parish as a result. (Zoo, Bluebonnet Swamp Nature Center, Liberty Lagoon, Golf Courses, Hartley-Vey Sports Park, Memorial Stadium, etc.)



**GREENWOOD PARK TRAIL**

## COMMUNITY PARKS TABLE OF CONTENTS

AIRLINE HIGHWAY COMMUNITY PARK.....	49
ANNA T. JORDAN COMMUNITY PARK .....	51
CITY-BROOKS COMMUNITY PARK .....	53
FOREST COMMUNITY PARK.....	57
GREENWOOD COMMUNITY PARK.....	59
HIGHLAND ROAD COMMUNITY PARK .....	63
HOWELL COMMUNITY PARK.....	65
INDEPENDENCE COMMUNITY PARK .....	69
JACKSON COMMUNITY PARK.....	71
NORTH SHERWOOD FOREST COMMUNITY PARK .....	73
PERKINS ROAD COMMUNITY PARK.....	75
SANDY CREEK COMMUNITY PARK.....	77
ZACHARY COMMUNITY PARK.....	79



# AIRLINE HIGHWAY COMMUNITY PARK

Located along US Highway 61 at the southern edge of East Baton Rouge Parish where Ward Creek meets historic Bayou Manchac.

Airline Highway Park was originally designated as a Special Use Facility within BREC's Park System and is the annual site for the Greater Baton Rouge State Fair. The rest of the year the 100-acre site generally operates in a manner like a Neighborhood Park with a playground, four ball fields, an airgun range, and a large picnic pavilion.

A park master planning process has been initiated by BREC to upgrade Airline Highway Park to a "Community Park" as defined by BREC's Imagine Your Parks 2 Strategic Plan. When improvements are made, Airline will be added to BREC's list of 12 Community Parks, filling a gap in outdoor recreation service to residents in the southeast corner of the parish as identified in the Strategic Plan.

BREC intends to convert the park from the Special Use Facility designation into a dynamic Community Park. One of the key features of the Master Plan will be a new BREC Recreation Center. The Recreation Center will also serve the region as a designated FEMA Safe Room. FEMA Safe Rooms are built to exceedingly high standards of building construction. When needed the Recreation Center will serve as a regional staging point and operations center for first responders and support personnel. At all other times it will be a BREC facility with BREC programming.

Community Park amenities that are being considered include a competitive baseball complex, multi-use athletic fields, native meadows, picnic pavilions, a splash pad, adventure playground, amphitheater, a new air gun range, kayak launch, hiking and nature trails and a maintenance facility.

Other objectives with the redesign are to implement green infrastructure practices, design for resilience and sustainability, implement nature-based stormwater management practices to help mitigate flood damage to properties in the watershed.

## PROJECT DATE

- 2020: Selection of MP Consultants
- 2020: Public Input Meetings Held
- 2021: BREC Commission Approve MP
- 2023: Schematic + Design Development
- 2024: Construction Documents for Ph 1
- 2025: Phase 1 Construction





# ANNA T. JORDAN COMMUNITY PARK

Anna T. Jordan Community Park serves as the keystone to the community of Scotlandville. This Park was the first community park developed under BREC's Imagine Your Parks (IYP) Strategic Plan. The scope of the project was to elevate the quality of the existing park through improvements of its existing recreation elements of baseball fields, playground, open spaces, parking, and vehicular access. In addition, the introduction of new program elements such as a new concession and restroom structure for the baseball fields, extensive lighted walking paths, park shelters, site furnishings, interpretive information, and overall improved unity and visual identity for the park.

In 2014, major renovations were completed to Anna T Jordan community pool and bath house. The original IYP Strategic Plan came to an end in 2014 and BREC immediately began the IYP2 Strategic Plan. Site improvements were now focused on the renovation of the recreational center.

Public meetings were held with the neighborhood during various stages of the planning process to identify what improvements to the recreation center were most needed by the community. From these meetings a final design was developed and approved.

The renovations and expansion of the recreation center at Anna T. Jordan was made possible through funding from State Capital Outlay. While in the Louisiana Senate, Mayor Sharon Weston Broome championed the efforts to receive state funding and secured \$1,435,000 for the project. The project totally \$1,922,800 added 6,400 square feet of additional space to the recreation center that includes a new fitness center, conference room, computer lab, new restrooms, new storage spaces and a new dressing room for the gym stage. In addition, the gym is now air conditioned, and the floor has been completely resurfaced.

The latest focus is reimagining the community playground area. Public input was received and through analysis and design development a new modern playground with shade and new gathering spaces have emerged.

## PROJECT DATE

- 2016: Recreation Center Renovation
- 2021: Master Planning for Playground Area
- 2022: Public Recycling Bins Installed (NRM)
- 2024: New LED Sport Field Lighting
- 2024: Playground Area - Design
- 2025: New Playground Construction





- A Large Dog Park (.83 acres)
- B Small Dog Park (.20 acres)
- C Entrance
- D Memorial Wall
- E Plaza
- F Small Pavilion / Bench
- G Existing Magnolia
- H Flex Gated Space (.13 acres)
- J Water Station
- K Existing Parking





# CITY-BROOKS COMMUNITY PARK

At City-Brooks Community Park, visitors can enjoy a wide range of recreational activities, from Picnic Hill playground to golf and tennis plus walking paths and a waterfront. And now a new croquet court offers additional opportunities for people of all ages to enjoy. The project was made possible by a public and private partnership with BREC and supporters of the game. The tournament quality croquet court features sports turf with irrigation and event space with a large pavilion and seating for community gatherings.

Another beloved amenity is the dog park at City-Brooks Community Park. The original construction of the Raising Cane's Dog Park was part of the major renovation of City-Brooks Community Park in 2007. The dog park has been in place for over ten years and is one of BREC's most popular and heavily used dog parks. It has endured a considerable amount of wear and tear and needed a renovation.

In 2017, BREC enlisted the services of Suzanne Turner and Associates to develop a master plan for the facility. The re-design builds upon the success of the original design, attempts to address maintenance, incorporating current dog park design concepts and provide new amenities. The dog park was expanded from its original size to include separate areas for large and small dogs as well as a dog washing station, additional entry points, site furnishings with increased seating, decomposed granite surfacing for erosion control, and extensive landscaping.

## ALSO AT CITY-BROOKS

### HISTORIC CITY GOLF COURSE

See Section: Special Use Parks + Facilities

### KNOCK KNOCK CHILDREN'S MUSEUM

See Section: Special Use Parks + Facilities

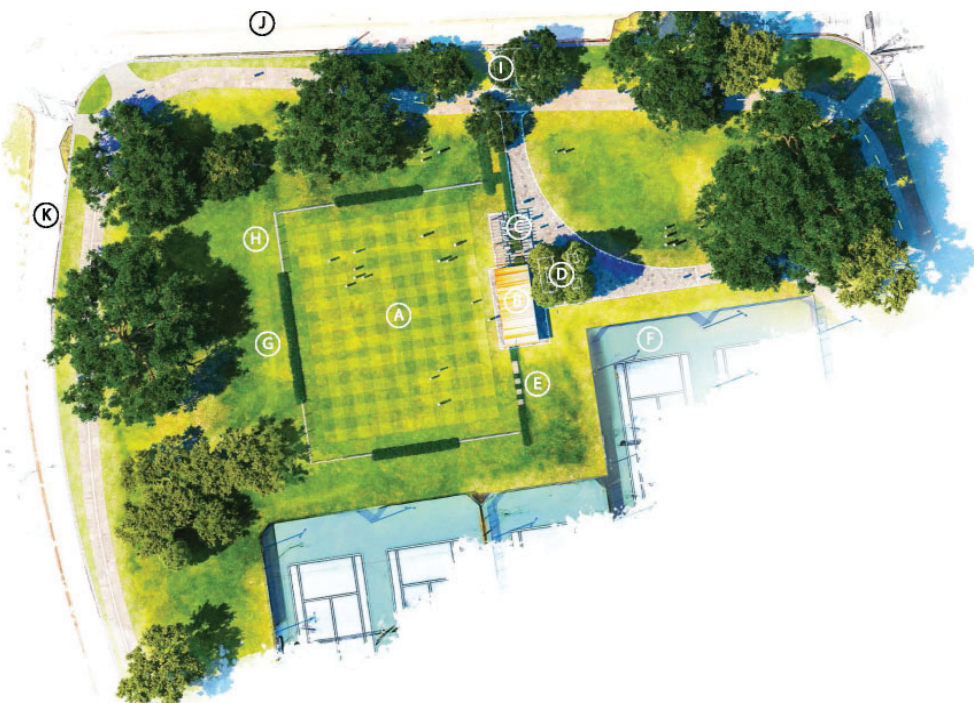
### CITY PARK GREENWAY

See Section: BREC Greenways + Blueways

## PROJECT DATE

- 2015: Wet Well Improvements
- 2015: Recycling Bins Installed (NRM)
- 2017: Knock Knock Children's Museum
- 2018: Croquet Court + Trailhead
- 2020 City Park Lake Vegetation Management (NRM)
- 2020: Dog Park Improvements
- 2020: City Golf Course Cart Path Improvements, 6th Tee Bridge, 5th Tee Wier
- 2021: City Golf Course Maintenance Shed Additions
- 2021: Picnic Hill Playground Improvements





- A Croquet Court (84'x105')
- B Pavilion (16'x40')
- C Arbor (16'x24')
- D Plaza
- E Seating
- F Tennis Courts
- G Evergreen Hedge
- H Fence (2.5')
- I Entry Walk
- J Magnolia Drive
- K Dalrymple Drive

# CITY-BROOKS COMMUNITY PARK

*Continued*

## CONSERVATION MANAGEMENT UNIT

City-Brooks Community Park was our first community park to receive public recycling bins as part of a pilot program. The bins were received through a grant with Dr. Pepper/ Snapple and proved well-used and accepted by the public ultimately kicking off BREC's first phase of public recycling bin installation in 2016.

City Park Lake is a conservation management unit and an integral part of the University Lakes Master Plan Project. A heavy sediment load and pollution have resulted in heavy vegetation growth and algae blooms requiring management action. Both BREC staff and consultants have worked diligently to create a plan to keep the lake healthy and dredging operations should commence in 2023.





# FOREST COMMUNITY PARK

Forest Community Park is in the southeastern portion of East Baton Rouge Parish. Previously a neighborhood park, it received major renovations to transform it into a Community Park as part of the first Imagine Your Parks strategic plan. The new features included picnic pavilions, a Raising Canes dog park, fishing pond, trails, community playground, and splash pad.

The focus in IYP2 was reimagining the outdated recreation center, as the existing center was built in the 1970's, and the gym was not air conditioned. The renovation was part of a BREC initiative for updating its most heavily used recreation centers to include air conditioning, creating new quality programming space that meets the needs of the community. In addition to energy saving improvements, the updated recreation center offers over 4,000 square feet of additional space. That new space includes up to date restrooms, a new entry lobby and reception area, new offices, new storage space, and four new programming areas.

Additional smaller projects focused on restoring natural habitat and improving nature trails. In 2021 an old access road was planted to restore the natural landscape in the rear of the park. A much-needed footbridge was constructed to allow ease of access to nature trails and a native plant pollinator garden was expanded near the pond.

As the namesake for this park suggests, the forests are a treasured resource, and a concerted effort was made to allow the public to experience these habitats and provide recreational outlets within them. To accommodate this, primitive hiking trails were installed to allow for self-guided hikes and BREC-led nature programming. To enhance the experience, interpretive signage was added to educate the public on the resources within the park, and later, elevated boardwalks were installed to allow use even during wet seasons. As a conservation management unit, it was important that the public be engaged in maintaining the resource, so restoration efforts to remove invasive species were completed with the help of community volunteers.

## PROJECT DATE

- 2015: Tree Planting
- 2018: Rec Center Addition + Renovation

## NATURAL RESOURCE MANAGEMENT PROJECTS:

- 2015 Primitive Hiking Trails Est.
- 2017 Native Plant Pollinator Garden
- 2019 Hiking Trail + Interpretive Signage
- 2020 Ardisia Removal Project
- 2021 Poplar Pine Loop Trail
- 2022 Recycling Bins Installed, Old Oak Trail Boardwalk, Bioblitz, Invasive Species Removal
- 2023 Forest Restoration Planting





# GREENWOOD COMMUNITY PARK

Greenwood Community Park features many amenities for the whole family from golf, canoeing, community playground and splash pad to visiting the Baton Rouge Zoo. Each are separate destinations in Greenwood Community Park. BREC's vision is to change this perception by creating a park that entices visitors into the heart of the recreational space that reveals grand gateway.

In 2019, BREC hired a world-renowned design team of Sasaki, park designers and Torre Design Consortium, zoo designers, to lead the effort of reimagining Greenwood Community Park and the Baton Rouge Zoo as one cohesive destination park.

During the master planning process, BREC and the design team conducted public meetings and input surveys across the parish. The master planning process culminated with a large "Party-in-the-Park" event in August of 2019 where the master plan was unveiled. The resulting master plan represented a broad community consensus and support around a Phase I design that will include roughly \$40 million in BREC funded improvements for the park and zoo.

Phase I site improvements are constructed by the Lemoine Company through the State's Construction Manager at Risk (CMAR) delivery model – allowed for projects that exceed \$15 million. Lemoine is targeting a 30% level of disadvantaged business entity (DBE) subcontractor participation. This first phase aims to achieve the master plan's guiding principles to ensure that this first investment made sets up the Park and Zoo for long-term success.

## ALSO AT GREENWOOD

### BATON ROUGE ZOO

See Section: Special Use Parks + Facilities

### J.S. CLARK MEMORIAL GOLF COURSE

See Section: Special Use Parks + Facilities

### GREENWOOD GREENWAY

See Section: BREC Greenways + Blueways

## PROJECT DATE

- 2015: Greenwood Community Park \$960k Transportation Alternatives Grant [Commission Approval]
- 2015: Adult Fitness Equipment, Digital Entry Sign, Watershed Signage Install
- 2015: Alternative Uses Study and Zoo Survey
- 2015: Watershed Clean-up Project Keep Louisiana Beautiful Grant (NRM)
- 2017: Cypress Bayou Bridge Replacement
- 2018: Bioblitz (NRM)
- 2019: Greenwood Community Park + BR Zoo Master Plan
- 2020: Expansion Of Waterfront Bldg
- 2020: Schematic Design For Greenwood/ Zoo Phase 1
- 2020: Selection of Construction Manager at Risk (CMAR) for Greenwood/Zoo Phase 1
- 2021: Greenwood/Zoo Phase 1 DD + CD's, Construction of Phase 1
- 2022: LWI Cypress Bayou Green Infrastructure Project Commences
- 2024: Greenwood & Zoo Phase 1





# GREENWOOD COMMUNITY PARK

*Continued*

## CONSERVATION MANAGEMENT UNIT:

Greenwood Community Park is a unique site which is not only BREC's largest park but also hosts BREC's second largest lake in the system. The Lake and surrounding forested land are conservation management units and this watershed provides necessary ecosystem services to the public like stormwater storage. The Cypress Bayou Green Infrastructure Project which received funding through the Louisiana Watershed Initiative will enhance these services ultimately increasing its capacity to serve the surrounding neighborhoods

in that way. The Greenwood Lake watershed is a crucial part of stormwater management in Baker, LA and receives runoff from surrounding communities. Public engagement and cleanup projects have been done to reduce non-point source pollution and litter entering the lake which included adding interpretive signage in the park and painting murals at the local branch library through a grant funded by Keep Louisiana Beautiful.





# HIGHLAND ROAD COMMUNITY PARK

Highland Road Community Park underwent renovations in 3 phases, focusing on different segments of the park. Phases 1 and 2 were completed in the first IYP program. The site improvements included the re-surfacing of existing tennis courts and constructing five new courts. The parking lots near the recreation center were renovated with additional parking added. Phase 2 encompassed a new grand lawn for entertainment venues that features a large pavilion, a walking promenade with benches and new parking area.

Phase 3 renovations were completed in IYP2 consisting of a new community playground and splash pad constructed near the recreation center featuring new modular restrooms, lighting, and seating area. In addition, the recreation center was renovated. Improvements consisted of a new recreation center roof, additional meeting rooms and a new central air system that also incorporates the existing gymnasium.

In 2018 playground shade sails were added to the shelter kids at play. The existing disc golf course was identified for improvements in 2017 and a public input survey and meeting was held to help guide the design of the course. The enhanced 18-hole disc golf course was reopened to the public in 2020.



## PROJECT DATE

- 2015: Attendant's Hut (Added Project)
- 2015: Playground, Splash Pad, Rec Center, Youth Tennis Courts
- 2017: Public Input Survey For Disc Golf, Canoe/Kayak Launch For Bayou Fountain
- 2018: Playground Shade Sails, Disc Golf Public Meeting
- 2020: Disc Golf Course, Observatory Residence Demolished

## CONSERVATION MANAGEMENT UNIT:

The conservation management unit on the south side of Highland Community Park borders Bayou Fountain and the forested area is one of the only locations in the BREC system which allows patrons to experience the drastic elevation change of the Highland Escarpment. To facilitate this experience, primitive hiking trails were added and bridges installed for access across the multiple drainages flowing into the bayou.

## ALSO AT HIGHLAND

### HIGHLAND OBSERVATORY

See Section: Special Use Parks + Facilities

### HIGHLAND/BAYOU FOUNTAIN BLUEWAY LAUNCH

See Section: BREC Greenways + Blueways



# HOWELL COMMUNITY PARK

Howell Community Park underwent major expansion after the National Golf Foundation evaluated BREC's golf operations and recommended that the golf course be repurposed for other use. Public engagement helped BREC to gain insight on the community's vision for expanding the park.

The historic 2016 flood inundated the site with more eight feet of water, making it the most severely damaged park in the BREC system, causing major structural and electrical damage.

BREC moved forward with Phase 1 renovations after the flood; improvements consisted of a new fishing pond, lighted basketball courts, new driveways and parking, a multi-use athletic field, improved pedestrian bridges, pavilions and picnic areas with grills, and an adventure playground.

BREC entered a CEA with the Walls Project Urban Art Farm at Howell. The 4-acre Baton Roots Community Farm features raised gardens and tractor farming. The aim is to provide fresh food access in food deserts as well as improve the quality-of-life for the community.

Working with FEMA, the flood damaged gymnasium, pro shop and rec center were demolished. This gave way to reimagining a new facility, and in 2020 construction began for a new community recreation center and pool.

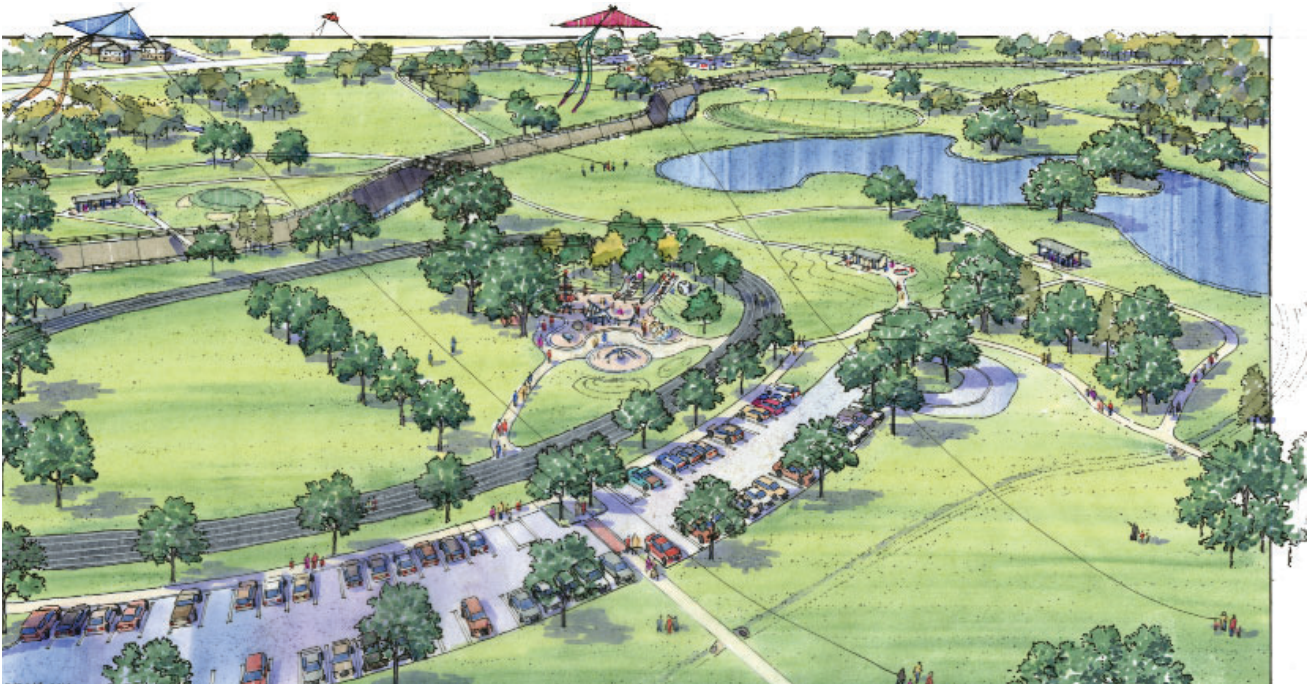


## PROJECT DATE

- 2015: Community Engagement, Commission Approval of Closing Howell Golf Course/Repurposing Site, Parking Lot Asphalt Overlay, Speed Hump Replacement, Tree Planting
- 2018: 1st Tee Facility, Golf Course Repurposing Phase 1
- 2018: Gym + Pro Shop Demo (FEMA)
- 2019: Fitness Court, Urban Farm
- 2020: Rec Center Abatement + Demo
- 2024: Rec Center + Pool Construction
- 2024: New LED Sport Field Lighting

## NATURAL RESOURCE MANAGEMENT PROJECTS:

- 2018 Native Pollinator Garden, Phase 1 Grow Zones Seeded
- 2018 Baton Roots Community Garden + Baton Rouge Green Citrus Grove Partnership Kick-off
- 2020 Phase 2 Grow Zones Seeded, Native Pollinator Garden Expanded
- 2021 First Prescribed Burn in Grow Zones
- 2023 ADA pathways and kiosk installed at Native Plant Pollinator Garden
- 2023 Dry retention Areas Seeded + Planted



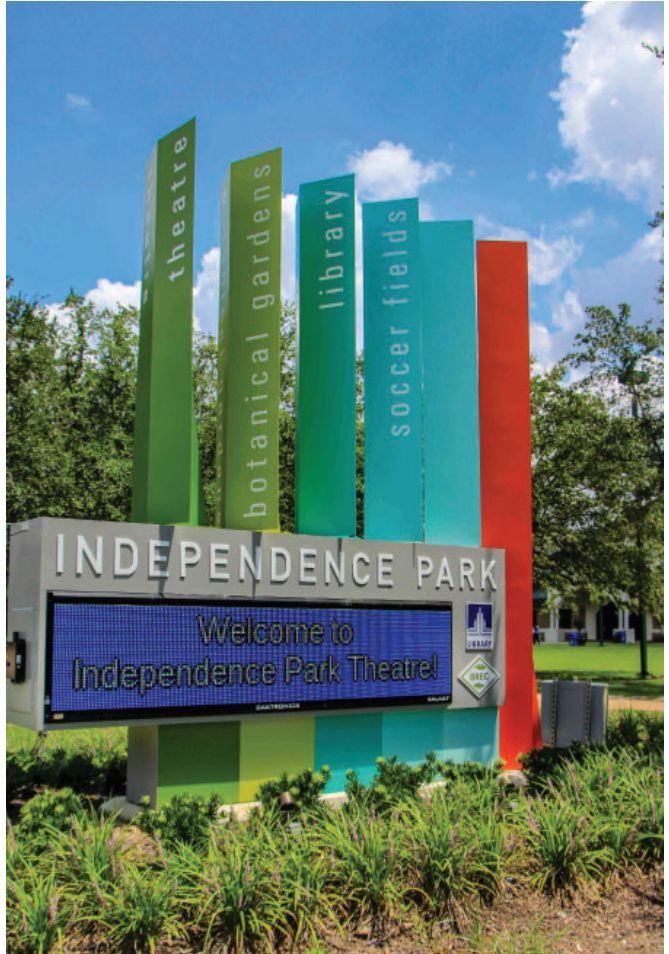
### CONSERVATION MANAGEMENT UNIT:

The transition from golf course to community park required new resources and strategies to manage such a large park that was historically all mowed. To help reduce the mowed acreage, increase biodiversity, reduce erosion, and help manage stormwater within the park, 5 acres of native grass and wildflower grow zones were incorporated into the park design. Additionally, to educate patrons on the importance of native plants and enhance the habitat for pollinators, a native plant pollinator garden was installed with the help of the neighboring school and volunteers.

This garden is now the largest managed example garden of native plants in the parish and there are plans to expand.

Howell Community Park is a great example of adaptively managing resources and engaging the public. The fishing pond is stocked for recreational fishing and periodically hosts large-scale fishing tournaments in a part of the community which historically would have had to travel large distances to have a similar outdoor recreation experience.







# INDEPENDENCE COMMUNITY PARK

Many renovations have recently taken place at Independence Community Park, including the “front gate” of the Botanical Gardens, the EBRP Main Library, the Independence Café, and several gardens.

In 2017 Playground & Picnic Area renovations were completed, replacing the 1970’s play equipment. The renovation features outdoor fitness equipment, a large pavilion for rentals, two smaller picnic pavilions, new picnic areas, and site furnishings. The new design increases the open space for the area allowing for more recreational opportunities.

The Garden Center was renovated 2018, and a new Volunteer Building was constructed to provide a support building for garden volunteers and Independence Theatre staff.

BREC is currently in the fundraising phase for a new universally accessible playground to be located between the Independence Tennis Center and Liberty Lagoon.



## PROJECT DATE

- 2015: Botanic Garden New “Front” Entrance / Awning / Fencing
- 2015: Café Building: TV, data, shelving fence, walk; Liberty Lagoon: Attendant’s Hut; Library connections + Catch Basins; Sodding of Parking Lot Islands
- 2015: Theater Parking Lot
- 2016: New & Improved Parking Lots
- 2017: Public Recycling Bins (NRM)
- 2017: Botanical Garden Phase I Expansion
- 2017: Botanical Garden Phase I Planting
- 2017: Blvd Turning Lane at Rec Center
- 2017: New Playground + Picnic Area
- 2018: Botanical Garden Branding Signage
- 2018: Digital Entry Signs
- 2018: Garden Center Renovation/ Addition
- 2018: Maintenance/Volunteer Building
- 2019: Tree Survey (NRM)
- 2022: Liberty Lagoon: Line Queues + Building Improvements
- 2024: Universally Accessible Playground Master Planning

## ALSO AT INDEPENDENCE

### **BATON ROUGE BOTANICAL GARDENS**

See Section: Special Use Parks + Facilities

### **LIBERTY LAGOON AQUATIC CENTER**

See Section: Special Use Parks + Facilities



# JACKSON COMMUNITY PARK

During IYP1, Jackson Park was selected to become a community park in the City of Central. The master planning process continued into the IYP2 program, then public engagement helped guide site enhancements to transform the park into a community park. Initially, a splash pad and prefabricated restroom was constructed behind the existing recreation center.

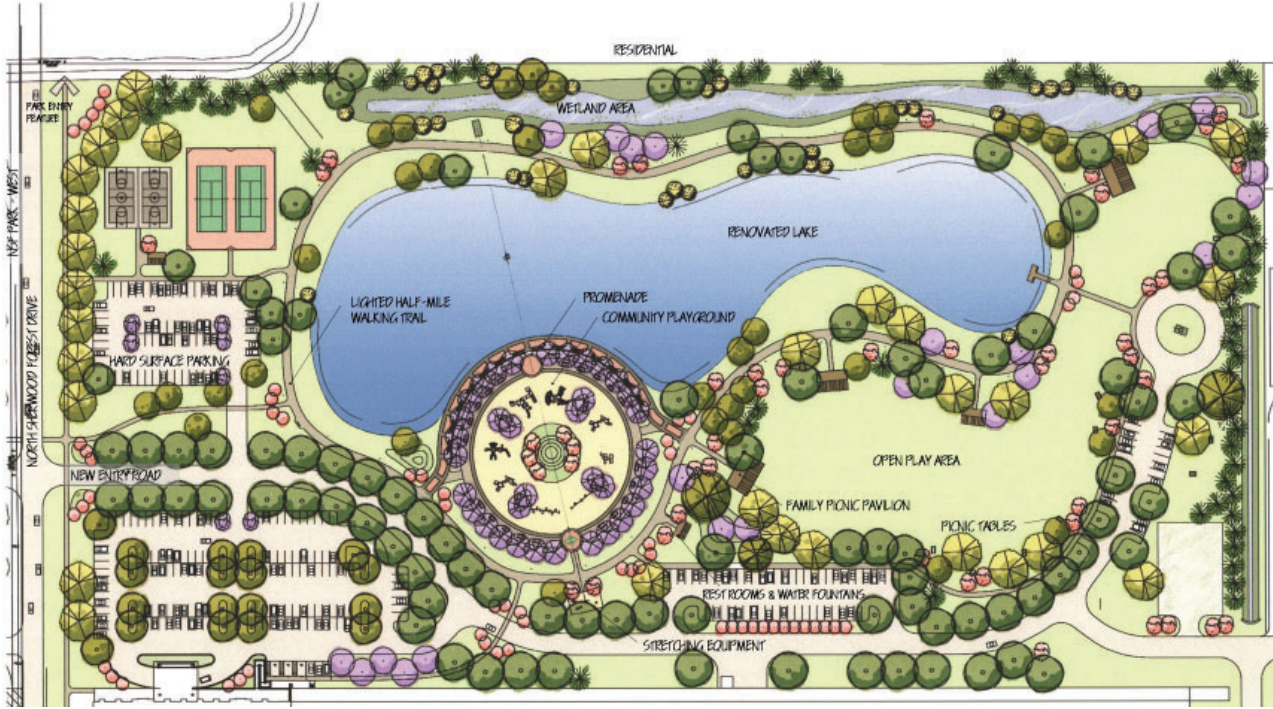
In 2020 construction began, with Phase 1 consisting of a new lighted parking lot and drop-off area, stormwater management features, a walking trail, fitness equipment, and new planting. Phase 2 consisted of a new community center, playground, shade structures, and open green space with additional lighting, planting, and stormwater management features.

The renovations to the existing Jackson Park will create a lively and engaging community park site and facility for users of all ages.

## PROJECT DATE

- 2017: Public Engagement
- 2018: Design Development + Site Improvements
- 2020: Site Improvements Phase 1
- 2021: Site Improvements Phase 2





# NORTH SHERWOOD FOREST COMMUNITY PARK

North Sherwood Forest Community Park has undergone major site improvements to complete the transformation of this active park. The park's military history is celebrated throughout the design of the park elements, as it was once named the Federal Sharp Station Depot, which was used during World War II. Remaining elements included a fire house, water towers, carpentry shop, offices, housing barracks, and an ammunition warehouse. In 2015 multiple buildings that were no longer viable were abated and demolished.

The existing 2.6-acre pond has been enlarged to 3.4-acres, deepened to 12 feet in some locations, and reshaped to create a dynamic fish habitat. A wetland system has been constructed to filter the majority of stormwater that flows through the site. Native wetland plants aide in water filtration as well as create habitat for butterflies and other important pollinator species. Along the wetland area is a boardwalk, pavilion, and fish cleaning station. The pond is encircled by a half-mile lighted walking loop.

A promenade brings you to main activity area overlooking the pond. The new community playground and splash pad are centered around the America flag, with the seals of the five branches of the United States Armed Forces inlaid in the splash pad surface. Radiating out from the center of the splash pad is seating shaded by a custom trellis system that will train sycamore trees into a unique shade structure as they grow. Children and adults can enjoy an enclosed sand play area. Four pavilions are located around the lake, the largest of which will be available for party rentals. The addition of a Welcome/Restroom building, outdoor fitness equipment, and nearly 200 newly planted trees round out this fabulous new destination.

The 138-acre site not only features a new activity hub, large community center and warehouse space, but also houses BREC Maintenance facilities at the rear of the park. In 2021 a new CCD Administration Building was constructed as part of the BREC maintenance facilities.

## PROJECT DATE

- 2015: Military Bldg Abatement + Demo
- 2016: DD + CDs Completed
- 2017: Warehouse Roof Replacement
- 2018: Completion of Site Improvements
- 2021: CCD Administration Building
- 2022: Pond Erosion Control + Native Planting Project (NRM)





# PERKINS ROAD COMMUNITY PARK

Perkins Road Community Park is BREC's "Extreme Sports Park." Amenities include a skate park, BMX Raceway, community and toddler playgrounds, tennis and sand volleyball courts, and recreation center.

As part of the BREC Greenway initiative to develop multi-use pathways throughout the Parish, a section of pathway and a trailhead were developed along Dawson Creek at Perkins Community Park and continues to Quail Drive near the Pennington Biomedical Research Center. The trailhead at Perkins provides an access point to the Greenway that features an outdoor exercise zone with multiple fitness stations, fountain with mister and dog bowl, electric tire pump, bike rack and site furnishings.

An existing older restroom structure was replaced in 2022 with a new ADA compliant prefabricated restroom, which was relocated closer to the new trailhead and the toddler playground.



## PROJECT DATE

- 2015: Tree Planting
- 2016: Greenway [Connectivity Trail]
- 2016: Fitness Station on Greenway
- 2022: New Prefabricated Restroom
- 2024: Development of Master Plan

## NATURAL RESOURCE MANAGEMENT PROJECTS:

- 2018: LDWF Pond Fish Habitat Enhancements
- 2018: Public Multi-stream Recycling Bins
- 2021: Native Planting Pond Enhancements

## ALSO AT PERKINS:

### OLYMPIA FIELD

See Section: Special Use Parks + Facilities

### PERKINS EXTREME FACILITIES

See Section: Special Use Parks + Facilities

### DAWSON CREEK GREENWAY

See Section: BREC Greenways + Blueways





**CONSERVATION MANAGEMENT UNIT:**

The Park is 386 acres of mixed hardwood and bottomland hardwood forests, bordered along the northeastern edge by Sandy Creek. A large portion of the park includes high quality forested wetlands with meandering streams and mature canopy trees. The remaining portion of the park nearest the parking area which includes the existing mowed pathways is early successional forest with predominantly new growth due to historical logging operations. The acidic sandy loam and clay soils are suitable habitat to restore the longleaf pine ecosystem which historically would have been in the northeast corner of the parish.

Long-leaf pine is considered a rare and threatened natural community in Louisiana which relies heavily on prescribed fire for its health and this site provides a unique opportunity to restore it.

Since the park was opened to the public, a primitive hiking trail was installed for a more intimate forest hiking experience. This trail was installed with directional signage and winds along the creek with bluff overlooks and meanders through several different habitat types.



# SANDY CREEK COMMUNITY PARK

Sandy Creek Community Park is in the northeast portion of East Baton Rouge Parish. The unique habitat of the park provides an experience different from BREC's other Community Parks and allows for a wide range of outdoor activities. The park currently offers great opportunities for wildlife viewing, horseback riding, hiking, and biking on 3.9 miles of trails.

Construction to provide access to the Community Park for primitive use was completed in 2015. The entry drive was widened to provide citizens with a trailer hitch access to bring their horses to ride the trails. A new permanent park sign marks the entrance and maintenance gates installed at the park entrance and at the trailhead.

BREC's Natural Resource Management team has played a vital role in habitat assessment and development of primitive hiking trails with wayfinding signage that is harmonious to the natural environment.

Planning is underway for further development. The focus is to obtain a high-level concept master plan for the creation of a Community Park. The master plan concepts will consider recommended programming from BREC's Recreation staff, feedback from community engagements, and analysis of the site's topography and natural systems, so the plan is informed by good environmental science and design.

## PROJECT DATE

- 2015: Site Access for Primitive Use
- 2024: Bridge Replacement
- 2024: Master Plan Development

## NATURAL RESOURCE MANAGEMENT PROJECTS::

- 2017: Sandy Creek Primitive Hiking Trail
- 2017: LDWF Natural Heritage Assessment
- 2018: Primitive Hiking Trail Signage





# ZACHARY COMMUNITY PARK

In 2016 a new community play area and splash pad at Zachary Community Park were opened to the public. The playground is centered on a “Mega Tower” play unit with three stories of fun and adventure. Surrounding this tower are plenty of shady places to sit and picnic under one of four pavilions or under a tree. There are belt swings, tot swings, and inclusive swings, as well as an inclusive merry-go-around and a net climber.

Fitness stations can be found at beginning of the existing walking jogging trail that wraps the fishing lake. The splash pad area consists of 1,230sf of spray area and 1,275sf of dry deck area. Amenities include a new steel custom gable-end pavilion, a steel custom hip pool equipment pavilion, decorative concrete paving and fencing, site furnishings, landscaping, and lighting complete this community park.

## PROJECT DATE

- 2015: New Playground + Splash Pad
- Natural Resource Management Projects:
- 2017: Young Forest Primitive Hiking Trail Loop Established
- 2017: Native Plant Bioswale Planting
- 2021: Bioblitz + Invasive Species Survey
- 2022: Americana Trail Connection + Boardwalk
- 2022: Public Multi-stream Recycling Bins



## CONSERVATION MANAGEMENT UNIT:

Zachary Community Park is unique in that it includes a forested track of bottomland hardwood and small stream forest in area that historically was cleared for agriculture. This provides the opportunity for the public to experience this resource through the creation of a primitive hiking trail which meanders through pine and bottomland hardwood forests and along a stream.

The trail includes directional signage and has been used for guided night hikes and was a highlight during the 2021 Bioblitz event.

The trail now serves an even larger community after it was connected to the Americana subdivision through a trail connection consisting of a 6' wide limestone pathway and wooden boardwalks which cross over the wetlands.

To add to the outdoor recreational opportunities at this park, the pond is stocked for recreational fishing and periodically hosts large-scale fishing tournaments.



SPAIN STREET PARK