

EXPRESSWAY PARK

Expressway Park has experienced many renovations over the past several years. The Park now offers many exciting amenities including interior renovations to the recreation center, a picnic pavilion, and a portion of the Downtown Greenway. The Greenway was made possible through an agreement with the Downtown Development District for funds from RTP Grant to build the first and second phase of the multi-use pathway that passes through Expressway Park. BREC lighted the basketball court that was then resurfaced through funds generosity donated by Walk-On's. It now features fitness equipment installed at myrtle street trailhead and lighted football practice field.

In 2021 a master plan and phase 1 improvements DOTD Project 107 were underway.

PROJECT DATE

- 2015: Downtown Greenway + Site Improvements Phase 1 + 2
- 2015: Walk On's Basketball Court
- 2016: Ballfield Improvements + Lighting
- 2021: Master Planning And Phase 1 Improvements DOTD Project 107
- 2021: Park ID Signs + Amenities
- 2022: Tree Survey (NRM)



FAIRFAX PARK

Fairfax Park is an undeveloped parcel that is tucked away in the Melrose Place residential area. The site is bordered by three neighborhood streets and features a large flagpole in the center. The recreational passive green space is dotted with mature shade trees that provides area residents public space to enjoy a with family and friends. In 2024 a new kiosk was installed for area residents and the Melrose Civic Association to post information.



FIESTA PARK

Fiesta Park is located in the Villa Del Rey area. Improvements to the neighborhood park include new accessible walks, a new picnic pavilion, site furnishings and outdoor fitness equipment.



PROJECT DATE

- 2019: Site Improvements



FLANCHER ROAD PARK

Flanacher Road Park is located in the northwest portion of East Baton Rouge Parish. In 2018 the recreational site featuring soccer fields and recreation center received new entry drive lighting and new park signage. In 2019 a new prefabricated restroom was installed near the playground and basketball court.

In 2024 repairs were made to the recreation center that included a new HVAC system.

PROJECT DATE

- 2018: Entry Drive Lighting + Park Sign
- 2019: New Prefabricated Restroom
- 2024: Building + HVAC Repairs



FLANNERY ROAD PARK

In November 2012, BREC staff joined volunteers from Humana, KaBOOM, neighborhood residents and community groups to build a new playground. Then in April 2013 Flannery Road Park underwent a master planning process for park renovations. BREC hosted a community open house at the recreation center to give residents in the area a voice in the creation of a master plan. Additionally, the State has added funds to the project increasing the overall renovation budget. Improvements include paved parking with additional ADA parking spaces, neighborhood connector pathways, a walking loop, a sand volleyball court, and a new playground appropriate for 2–5-year-old to play.

In 2019 a new prefabricated restroom was installed near the playground and multi-use fields.

PROJECT DATE

- 2012: Kaboom! Playground Project
- 2012: Recreation Center Partial Re-roofing Project
- 2014: Phase 1 Site Improvements
- 2019: New Prefabricated Restroom



FORTUNE ADDITION PARK

Fortune Addition Park is located at the end of Peerless Street, in Zion City, east of Plank Road. An online public input survey was conducted in 2019 to help guide site enhancements. Site improvements include a new playground, site furnishings and an accessible walking loop that links park amenities together throughout the recreational site.



PROJECT DATE

- 2019: Public Input Survey Conducted
- 2021: New Playground + Site Improvements



FORTY-EIGHT ST PARK

Forty-Eight Street Park improvements in 2012 included the removal of an obsolete structure, clearing overgrown vegetation encroaching on the basketball court and ball field areas. A sand volleyball court was put in along with new benches, picnic tables and a grill for family picnics.

PROJECT DATE

- 2012: Site Improvements

GAYOSA ST PARK

Gayosa St Park is near North 22nd Street and North Street. The small pocket park features a picnic pavilion, playground, and basketball court. In 2014, the recreational site received site improvements. BREC partnered with The Walls Project to commission a colorful mural in the park. A community mural paint day was held. Area residents of all ages came together to lend a helping hand and assisted the local artist in the beautification project.

In 2024 a new playground was installed with accessible walk and new site furnishings.

PROJECT DATE

- 2024: Site Improvements



GENTILLY COURT PARK

Gentilly Court Park is tucked away in Perkins Village subdivision. The six-acre site features a large open recreational space to run around and an existing tennis court with a half basketball court. In 2015, a new playground was installed featuring a double bay arch swing and a play unit. It has a perimeter walk that links to the community sidewalk for ease of access.

PROJECT DATE

- 2015: New Playground + Site Improvements



GOODWOOD PARK

Goodwood Park is located in the Mid-City area between Government Street and Goodwood Avenue. A shade and beautification project were sponsored by the Goodwood Property Owners Association and Lauren Savoy Olinde Foundation in 2016. The shade structure was installed over the existing playground to shield children from the sun while at play. Additional site improvements include accessible picnic tables with concrete pads, tree planting, a new bike station with bike racks and a new drinking fountain with bottle filler located under the picnic pavilion.

PROJECT DATE

- 2016: Shade + Beautification Project
- 2017: New Site Furnishing
- 2018: New Bike Station + Drinking Fountain With Bottle Filler
- 2020 Tree Survey (NRM)
- 2022: Playground Addition



GREENWELL SPRINGS PARK

Greenwell Springs Park is located in the southern part of the City of Central just off Greenwell Springs Road. The 13-acre site features majestic Live Oak trees along the roadway and an equestrian arena area to the rear of the park which received renovations in 2016. There were improvements to the large pavilion, new arena seating and renovated restrooms.

In 2021 an online public survey was conducted to gain feedback from area residents for future development of the ball field and play area. A master plan was designed, and improvements were completed in 2022. The activity area site drainage and pedestrian circulation around the baseball backstop was improved, new ADA parking and accessible walks now connect the ball field and parking area to the new playground. Additional picnic seating under the Live Oak trees provide a shady gathering space for families while enjoying the park.

PROJECT DATE

- 2016: Arena Area: New Restrooms + Site Improvements
- 2022: New Playground + Ball Field Area Improvements
- 2021: Tree Survey (NRM)



GUS YOUNG PARK

Gus Young Park is a heavily used neighborhood park that received major upgrades to its recreation center. New features include new storefront windows, entire roof replacement, and heat and air conditioning for the gymnasium. Additional improvements include a new scoreboard, gym doors, bleachers, and new flooring. A new addition to the facility totaling 1,348 square feet includes an office, side room for programming and two new storage closets. BREC has also updated features including exterior lighting, building entrance, restrooms, stage entrance and food prep areas. Additionally, the center's lobby has been updated with new gaming stations and seating.

PROJECT DATE

- 2015: Parking Lot Asphalt Overlay + Striping
- 2017: Recreation Center Addition + Renovation With New Gymnasium A/C



HAMILTON AVENUE PARK

The recreational site is located on Hamilton Avenue east of Central Thruway. It features a playground area and a picnic pavilion. As with much of the area, the recreation center took on water in the great flood. The process to restore the recreation center took some time to complete. The project began with flood abatement and remediation, then the recreation center received new paint throughout the building, restrooms were refurbished, and new LED lighting installed.

PROJECT DATE

- 2020: Recreation Center Flood Repair Complete



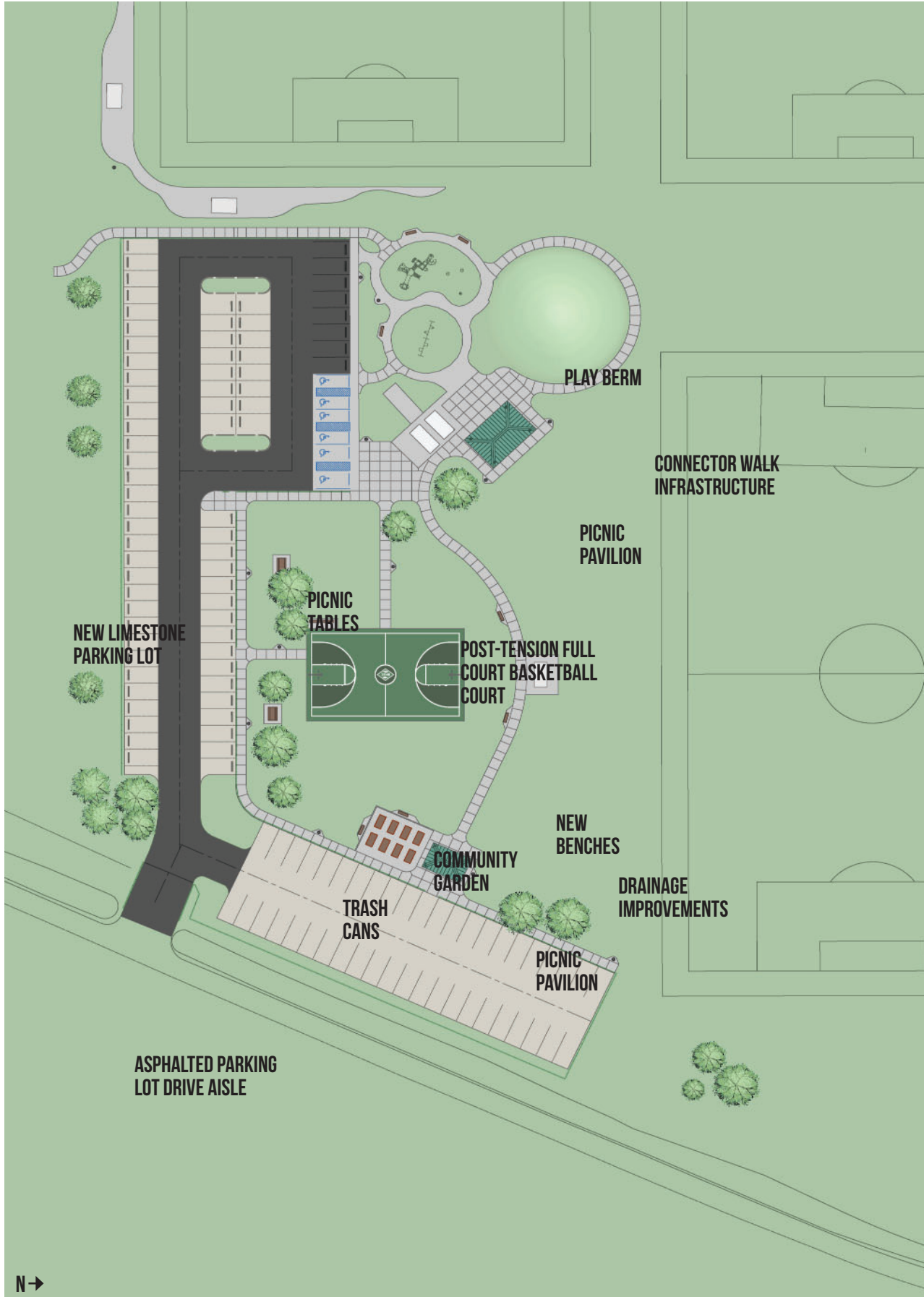
HARDING STREET PARK

Harding Street Park is located in the City of Baker. Site improvements include improved parking area with new ADA parking spaces. The tennis court and baseball backstop were refurbished, new site furnishings and the existing concession building was re-purposed into an open pavilion.

PROJECT DATE

- 2015: Site Improvements





HARTLEY/VEY PARK AT GARDERE

Hartley/Vey Park at Gardere has undergone many renovations over the past several years. In 2015, BREC received a \$15K playground grant from KaBOOM. The community-based organization organized a build day for volunteers to assemble the play equipment. A neighborhood grass roots organization helped rally support.

In 2018 Phase I Site Improvements were completed that feature new pavilions, basketball court, community garden, a new programming space for Front Yard Bikes, improved parking lot and improved site drainage. A new prefabricated restroom was installed, then Phase II Site Improvements and Walking Loop was launched.

PROJECT DATE

- 2015: New Playground
- 2018: Phase I Site Improvements
- 2019: New Prefabricated Restroom
- 2020: Phase II Site Improvements + Walking Loop





HOOPER ROAD PARK

The 233-acre recreational site is located north of Hooper Road near the intersection of Mickens Road in the Sharon Hills area. Facilities include a recreation center, tennis courts, two lighted ball fields, and picnic facilities. The Park also features five miles of mountain biking and hiking trails that winds through the woods.

There have been several enhancement projects at Hooper beginning with a master planning process for park renovations. In 2015, BREC held a community forum to gain input from citizens for the proposed redevelopment of Hooper Road Park. Plans were then developed, and the site improvements consist of improved restrooms, a new centrally located playground, and site furnishings. A new walking loop and accessible walks now link amenities together.

Additionally, in 2019 a new trail was established to allow for better access. The new entrance shifted the trail to allow hikers and bikers immediate access at the trailhead opposed to the ¼ mile of trail previously in the open field. During construction, bog bridges were erected over wet areas to keep bikes out of the mud and accessible during more of the year.

In 2019, BREC hosted the Bioblitz at Hooper Road Park and a total of 436 different species were recorded over 2 days. For the first time at this park, schools were invited to attend the Friday surveying activities. To increase diversity in the park, starting in 2018, Natural Resource Management staff worked with LSU's Coastal Roots program to plant native tree saplings in a restoration area within the park. Every year schools return with trees they have grown from seed and 30-100 students plant the species.

PROJECT DATE

- 2015: Park Restroom Renovation
- 2015: Community Input Planning Meeting
- 2017: Recreation Center Roof Replacement
- 2017: New Playground + Site Improvements
- 2018: Coastal Roots Plantings (NRM)
- 2019: Bioblitz (NRM)
- 2019: New Entry Spur Trail with Bog Bridges
- 2020: New Trail Signage Kiosk
- 2020: ATV Bollard + Gates Installed (NRM)



HUNTERS POINT DR PARK

Hunters Point Park is a small undeveloped site located in the Hunters Point subdivision.

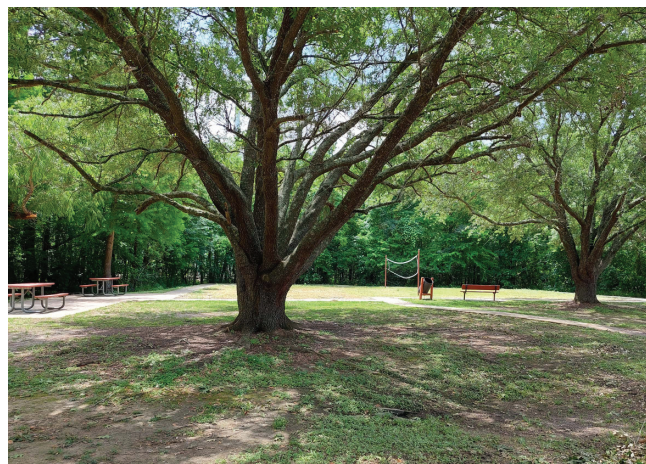


INDUSTRIPLEX PARK

Industriplex Park is located off of Siegen Lane near The Hidden Oaks at Siegen apartments. In 2015 portion of the playground was converted into a sand volleyball court.

PROJECT DATE

- 2015: Site Improvements



JAMES WATSON PARK

Located in the Brownfields area near Foster Road. Amenities include a multi-purpose field, a tennis court and open passive space. In 2015, a community meeting was held to plan the renovations for James Watson Park. Participants were asked if they preferred additional amenities throughout the park or focus Park funds to install a new Airnasium. The original structure covering the basketball court was removed due to age and structural problems in 2013. The response was to have a new Airnasium at their park.

PROJECT DATE

- 2015: Public Planning Meeting
- 2018: Replaced Airnasium





JEFFERSON HIGHWAY PARK

The transformation of Jefferson Highway Neighborhood Park began in 2011 when two of the original asphalt tennis courts were converted into two new sand volleyball courts complete with bleachers, a foot washing station, and a new drinking fountain. In 2013, demolition began to make way for major site improvements. This preparatory phase included the removal of the original swimming pools, two small buildings and shelters and a portion of the existing recreation center. Other miscellaneous site amenities were removed and site drainage was improved.

With the site cleared, the exciting new outdoor event and play space was ready to be constructed in 2014. This phase of improvements included a reception plaza with a new pergola structure, architectural lighting, landscaping, seating, and a new playground.

The Community Center was renovated in 2016. The dated building and other ancillary facilities, once the Piedmont Club, received extensive improvements including new program spaces and a large event space ideal for many events such as weddings, receptions, conferences, and community gatherings. The parking lot and driveway received a full asphalt overlay at the end of 2016.

This marathon project concluded with the transformation of the existing tennis courts. The courts were resurfaced free of charge by Quality Court Industries, LLC as part of a partnership to improve several tennis courts around the Parish.

PROJECT DATE

- 2016: Community Center Renovation Complete
- 2016: Parking Lot + Driveway Asphalt Overlay
- 2016: Resurfaced Tennis Courts



JEFFERSON ST PARK

Jefferson Street Park was renovated in 2010. Improvements include renovations to the existing restroom, practice football field, and multi-use court. A new limestone parking lot was constructed near the park entrance and the rear parking lot was gated off to improve site visibility. Picnic facilities were added along with connecting walkways from the parking lot to the picnic and restroom facilities.

PROJECT DATE

- 2010: Site Improvements

JEFFERSON TERRACE PARK

A master planning process was conducted in the first Imagine Your Parks strategic plan. A series of public meetings held, and phases I and II were constructed, consisting of a walking path, playground, site amenities and the parking area was resurfaced. Phase III site improvements were completed in 2017 consisting of a walking path extension to create a full walking loop approximately 1/4-mile, improved site drainage, additional park benches and new outdoor fitness equipment.

PROJECT DATE

- 2017: Walking Loop Extension



KATHY DRIVE PARK

Kathy Drive Park underwent a master planning process for park renovations in 2013. A conceptual master plan was presented to the public showing potential site enhancements throughout the park. In 2015 the planning and design development was underway and in 2016 master plan for Kathy Drive Park was approved by the BREC Commission. In 2017 a grand opening was held to celebrate new amenities including new access drive, improved parking, and a new walking loop. Additional features include a new picnic pavilion, sand volleyball courts and a new playground.

PROJECT DATE

- 2017: Site Improvements
- 2024: New LED Sports Lighting



KERNAN AVE PARK

Kernan Avenue Park is in the Mid-City area and features a recreation center, playground, and outdoor basketball court. Improvements to the recreation center include new tempered glass backboards with breakaway rims for the indoor basketball court, updated light fixtures, and renovated restrooms. Additional improvements include improved site drainage, new water fountain near the playground and improved parking area.

PROJECT DATE

- 2013: Recreation Center Renovation
- 2022 Tree Survey (NRM)

KERR WARREN PARK

Kerr Warren Recreation Center interior was freshened up with new paint and new resilient flooring. The Walls Project Neighborhood Reactivation Program in a joint project with BREC hosted a Community Mural Painting Day. The project was a commissioned installation of artwork in the gymnasium. Area residents collaborated with artists to develop the artwork and participated in the Community Mural Painting Day.

PROJECT DATE

- 2015: Recreation Center Renovation
- 2018: Community Mural Painting Day



KOLBY PARK

The small neighborhood park is in the Central Place subdivision, just off Sullivan Road. It features a picnic area, and a half basketball court.

In 2024, Kobly Park received site improvements that include accessible walks to the improved picnic area and to the new playground with engineered wood fiber safety surfacing. The park now features a new park sign along the roadway inviting all to play.

PROJECT DATE

- 2024: New Playground + Site Improvements



LAFITTE DRIVE PARK

Lafitte Drive Park is located south of Florida Boulevard in the Donwood subdivision. An online public input survey was conducted and information from the survey aided BREC in designing a park to meet the needs and wishes of the community.

Site improvements include a new playground featuring play units for children ages 2 to 12 with engineered wood fiber playground safety surfacing. A new picnic shelter, site furnishings, ADA compliant connector walks, and a new ADA accessible drinking fountain was installed.

PROJECT DATE

- 2019: Online Public Input Survey
- 2022: Site Improvements



LAFITTE HILL PARK

As part of the Imagine Your Parks strategic plan, BREC conducted a thorough efficiency evaluation of its entire system to identify obsolete land and facilities. One of the properties declared obsolete is 2.26 acres of undeveloped land located at 628 Jean Lafitte Avenue in the Lafitte Hills Subdivision near Highland Road Community Park. The Lafitte Hills property was donated to BREC in 1991 but was never developed into a neighborhood park due to lack of interest from nearby residents. Proceeds from the sale will be used to enhance the park system at the site of the original donor's choosing.

LANIER DRIVE PARK

Lanier Drive Park received site improvements in 2015 consisting of parking improvements with an addition of ADA parking. A new accessible concrete walk installed to connect to the court that was converted from a tennis court to a basketball court.

PROJECT DATE

- 2015: Site Improvements



LEBRENT AVENUE PARK

Lebrent Avenue Park is in Brentwood Place subdivision off Plank Road in Baker. New site improvements include constructing an all new picnic pavilion, site furnishings and additional walks were installed to improve connectivity within the site. The existing sand playground surface was replaced with a engineered wood fiber safety surface and various play equipment replaced as needed.

PROJECT DATE

- 2017: New Playground + Site Improvements



LEEWARD DRIVE PARK

Leeward Neighborhood Park is in the University Acres Subdivision near Highland Road. Park improvements include a new playground for ages 2-12, a new walking path making the park accessible, and a new picnic shelter. Thanks to the University Acres Civic Association, the University Acres residents, and friends of the park for their contribution toward the safety surface improvements, the playground received synthetic playground grass by Forever Lawn.

PROJECT DATE

- 2009: New Playground + Site Improvements



LEO AND MURLIN WILLIE PARK

The neighborhood park is in southeast Baton Rouge at the corner of Stumberg Lane and Country Manor Avenue. The site was developed in 2014 consisting of a new pathway that winds through the naturally wooded site. Fitness stations are located along the pathway for area residents to stretch and strengthen and keep fit close to home.

PROJECT DATE

- 2015: Site Development



LIGON ROAD PARK

Ligon Road Park is in the Zachary area. Site improvements completed in 2012 include renovating the multi-use court into a full basketball court, the ball field was fully renovated, the picnic tables and benches received new wood boards. The restroom was freshly painted, and the picnic pavilion refurbished.

PROJECT DATE

- 2012: Site Improvements



LITTLE FARMS PARK

The neighborhood park is located in Zachary between Main Street and Lower Zachary Road. Site Improvements were completed in 2021 consisting of a new ball field backstop, accessible walks, new picnic pavilion and refurbished multi-use court. Then in 2023 a public meeting was held with area residents. Their feedback led to the installation of a new playground at the park.



PROJECT DATE

- 2021: Site Improvements
- 2022: Tree Survey (NRM)
- 2023: New Playground + Walking Loop

LONGRIDGE PARK

Longridge Park is located near South Sherwood Forest Boulevard and features a playground, tennis court, picnic shelter and basketball court. Improvements to the neighborhood park in 2009 include a new half basketball court with connecting walks, signage, and site drainage. Improvements were also made in 2013 to include some playground work, additional benches, and new signage.

PROJECT DATE

- 2009: Half Basketball Court
- 2013: Site Improvements

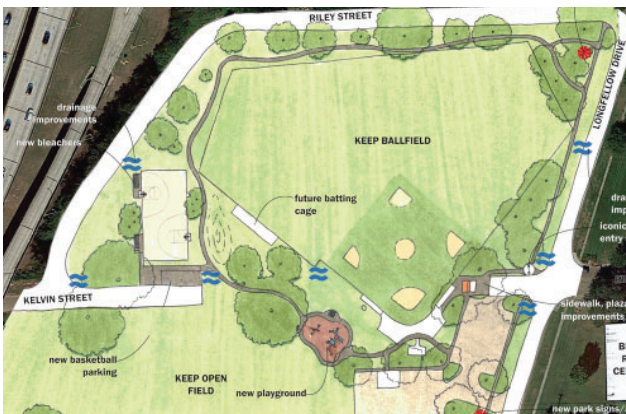
LONGFELLOW PARK

Longfellow Park is located near to Delmont Gardens Branch Library just west of Plank Road. The Park was identified for improvements in 2017. The planning phase began with stakeholder meetings and a public input survey. Site improvements were underway in 2018 consisting of a new playground, benches, and picnic tables. The basketball court improved, and new bleachers installed near the ballfield.

A lighting project supported by a grant from the AARP in partnership with The Center for Planning Excellence, BREC and the Department of Public Works was completed in 2019. The new lights were installed by BREC along the pedestrian loop trail to create a safer recreational area for residents and visitors to Longfellow Park.

PROJECT DATE

- 2017: Stakeholder Meetings held + Public Input Survey Conducted
- 2018: Site Improvements
- 2019: Lighting of the Oaks
- 2024: New LED Sports Lighting





LOVETT ROAD PARK

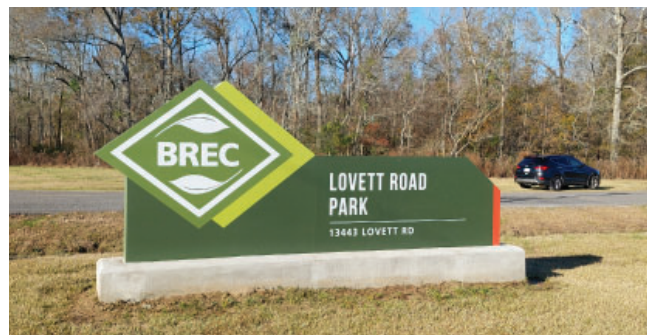
This neighborhood park offers many recreational opportunities to area residents, such as sport fields and tennis courts, a recreation center, playground and much more. The BREC Park has undergone many renovation projects over the past several years that include roadway restoration and new walking path. The playground received new play elements.

The recreation center underwent flood repair due to the great flood of 2016 plus an addition was constructed to expand the facility which now features a new welcoming entry pavilion, new multi-purpose rooms with kitchenette, additional storage space, and new restrooms. A new heat & air conditioning system was installed in all rooms plus the gymnasium.

The sixth dog park in the BREC system is now open at Lovett Road Park in Central. The brand-new dog park has separate spaces for large and small dogs, with each providing a concrete walking loop so owners can exercise as well. Inside each loop is surfacing with decomposed granite which is designed to withstand heavy usage by dogs. Both small and large dog areas have covered pavilions with bench seating underneath. Additionally, the park includes a fenced dog wash area near the entry/exit plaza.

PROJECT DATE

- 2015: Asphalt Roadway Restoration + Walking Path Phase 1
- 2020: Recreation Center Addition, Renovation And Floor Repair
- 2020: New Playground Elements
- 2021: New Dog Park
- 2021: New Soccer Field Lighting



MADISON AVENUE PARK

Madison Avenue Park is in north Baton Rouge near Scenic Highway. The neighborhood park had minor improvements in 2013 consisting of improved entry into park, the picnic pavilion and basketball court were refurbished.

Additional site improvements were delayed due to the pandemic and is now back on track. A public input survey was conducted to aide in the planning the neighborhood park.

Enhancements to the site includes new ADA accessible pathways connecting site amenities, a new playground area, refurbish sport court and new site furnishings.

PROJECT DATE

- 2013: Site Improvements
- 2022: Topographic Survey Complete
- 2023: Online Public Input Survey
- 2023: Planning + Design
- 2024: Site Improvements



MAPLEWOOD DRIVE PARK

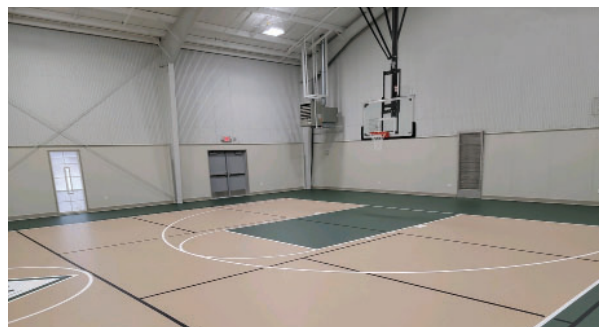
Maplewood Drive Park is located in the Glen Oaks area. The 11-acre neighborhood park includes a ball field, tennis courts and basketball court. As with much of the area, the recreation center took on water in the great flood. The center underwent flood repair and is now restored with new flooring and paint throughout. The restrooms were completely remodeled, and a new heat and air conditioning system installed. To improve accessibility, the entrance to the recreation center was relocated. An entry tower now marks the new entrance, and a new covered walkway leads to the entrance.

Another exciting project was made possible in part by Capital Outlay funding for new outdoor play features with shade structures. A public meeting and an online public input survey were held to invite citizens to share their thoughts on possible new play features at their park.

Enhancements include a new playground and adult outdoor fitness equipment each with new shade system structures for sun protection. The playground has engineered wood fiber safety surfacing, new site furnishings, site drainage, drinking fountain with bottle filler, accessible connector walks and shade tree plantings.

PROJECT DATE

- 2020: Public Meeting + Online Public Input Survey Conducted
- 2021: Recreation Center Flood Repair
- 2022: New Playground + Shade Sails



MARY J. LANDS PARK

Mary J. Lands Park, formerly known as Progress Park, is in the Eden Park area near North Street. The neighborhood park features a ball field, basketball court, playground, and picnic areas. The existing shelter was transformed in 2020 into a state-of-the-art facility. The Pavilion Renovation design consisted of a pitched roof with exposed wood beams and wood siding one might find in a State Park.

The expanded picnic area features an outdoor sink, drinking fountain, accessible picnic tables and new outdoor barbecue grills. Other site improvements include a new 1/4-mile walking loop, improved basketball court and new site furnishings.

PROJECT DATE

- 2020: Pavilion Renovation
- 2021: New Walking Loop



MARY RUTH PARK

Mary Ruth Park is a small undeveloped site along Staring Lane. In 2010 portion of the park was sold to the City of Baton Rouge/ Parish of East Baton Rouge as part of the Green Light Plan Staring lane Roadway Improvements.

MAYFAIR PARK

Site improvements include a 1/4-mile paved walking circuit that meanders through the park's open space. State-of-the-art outdoor fitness equipment installed near the playground where a new arch swing was added. The picnic pavilion was renovated, and new site furnishings installed. An outreach with the local Crime Prevention and Improvement District group led to BREC installing additional security lighting along the pathway.

Enhancements such as these have been known to reactivate a park drawing people of all ages to gather and exercise. A well-used park with people doing positive activities attracts more people and helps create a safer community.

PROJECT DATE

- 2018: Meeting With Community Stakeholders
- 2019: Site Improvements
- 2021: LSU Wildlife Study (NRM)



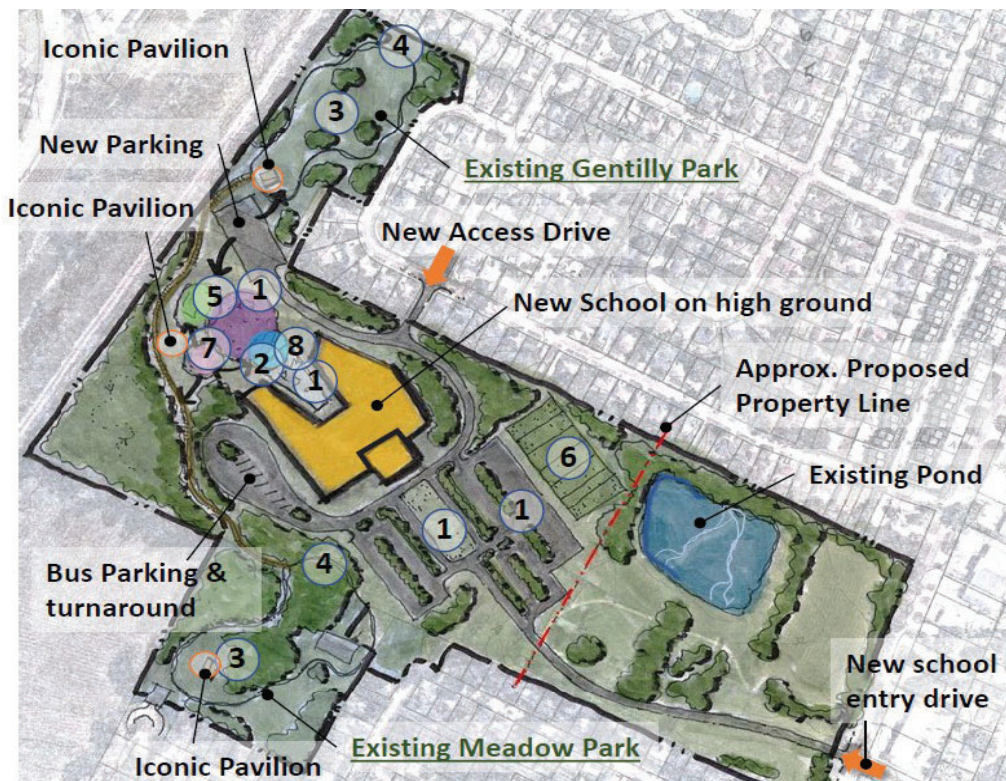
BREC MAYFAIR NEIGHBORHOOD PARK
SITE IMPROVEMENTS
Imagine the Possibilities 2018

MEADOW PARK

The neighborhood park is located in a subdivision off of Perkins Road near Siegen Lane. Site Improvements include a new walking path that connects features throughout the site. The tennis court and half basketball court were refurbished, and new benches and picnic tables installed.

PROJECT DATE

- 2015: Site Improvements
- 2022: LSU Wildlife Study (NRM)
- 2022: School in the Park Planning



MILFORD WAMPOLD MEMORIAL PARK

Milford Wampold Memorial Park, formerly known as Stanford Avenue Park and Baton Rouge Beach, is a cooperative endeavor between LSU, Department of Public Works, and Wampold Companies. Phase One Improvements include a new asphalt parking lot, reconfigured to provide more green space in the park, a new pedestrian bridge, and a new exercise station. All amenities are ADA compliant including new sidewalks, benches, and a new water fountain.

Located at 901 Stanford Avenue, Milford Wampold Memorial Park is integrated in the Lakes Master Plan. The site is a favorite among many joggers and walkers in our community due to the proximity to the Lakes system. Design components may consist of expanding the beach to include more usable space for varied waterfront experiences, such as lake overlooks, a community pavilion to accommodate group gatherings and natural wetland zones.



PROJECT DATE

- 2008: Phase 1 Site Improvements
- 2015: Public Recycling Bins Installed - Dr Pepper Snapple Grant
- 2016: Lakes Master Plan



Legend

- 1 Public Beach and Deck
- 2 Event Lawn & Pavilion
- 3 Nature Play & Tree houses
- 4 Rowing Starting Point & Boat House
- 5 Cooperation Canal Expansion
- 6 Boardwalk & Wetland near Stormwater Outfall
- 7 Lake Overlook
- 8 Multi-purpose Path along Lake Live Edge
- Existing Shoreline

MILLS AVENUE PARK

Mills Avenue Park is north of Southern University featuring a recreation center, playground and ball field. In 2017 BREC met with community stakeholders to discuss their needs and concerns at the recreational site. The information gathered aided in the planning of site improvements.

In 2019 site improvements were completed consisting of new play units, swings and installation of engineered wood fiber safety surface to replace the sand playground. The ADA parking spaces were striped and new signage installed. The basketball courts were refurbished, new site furnishings installed, existing picnic pavilion freshly painted, and shade trees planted. The addition of a walking loop around the perimeter of the park allows the community to exercise in a safe environment.

Thanks to The Langston Galloway Foundation BREC's Mills Avenue Park has a fully restored basketball court for area youth.



PROJECT DATE

- 2017: Community Stakeholder Meeting Held
- 2019: Site Improvements
- 2024: Basketball Court Restoration



MILTON WOMACK PARK

Milton Womack Park is approximately 20 acres that fronts Florida Boulevard and North Ardenwood Drive. The site primarily houses the BREC Administration building and headquarters. Six acres behind the building have been utilized to house two multi-purpose fields for practice of various sports such as football, soccer, and lacrosse.

The fields feature 'Celebration' Bermuda sports turf and turf irrigation, and a new restroom facility. Service area improvements consisted of asphalt parking lot construction and restoration, new lighting, and automated gates with remote access system.

Space planning is underway for the BREC Administration building.

PROJECT DATE

- 2018: Multi-use Fields + Service Area Improvements
- 2021-2024: Space Planning + Construction

