

# MONTE SANO PARK

Monte Sano Park improvements in the first Imagine Your Parks strategic plan include a new playground with safety surfacing, new connecting sidewalks, new signage new benches, new basketball goals, a refurbished ball field and site drainage. The recreation center was completely remodeled. New exterior doors installed, the restrooms remodeled, and the center interior and exterior painted.



## PROJECT DATE

- 2012: Recreation Center Improvements
- 2013: Site Improvements + New Playground
- 2022: Monte Sano Bayou Volunteer Cleanup
- 2023: Litter Boom Planning (NRM)



# MYRTLE STREET PARK

Myrtle Street Park is in the City of Baker off Lavey Lane. The neighborhood park features a ball field, restroom, and playground. Site improvements in 2015 consisted of new connector walk to the existing picnic area and to the new playground with a perimeter walk and bench seating.



## PROJECT DATE

- 2015: Site Improvements



# NAIRN DRIVE PARK

Nairn Park is situated along interstate 10 and located on Nairn Drive near Valley Park was updated with additional parking lot lighting and improved limestone parking area. New accessible walks connect the city sidewalk to existing pathways in the park and Crape Myrtles were planted.

## PROJECT DATE

- 2019: Parking Lot Lights + Site Improvements





# NORTH 14TH STREET PARK

This Park is located in the downtown Baton Rouge area between North Boulevard and Florida Street. It contains a recreation facility that received updates in 2015 which included abatement and demolition of a small structure on site. In 2020, improvements were focused on the exterior to meet accessibility codes as well as restoration of storefront windows and entry to the building. Improved safety features include new exterior security lighting, perimeter ornamental fencing with access gates and existing basketball court received new basketball goals.

## PROJECT DATE

- 2015: Storage Building Abatement + Demolition
- 2020: Site Improvements



# NORTH 18TH ST PARK

Renovations to North 18th Street Park were completed in 2014. Park improvements include new playground equipment, improved site drainage, fencing, new connecting walks, new drinking fountain, benches and picnic tables, and refurbished basketball court.

## PROJECT DATE

- 2014: Site Improvements



# NORTH BOULEVARD PARK

North Boulevard Park is a small urban site located in the Baton Rouge Mid-City area. The Park features shade trees lining the site, a shelter with picnic tables, and a half basketball court.



# NORTH STREET PARK

Renovations to North Street Neighborhood Park include a playground with walks, a renovated ball field and parking lot improvements. The Park also received new perimeter security lighting treatments and clearing of sight lines for park security patrols. In 2009 improvements to the Recreation Center were completed.

## PROJECT DATE

- 2006: New Playground + Site Improvements
- 2009: Recreation Center Improvements
- 2022 Tree Survey (NRM)



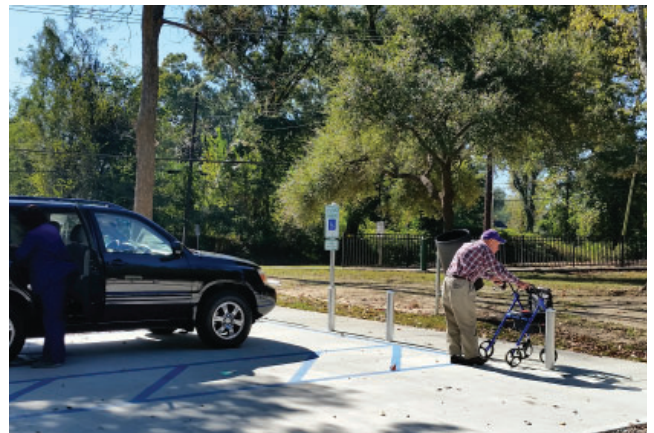


# OLD HAMMOND HIGHWAY PARK

Site Improvements to the park include parking lot enhancements with ADA accessible parking and new connector walks to the playground. The new playground location was relocated to be further from the roadway to enhance children’s safety and tucked within the shade trees. The new playground equipment features swings, various climbers that present children with different levels of challenge and three slides for all to enjoy. The tennis court was refurbished and a new drinking fountain with pet bowl installed along the existing walking trail that winds through the park.

## PROJECT DATE

- 2016: New Playground + Site Improvements





# PALOMINO DRIVE PARK

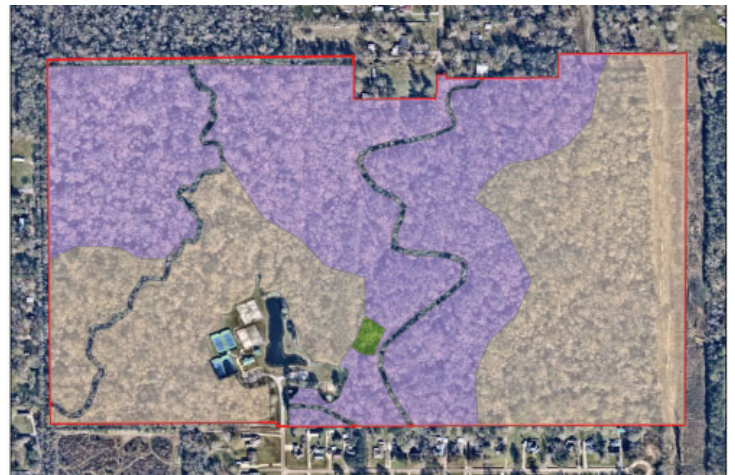
Palomino Park is going through a master planning process for park renovations. An initial online public input was conducted to gain insight to the community wishes and needs for their neighborhood park. There were 140 participants who took part in the survey. The top four park elements were a new playground, improved picnic areas, improved pond access and new accessible walks. The information gathered help guide the conceptual master plan for re-imagining the park and another online public input survey was conducted in 2021. Palomino Park is unique in that it is a roughly 150 acres and a majority of the park is undeveloped forested wetlands. The site has been the focus of multiple surveys due to the unique and rare habitats present such as small stream forest and spruce pine hardwood flatwoods.

In 2019 a survey conducted by LDWF herpetologists found a rare and imperiled four-toed salamander in the park, one of the only locations on record in the parish of which there are few statewide. In 2022 the park was surveyed by Natural Resource Management staff and a Biodiversity Assessment Report was written providing an overview of the ecological conditions in the park which are considered high. Due to the amount of water this park holds in the existing forested wetlands, the natural capital value of this park is also high making it a valuable asset in the BREC system. Rare habitats and salamander breeding zones in the park have been designated as sensitive habitat zones that must be protected moving forward. Future trails will most likely be included in the park's redesign which will most likely need to be elevated.



## PROJECT DATE

- 2018: Public Input Survey Conducted
- 2021: Design Phase + Public Input Survey Conducted
- 2019 Transitioned to CORE Nature Field Station (NRM)
- 2019 LDWF rare species survey (NRM)
- 2022 Biodiversity Assessment Report (NRM)
- 2022 LDWF Rare Species Survey (NRM)
- 2024: New Playground Design Underway





# PARKLAWN PARK

Parklawn Park is in southeast Baton Rouge tucked away in Parkview Oaks subdivision. The neighborhood park received site improvements in 2014 which features a new playground with connector walks, refurbished ball field backstop, new drinking fountain with dog bowl, improved parking area and refurbished multi-use courts. The recreation center received minor improvements.

Beginning in 2022 planning for site improvements was underway. A public input survey was performed to inform area residents of coming improvements and give patrons a chance to share their thoughts on how they envision their park.

Information gathered guided the design for site improvements. New features include refurbishing the multi-use courts to accommodate basketball, tennis, and the very popular pickleball. A new picnic pavilion was located near the playground for family gatherings, and ADA accessible walking path now meanders through the park.

## PROJECT DATE

- 2014: New Playground + Site Improvements
- 2022: Public Input Survey Conducted
- 2023: Planning + Design
- 2024: Site Improvements



# PARKVIEW PARK

Parkview Park is in the Broadmoor area near Airline Highway. The neighborhood park features a large picnic pavilion, ball field, lighted tennis courts and a walking loop for area residents to exercise safely. In 2016 the playground received a new play unit and engineered wood fiber safety surface.

In 2022 due to proximity to a school, enhancements to natural resources in the park will be developed. A section of the park that was previously overgrown has been cleared and planted through the LSU Coastal Roots program by the neighboring school. This area is now a designated forest restoration area and will be managed for invasive species. Future supplemental native plantings are planned.

## PROJECT DATE

- 2016: Renovated Playground
- 2022: Park improvements Planning (NRM)
- 2023: Coastal Roots Planting (NRM)



# PAWNEE STREET PARK

Pawnee Street Park is located in north Baton Rouge adjacent to Scenic Highway. It features a full outdoor basketball court, drinking fountain, picnic area and open play space. In 2015 additional shade trees were planting in the park.

## PROJECT DATE

- 2015: Tree Planting

# PINEHURST PARK

This woodland park is tucked away in the Briar Place subdivision. Previous site improvements were completed in 2015 featuring a new picnic area, limestone walking loop, and ADA parking.

In 2024 planning is underway for site improvements that will include a new playground, accessible walks and new site furnishings.

## PROJECT DATE

- 2015: Site Improvements
- 2024: Public Engagement Conducted
- 2024: Design + Construction Underway





# PLANK ROAD PARK

Plank Road Park is an 82-acre recreational site that stretches from Plank Road to the Comite River. The Park features a recreation center with indoor basketball, lighted ball fields and playground. It underwent a master planning process for park improvements. Citizens were encouraged to share their vision of the park. Those ideas were incorporated in the redevelopment of the park.

Site improvements include addition of concrete path extending to archery range, a new volleyball court, site furnishings, expanded parking area with ADA parking and restroom facilities. There are now two separate play areas and a picnic pavilion, landscape berms and shade trees planted throughout.

## PROJECT DATE

- 2015: Site Improvements
- 2016: New Archery Range



# PRIDE PARK

Pride Park fronts Port Hudson-Pride Road in northeast portion of the Parish. The park features a playground and picnic areas beneath the trees. For sports play there is a basketball court and a lighted ball field.

In 2024, to help guide the design for site improvements at the neighborhood park, public outreach engagements were conducted. The Pride Park community was encouraged to share their thoughts on how they envision park. Information is guiding the planning and design for site improvements that aim to sustain community needs for years to come.

## PROJECT DATE

- 2014: Site Improvements
- 2024: Public Community Engagements + Planning and Design



# RAILEY ROSHTO PARK

The neighborhood park is located within Cedar Mill Run subdivision in the City of Central. Site improvements to Railey Roshto Park were based on the responses from an online public survey. The improvements include a new playground, improved picnic area, site drainage and new connector walks to amenities in the park.

## PROJECT DATE

- 2018: Online Public Survey Conducted
- 2019: Site Improvements





# REAMES ROAD PARK

Reames Road Park is in the northeast region of the parish and features a recreation center and multi-purpose ball field. In 2014 site improvements were complete consisting of a new playground area with picnic tables and benches, refurbished multi-use and ball field backstop, addition of ADA parking and new paths connect amenities in the park.

In 2022 additional work was completed at the recreation site that included a new pavilion constructed near the play area and additional access walks.

## PROJECT DATE

- 2014: Site Improvements
- 2022: New Pavilion + Walks





## RED OAKS PARK

Red Oaks Park is in Red Oaks area near North Sherwood Forest Boulevard. Improvements in IYP1 include a playground with accessible walks, sand volleyball court, a renovated tennis court and refurbished ball field with lighting. The recreation center also received improvements.

### PROJECT DATE

- 2012: Site Improvements



## RIO DRIVE PARK

Rio Drive Park is located next to Merrydale Elementary in Holiday Hills subdivision. Improvements include a new playground with safety surface, perimeter pathway and new benches located near the parking lot, improved drainage, new accessible parking and connecting pathway.

### PROJECT DATE

- 2012: Site Improvements



# RITA STREET PARK

Located in the City of Zachary this neighborhood park features one lighted multi-purpose ball field and another unlighted, a soccer field and tennis court. In 2021 site improvements consisting of a new playground area with picnic tables and benches. Addition of ADA parking and connector concrete paths.

Another addition to the park was the installation of a prefabricated restroom that is ADA compliant. It replaces an older non compliant restroom structure.

## PROJECT DATE

- 2021: Site Improvements
- 2022: New Prefabricated Restroom





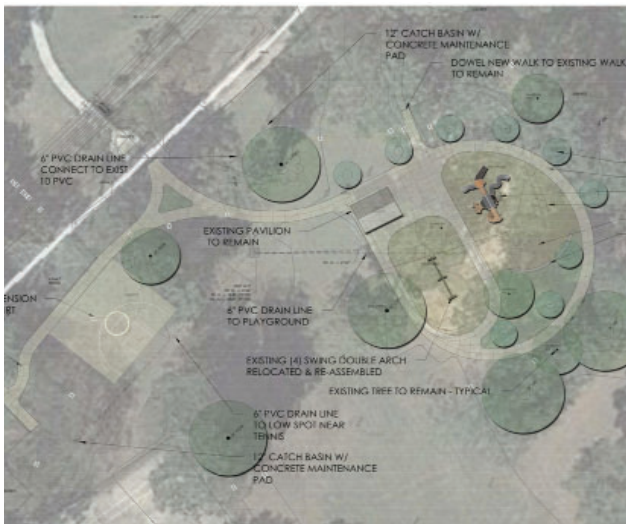
# RIVERBEND PARK

A fundraising campaign was kicked off by area residents who wished to partner with BREC to renovate Riverbend Park. Area residents were invited to attend an open house and share their vision of what amenities they would like to see at the park. The capital campaign concluded in 2017.

Construction plans were developed, and the park was fully renovated with such features as a new playground, walking loop, renovated pavilion, new benches and drinking fountain. The existing tennis court was renovated, and new half basketball court installed. A grand re-opening celebration was held September 2018 to dedicate the completed renovations of Riverbend Park.

## PROJECT DATE

- 2014: Public Input Survey Conducted
- 2017: Capital Campaign Concluded
- 2018: Site Improvements





## ROLLINS ROAD PARK

Rollins Road Park is located in Zachary. The neighborhood park features a playground and an Airnasium that provides protection from the elements while playing on the basketball court. The existing restroom facility was renovated to meet ADA standards. The interior was completely remodeled with new toilets, sinks, exhaust fans, and new light fixtures were installed.



### PROJECT DATE

- 2021: Restroom Renovation



## ROOSEVELT STREET PARK

The neighborhood park is north of LSU between Nicholson Drive and River Road. Roosevelt Street Park provides a multi-use ball field, a picnic area and court for area residents to gather and enjoy the outdoors. Renovations include improved pedestrian pathways, a new playground, signage, and refurbished basketball court.

### PROJECT DATE

- 2013: Site Improvements



# RUE LEBOUF PARK

In 2019 the park was identified for improvements. An online public input survey was conducted and information from the survey aided BREC in designing a park to meet the needs and wishes of the community.

Site improvements include converting part of the existing play area into a berm land form with benches and a new playground installed featuring a play unit and swings for children 2-12. The existing sand playground surface was replaced with new engineered wood fiber. The existing picnic shelter was renovated and a new ADA drinking fountain installed along with new site furnishings. Improvements were made to the existing ADA parking and addition of accessible connector walks installed.

## PROJECT DATE

- 2019: Online Public Input Survey Conducted
- 2020: Site Improvements





# SAMUEL D'AGOSTINO PARK

Samuel D'Agostino Park is located in a neighborhood near Joor Road and Mickens Road. In 2018 a new playground was installed and the existing sand playground surface was replaced with engineered wood fiber safety surfacing.

New accessible walks were constructed to link the new play area to the existing basketball court and picnic pavilion. Also, new site furnishings installed throughout the recreational site.

## PROJECT DATE

- 2018: New Playground





# SANTA MARIA PARK

Santa Maria Park is located near Santa Maria Golf Course in southeast Baton Rouge. A fundraising campaign was kicked off by Santa Maria Homeowners Association who wished to partner with BREC to develop an enhanced neighborhood playground. Area residents shared their vision of what amenities they would like to see at the park and a capital campaign through the BREC Foundation was conducted.

The new playground space comprises accessible concrete walks, improved site drainage, enhanced playground equipment, engineered wood fiber safety surfacing, and site furnishings. An area to the north of the playground was sown with native plants to create a naturalized landscape buffer zone.

*(See Special Use – Golf Course – Santa Maria Golf Course)*

## PROJECT DATE

- 2017: New Playground





CONTEXT  
PROJECT EXECUTIVE SUMMARY

**CELEBRATING THE RICH CULTURAL HERITAGE OF SCOTLANDVILLE WHILE ENCOURAGING THE NEXT GENERATION OF DREAMERS**

The Scotlandville Parkway is 3-mile linear park with 134 acres of parkland. It is located within the Interstate 110 right-of way, running from Scenic Hwy at the north, to Airline Hwy at the south. Built the late 1970s, the goal of the parkway was to minimize the interstate's impact on the surrounding community and to provide recreational opportunities such as walking and biking. In 1980, it was designated a National Recreation Trail. The parkway currently has over 8 miles of trails and other recreational amenities, including basketball, tennis, and disc golf.



Figure 1.1 - Overall Master Plan for Scotlandville Parkway

6

BREC SCOTLANDVILLE PARKWAY MASTER PLAN





# SCOTLANDVILLE PARKWAY

The Scotlandville Parkway is part of the 110 interstate system, which the Louisiana Department of Transportation and Development has leased to BREC for use as a park. The 109 acres features multiple pathways, picnic areas, ball fields and basketball courts.

In 2015 a new Disc Golf Course was envisioned with the assistance of local Disc Golf enthusiasts. The 18-hole course begins at Monte Sano Avenue. It is the third Disc Golf Course in the BREC system. The unique natural rolling topography along Bayou Monte Sano creates a challenging course for golfers as they play in the shade of mature trees.

Another addition to the park was the installation of a new playground located at the end of 69th Avenue along the Scotlandville Parkway.

## PROJECT DATE

- 2016: New Disc Golf Course
- 2016: New Playground At 69th Ave
- 2022: New Park Map, Rules Signage, Benches + Artwork Installed
- 2022: Community Engagement Throughout The Year
- 2022: Park Master Plan Completed
- 2022 LSU Wildlife Survey
- 2022 Waterway Cleanup by Volunteers
- 2024: Pedestrian Bridge Improvements



## ALSO AT SCOTLANDVILLE PARKWAY

### SCOTLANDVILLE GREENWAY

See Section: BREC Greenways + Blueways

# SEVENTH STREET PARK

Seventh Street Park is adjacent to the Catholic Presbyterian Apartments retirement facility located on the edge of the Spanish Town Historic District and adjacent to the downtown Central Business District. The Park provides recreational and social activities for citizens, primarily living in Spanish Town centered around community gardening for the citizens in the area.



# SHARP ROAD PARK

This neighborhood park is located between Goodwood Boulevard and Florida Boulevard. It has ball fields, a recreation center, tennis courts, a playground area, a multi-use court and picnic facilities. In 2015 the parking lot was restored with an asphalt overlay & striping.



## PROJECT DATE

- 2015: Parking Lot Asphalt Overlay + Striping





## SOUTH MAGNOLIA PARK

The neighborhood park is in the western part of Baker that features a ball field, playground, picnic area and tennis courts. Improvements to South Magnolia Park include a new playground with safety surfacing, new benches, improved site drainage and new ADA accessible parking with connecting sidewalks.

### PROJECT DATE

- 2012: Site Improvements

## SPAIN STREET PARK

Spain Street Park is located in the heart of Mid-City. In 2017 the park was identified for improvements. BREC partnered with Mid City Studios Coffee on the Porch gatherings to connect with area residents. Information gathered from the meetings aided BREC in designing a park to meet the needs of the community. Site improvements consisted of refurbishing the half basketball court, installing a new centrally located picnic pavilion and adding accessible walks to connect all the amenities.

### PROJECT DATE

- 2017: Public Input Meeting 1 + 2
- 2018: Site Improvements

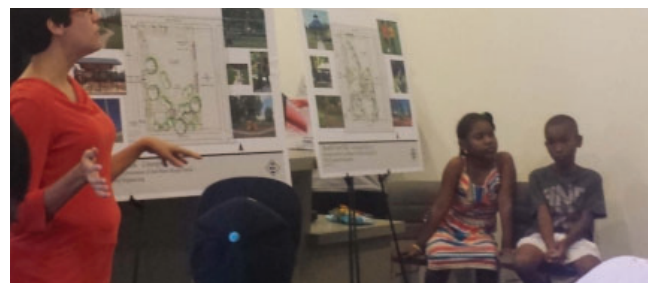
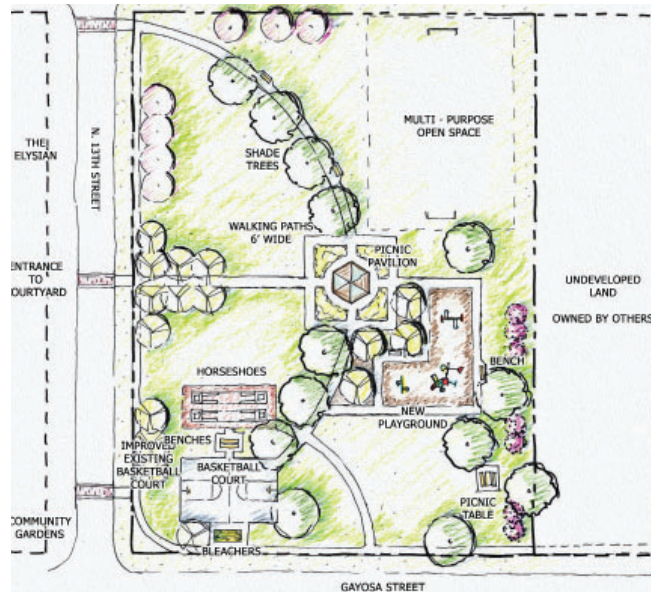


# SPANISH TOWN PARK

In 2014 Spanish Town Park was identified for site improvements. BREC Planning staff met with community stakeholders at The Elysian Apartments, which is located across the street from the park. BREC listened as residents expressed their needs and wishes for their park. The information gathered aided in the planning of site improvements at Spanish Town Park. Included in the project was a centrally located plaza featuring a picnic pavilion with seating and grill. Connector walks provides access to features such as the new playground area, the refurbished basketball court with new covered benches, and the new entry paving along the roadway provides a warm welcome to park users in the Spanish Town area.

## PROJECT DATE

- 2014: Stakeholder Meeting at the Elysian Apartments
- 2015: Site Improvements





## SPORTS ACADEMY

Located in downtown Baton Rouge, the Sports Academy provides a place for athletes to improve their physical conditioning and practice basketball skills. In 2015 Roof Project was underway to re-roof the Sports Academy facility.



### PROJECT DATE

- 2015: Roof Project



## SUGARLAND PARK

Sugarland Park was renovated in 2014. Improvements were financed in part by Capital Outlay funding which included a new playground, a 5-foot-wide concrete walking circuit, 5 outdoor fitness stations, parking improvements, new site furnishings, and landscape improvements.

### PROJECT DATE

- 2014: Phase 1 Site Improvements



# T.D. BICKHAM, JR. PARK

T.D. Bickham, Jr Park is located near the intersection of Plank and Pettit Rd in Baker. It is a large tract of land consisting of 202 acres, of which, only 3 acres are developed into a neighborhood park featuring a recreation center, playground, and open recreation space. The remainder of the site is undeveloped bottomland hardwood forest mixed habitat accompanied by White Bayou traversing through the park.

In 2016, a new playground was constructed with new accessible walks, new site furnishings and refurbished picnic pavilion located near the playground.



## PROJECT DATE

- 2015: Natural Resource Survey + Boundary marking
- 2016: New Playground + Site Improvements





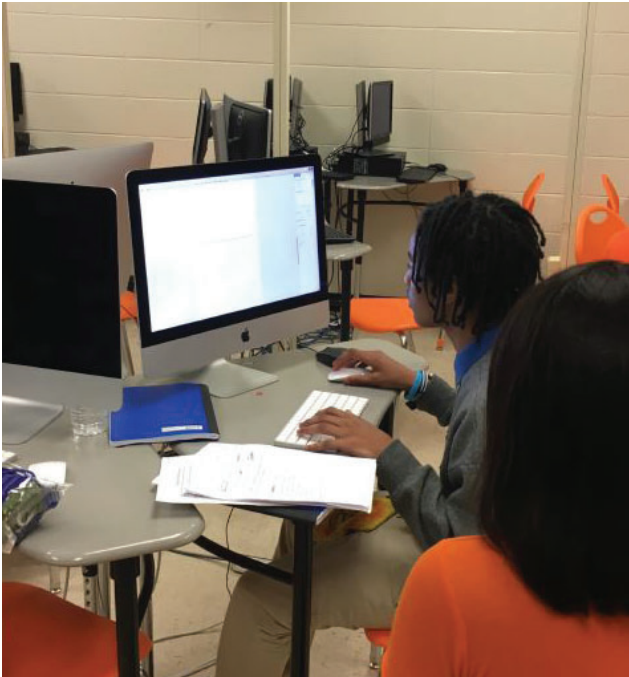
# TAMS DRIVE PARK

In 2015 the park was identified for improvements. A new playground was installed, and the existing sand playground surface was replaced with engineered wood fiber safety surfacing. A picnic pavilion was positioned near the new playground and new picnic tables and benches were installed.

BREC conducted park planning with Belaire High School magnet students as part of Belaire’s Creative Sciences and Arts magnet program. Students engaged the community about their needs and thoughts for Tams Park, which is located in the Belaire community. The information gathered was compiled and improvements were recommended by the students to BREC.

## PROJECT DATE

- 2015: New Playground, EWF+ Pavilion
- 2019: Conducted Park Planing with Belaire High School Magnet Students



# TERRACE STREET PARK

BREC and Front Yard Bikes (FYB) entered into a cooperative endeavor agreement in 2010 where FYB manages Terrace Street Park on a nonprofit basis by providing quality youth and family oriented recreational opportunities and implement bicycle and trail-oriented programs for the citizens of EBRP.

Front Yard Bikes is a community bike shop that focuses on teaching participants of all ages how to fix and maintain bikes. They teach and develop skills in math, physics, and mechanics, while promoting inclusivity, mentorship, recreation, and academic achievement. FYB offer youth in the community a safe, free after-school program.

## PROJECT DATE

- 2015: BREC CEA Approval With Front Yard Bikes





## THIRTY-NINTH STREET PARK

Thirty-Ninth Street Park is in the Zachary area and features a ball field, two tennis courts, and restrooms. In 2012 a new playground was installed with perimeter walk and new wood fiber safety surfacing. The tennis courts were refurbished, and a push button timer install for nighttime use. ADA parking was installed with connecting walks to the ball field and restroom.

### PROJECT DATE

- 2012: Site Improvements



## THOMAS MAHER PARK

Thomas Maher Park is north of Greenwell Springs Road in the Lone Oak subdivision. There is a playground, a tennis court, picnic area and an open space for athletic activities. Site improvements include a new playground with double bay swings and a play unit, engineered wood fiber safety surfacing, site furnishings and new ADA parking with connector walk to playground.

### PROJECT DATE

- 2014: Site Improvements



# TICKIE SAIA MEMORIAL PARK

Saia Park located on N. Donmoor Avenue services a large apartment community. The neighborhood park features a recreation center and an Airnasium basketball court, lighted multi-purpose ball field and tennis court with a half basketball court.

In 2016 a new playground installed, and the existing sand playground surface was replaced with engineered wood fiber safety surface and new site furnishings installed. The restrooms at the Airnasium building were renovated to be ADA compliant.



## PROJECT DATE

- 2016: Saia Playground Installation
- 2020: Restroom Renovation
- 2022: New Entrance Sign



# TUSCARORA STREET PARK

The linear park is located within the Knox Canal subsurface drainage way in north Baton Rouge near Interstate 110 and Dayton Street. The Park has walking paths that provide safe pedestrian access in the Prosperity and Scott neighborhoods.

## PROJECT DATE

- 2013: Site Improvements



# WARREN O. WATSON FAMILY MEMORIAL PARK

Warren O. Watson Family Memorial Park was identified for site improvements in 2018. An online public input survey was conducted to help guide site enhancements. Site improvements include new playground equipment, engineered wood fiber safety surfacing, site furnishings and additional walking paths.

## PROJECT DATE

- 2018: Online Public Input Survey
- 2019: Site Improvements



# WEBB MEMORIAL PARK

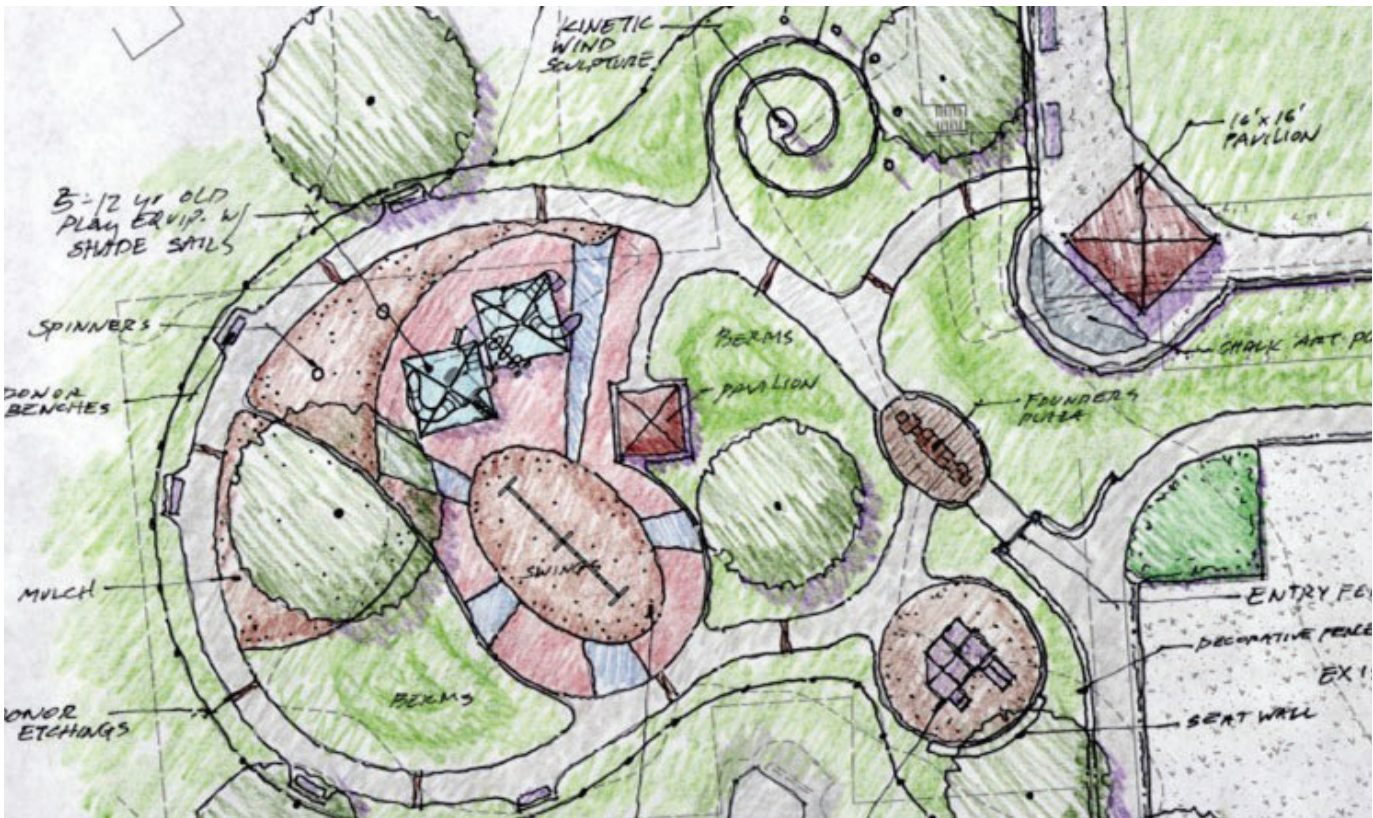
Webb Park underwent a master planning process for playground renovations. Two conceptual plans were developed. Both plans present new and improved park amenities including new walkways, a new playground with a picnic shelter and benches. Area residents played an active role during the planning process and joined forces with the BREC Foundation to raise funds to make the new play area an even better than imagined.

The pool area was redesigned into a multi-purpose lawn featuring a garden pergola with seating and that offers many recreational opportunities such as grass volleyball, badminton, and movies on the lawn. Enhanced features on the lawn include a kid's art plaza for chalk drawing and art plaza event pavilion. Other enhanced features are decorative rubber surfacing at the playground and a children's discovery/sensory garden.

*(See Special Use – Golf Course – Webb Memorial Golf Course)*

## PROJECT DATE

- 2012: Public Planning Meeting
- 2014: Neighborhood Park Renovations
- 2014: Fitness Center Roof Renovations







## WENONAH STREET PARK

Wenonah Street Park a small undeveloped green space with mature live oak trees shading the site that is located on the corner of Wenonah Street and Chippewa Street in north Baton Rouge.

The site was purchased by BREC in 1971. The corner lot has several mature live oaks on it, which provide shade for those waiting at the bus stop.



# WEST BROOKSTOWN DRIVE PARK

West Brookstown Drive Park is located near Prescott Road and Evangeline Street with access from both East and West Brookstown Drive. In 2018 neighborhood park improvements were completed consisting of a new playground with engineered wood fiber safety surfacing that replaced the existing sand playground surface. Addition of ADA parking with access walks were placed in each parking area. The site now features a sand volleyball court, additional picnic areas and new site furnishings.

## PROJECT DATE

- 2018: Site Improvements





# WOODLAWN ACRES AVENUE PARK

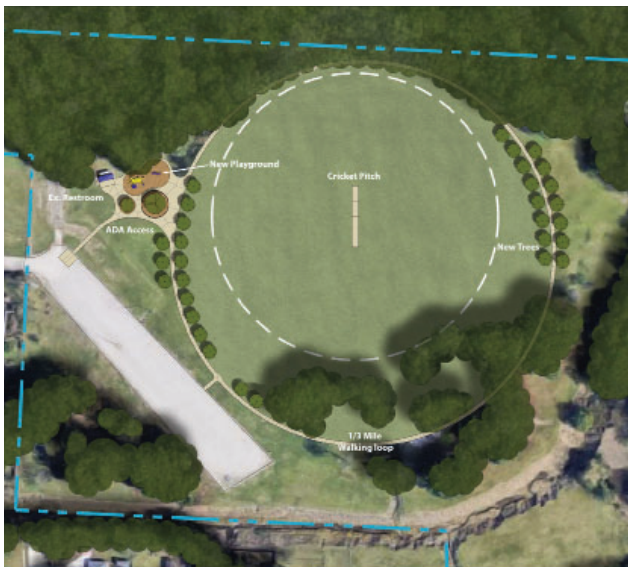
The updated Woodlawn Acres Avenue Park opened in 2020, transforming a typical neighborhood park into a park that features a circle-shaped, 3.2-acre cricket field. The field has an artificial turf pitch in the center of the field for the pitcher and batsman. Directly to the east of the field is a 50' x 15' practice cage for the cricket players. In keeping with more typical neighborhood park improvements, the park also has a new playground, pavilion, walks, seating, and newly planted trees.

The planning effort for the new cricket facility came about when the Baton Rouge Cricket Club approached BREC about designing an alternative cricket facility to the existing one at Airline Park. The Cricket Club contributed funding toward establishing the facility and now holds regular practices, matches, and tournaments there.

The project was primarily funded through IYP2 as well as contributions from the Baton Rouge Cricket Club.

## PROJECT DATE

- 2018: Public Input Survey Conducted
- 2020: Site Improvements with Cricket Course



# WOODLAWN WALKING TRAIL

BREC and the East Baton Rouge Parish School System entered a cooperative endeavor agreement in 2010 where the school system preserved a portion of land on the corner of Jones Creek Road and Tiger Bend Road for development as a park and recreation asset to the school and community. New amenities include a 1/4-mile exercise trail, a picnic shelter, picnic tables, benches, and an expansive open play area.

## PROJECT DATE

- 2010: Cooperative Endeavor Agreement
- 2011: Construction of new park completed





# YATASI DRIVE PARK

Yatasi Drive Park is 1.5 acres which makes it one of BREC's smaller neighborhood parks. It's located near Liberty Road in Indian Mound subdivision featuring a ball field, picnic shelter with tables and a playground. In 2015 shade trees were planted throughout the park.

## PROJECT DATE

- 2015: Tree Planting

