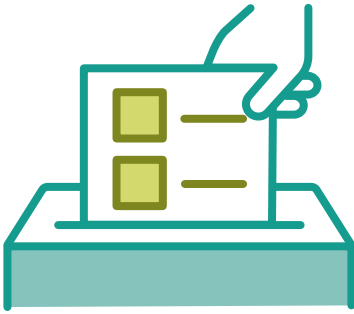




YOUR PARKS, OUR PURPOSE



BREC will have **2 VITAL TAX MILLAGES**
comprising **65% of BREC's CURRENT budget**
★ **ON THE NOV 5 BALLOT**

These millages are currently funding your Gold Medal Park System

★ **20-YEAR TAX 3.253 mills**

★ **10-YEAR TAX 6.2 mills**

NOT A NEW TAX!



IMAGINE YOUR PARKS (IYP) + IYP2

supported by the IYP tax millage (20-year tax)

TRANSFORMED BREC back into a

★ **GOLD MEDAL PARK SYSTEM**

ZACHARY COMMUNITY PARK



THEN



NOW

BREC'S BATON ROUGE ZOO



THEN



NOW

HOWELL COMMUNITY PARK



THEN



NOW



You Imagined Again!

BREC IS READY TO IMPLEMENT YOUR VISION

How will the tax funds be used? BREC will address community requests heard most often during the development of IYP3, including:



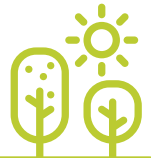
1 Desire for high quality facilities with regular improvements, especially in underinvested regions even if it results in fewer facilities overall

- 72% of residents were supportive of fewer, but higher quality recreation centers [Statistically Valid Survey]
- Most common improvement requests from residents: restrooms, aging facilities, and landscaping [Phase 1 Open-Ended Survey]



2 Desire for BREC facilities to be designed with heat relief considerations due to rising summer temperatures

- Residents resonated most with data showing 140 days over 90 degrees in 2023 [Public Meeting Input]
- Heat & weather was listed as one of the top reasons residents avoid visiting parks [Phase 1 Open Ended Survey]



3 Desire for increased connectivity for ability to walk, bike, and bus to parks more easily

- Paved connectivity trails for bikes/pedestrians was ranked as residents' second highest priority right behind neighborhood parks [Statistically Valid Survey]
- Residents and BREC staff expressed a desire for BREC and CATS to collaborate more on transportation [Public + Staff Meeting Input]



4 Desire for BREC to keep up with changing national and regional needs and trends

- When asked "What is missing or needs improvement in BREC programming?", top responses were: Cultural special events, Adult education, and Water fitness [Statistically Valid Survey]
- In survey comments and focus group discussions, a common recommendation was to increase the amount and diversity of programs through expanding partnerships with local organizations



5 Belief that BREC holds a vital role in conservation, education, and resilience

- 74% of residents said that it is "very important" for BREC to reduce the risk of flooding & improve water and air quality by protecting greenspace from future development [Statistically Valid Survey]
- Approximately half of survey respondents desire more passive nature recreation amenities



PUBLIC COMMENT

What is sustainable with the tax revenue BREC is asking from the public?

Removing under-utilized assets and repurposing the budget to better maintain and renovate remaining BREC locations

In response to what we learned, resource and investment decisions will be based on the five guiding principles:



Welcoming
Everyone

Connected
People

Connected
Environment

Connected
Places

Moving Forward
Sustainably